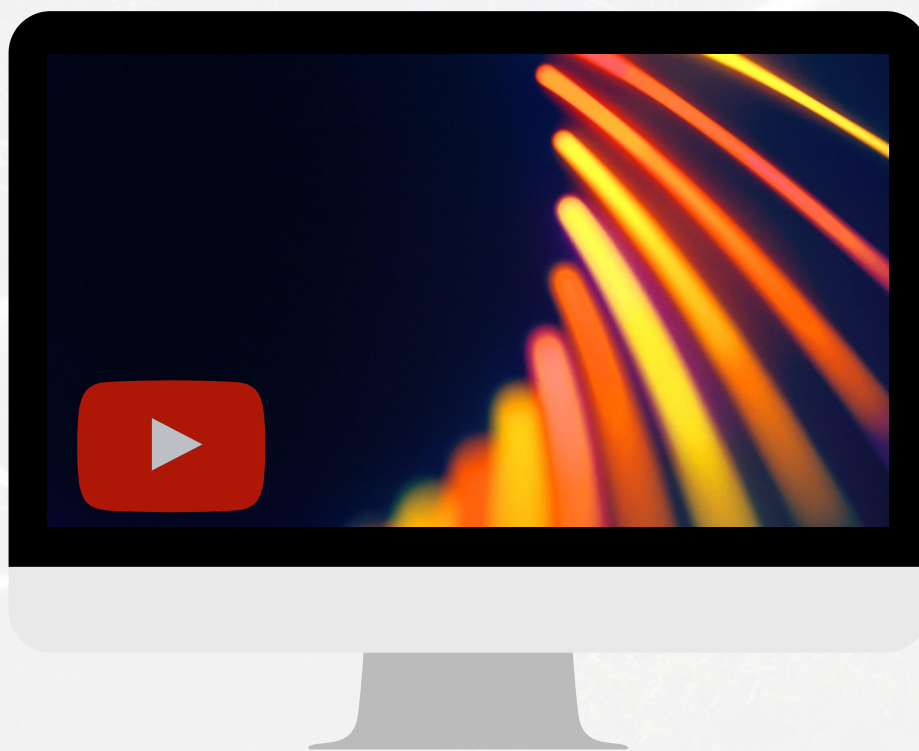




## REVISIT CASAMBI SUMMIT 2022



Casambi held a lively virtual conference last month highlighting the achievements, challenges, and future of smart technologies and lighting controls. Panelists ranged from our industry's top leaders to the heads of tech. Keynotes discussed topics such as sustainability, digital readiness of building spaces, and diverse case studies illuminating Casambi's many potential applications.

**Click the play button** to access the YouTube playlist of every innovative keynote presentation at the Casambi Summit 2022..

**Click Here for More About Casambi Summit 2022**



## WAREHOUSE LIGHTING CONTROL



Acuity Brands compiled an excellent list of lighting control best practices after years of providing design support and a keen eye to warehouse spaces. Among all the things to consider when implementing lighting controls in a warehouse, here are the biggest takeaways:

### **Be Mindful of Code Requirements**

- Full or partial auto-on via occupancy sensors
- Full or partial auto-off via occupancy sensors
- Daylight responsive controls via photocells
- Where occupancy sensor controls are not used, timeclock control and a manual override is required

### **No Need to Sacrifice Well-Lit Spaces for Energy Efficiency**

Building owners will be looking to for ways to save money while lighting large warehouse spaces, but this doesn't necessarily mean poor or unsafe lighting conditions for employees. The implementation of occupancy sensors combined with luminaire level lighting control (LLLC) can cut costs 14-28%, keeping everyone happy and safe!

### **Order Fixtures with Controls Included**

When ordering fixtures for a warehouse space, help the customer narrow down choices by gravitating toward fixtures that come with pre-programmed controls from the factory. The default settings are often what the end user is looking for, not to mention it will cut down work for the installer and get a functional system up and running sooner! Wireless and remote (cellular routers, cloud, VPN, etc) customizations are also options if and when settings adjustments are needed from the ground.

### **Provide Emergency via Generator Backup**

Since push-button testing of emergency batteries isn't always feasible with the height of most fixtures, generator backup is the go-to emergency solution in warehouse spaces. Power blip technology in most LLLC control systems can be provided instead of the additional wiring needed, cutting install costs. These solutions, in the event of a power blip, provide 90 minutes of full light output and shifts to generator power.

To read more about Acuity's other design and specification guidance in warehouses, **[click here to download the full document!](#)**





## BEGHELLI - EXPLODING THEIR LINE OF HAZARDOUS SOLUTIONS



Beghelli USA has consistently provided lighting options for hazardous locations, but recently expanded their line to include 17 total products. Fixtures range from **high and low bay luminaires, emergency and exit lights, and flood lights**. All are produced to function in heavy industrial sites where high temperatures and flammable vapors/dust are active, though confirm the needs for each application by class, division, and group classifications.

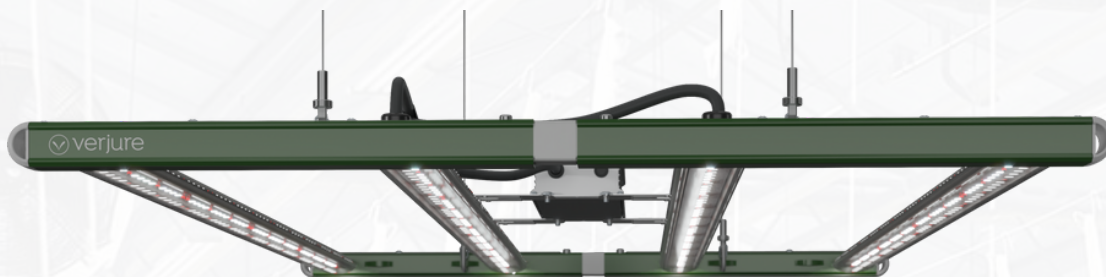
- **CASTEX Family** - CASTEX 150, 300, 310, 320, 400, 510, 600, and 700
  - High bay LED fixtures (700 is an exit sign)
  - Some offer Class 1, Division 1 classification, providing durable products for the most extreme conditions
  - Different mounting options available (surface, wall, and pendant)
  - All fixtures are in stock and ready to ship
- **ROBUSTO Family** - ROBUSTO UNIT, EXIT, and COMBO
  - Emergency, exit, and combo options available
  - Corrosion and vandal resistant
  - Surface mounts
- **HDZ Family** - HDZ, REMOTE, COMBO, and EXIT
  - Heavy-duty, Class 1, Division 1 hazardous location options available
  - Self-contained; maintenance free batteries
  - Can be specified with one head fixture, one exit sign, or both
- **BRAVADO HZ**
  - BRAVADO is suited for Class 1, Division 2 locations
  - Compact and low profile emergency light
- **PLURALUCE HZ**
  - Designed for areas where hazardous gas or dust is present
  - Fully gasketed, ideal for wet or dust-filled locations
  - Interchangeable optics

**HDZ COMBO****PLURALUCE®  
HAZARDOUS**





## ACUITY'S VERJURE PRO MAKES YOUR GARDEN GROW



Acuity Brands introduces the **Verjure Pro Series LED**, an answer for any customer seeking professional grade horticulture lighting. Acuity performed independent research with Utah State University to break through the buzz words from other manufacturers and provide real numbers to back up the efficiency of their grow lights.

Perfect for vegetable and flower growth alike, the Verjure series has a long list of incentivizing qualities: rotatable outer modules to ensure equal light distribution to the plants, easy to install remote-mount drivers, replaceable sections, and more. The series is available in 3 adaptable high bay sizes: from smallest to largest, greenhouse, medium output, and high output.

Does the customer have a unique space? The Verjure Pro series can be provided with suspended, rack, or pipe/strut mounting. They're also compatible with nLight AIR controls and the CLAIRITY+ Mobile app, capable of turning the fixtures on/off, dimming, or adjusting the output. It's even possible to upgrade to the nLight Eclipse, which provides a networked solution with options such as scheduling, and full site control.

### Helpful Links:

[Spec sheet](#)

[Independent Research](#)

[Other Resources](#)





## HL STEARN'S RUNNING TRAIL MAKEOVER



A popular running trail in Eugene, Oregon saw impressive upgrades after locals voiced their worries regarding the lack of proper lighting along the wooded path of the Amazon Creek Trail. HL Stearns Lighting and Controls were quick to provide a solution to the city, using 47 of **Hydrel's 3100C LED bollard** to ensure every concern was dashed:

- **Walkers' safety**
  - Each fixture capable of up to 1810 lumens; 180° light distribution
- **Consideration of the natural landscape and life along the trail**
  - Sleek but minimalist design; 2000k color temperature complements the flora while respecting the fauna
- **Avoid light pollution**
  - Forward throw distribution keeps the light to the path and not the creek behind it; louvers are designed to minimize light trespass; dome top complies with Eugene's Dark Sky requirements
- **Provide a solid, durable build**
  - Impact and vandal resistant; powder coat finish made to weather the outdoors
- **Supply energy efficiency**
  - Each bollard contains a photocell with dusk to dawn capability, lighting the path when it's needed most

[READ MORE ➔](#)