

# MARKCOVE

LINEAR COVE  
TUNABLE WHITE & WARM DIMMING  
WET LOCATION

## HIGHLIGHTS

- Low profile extruded aluminum housing
- Wide 120 x 120 distribution
- Tunable White available in Rhythm Range (2700-6500K) or Layers Range (2200-5000K) incorporate warm-neutral-cool LEDs
- Warm Dimming Golden Range from (3000-2200K)
- Wide and Powerful Range 300, 450, 600, 750 or 1000 lumens per foot
- Efficient with up to 111 lumens per watt
- DXM with Remote Device Management
- Full compliment of mounting and shielding accessories
- Manufactured in USA
- IP66 rated per IEC60598
- 3G vibration rated per ANSI C136.31

## LUMEN PACKAGES

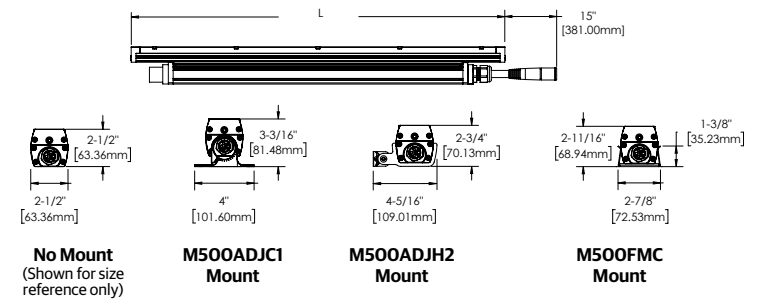
	2FT	3FT	4FT
Delivered Lumens	1163	1545	2196
Watts	11.49	15.82	20.35
LPW	101	98	108

Information based on 120x120DEG, 600 LMF WDIM

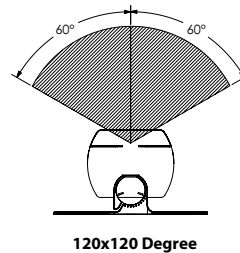


## DIMENSIONS

Reference Drawing Detail section for additional information



## STANDARD DISTRIBUTION



**TUNABLE  
WHITE**



**WARMDIM**



**AcuityBrands**

MARKCOVE  
Linear Cove  
Tunable White & Warm Dimming  
Wet Location

ORDERING Example: MCV502 LLP 20FT MSL4 M500FMC 90CRI TUWH RHYP 1000LMF 120X120DEG DARK MVOLT SIT DMX MFCLW10LR WL

Series	Linear Plan	Total Run Length	Max Section Length	Mounting	Mounting Option
MCV502 MARKCOVE 502	LLP Linear Longest Possible LSL Linear Same Length LCB Linear Center Balance	_FT Specify continuous linear feet in 1' increments, with a minimum of 2'. (Example: 24FT)	MSL2 2' MSL3 3' MSL4 4'	M500ADJCI Adjustable Mount Center Axis M500ADJH2 Adjustable Mount Side Hinge M500FMC Fixed Mount	(blank) No Cantilever option MCBT6 Cantilever Bracket 6" Projection MCBT12 Cantilever Bracket 12" Projection MCBT18 Cantilever Bracket 18" Projection MCBTL6 Cantilever Bracket Large 6" projection MCBTL12 Cantilever Bracket Large 12" projection MCBTL18 Cantilever Bracket Large 18" projection Must have M500ADJH2 Mounting selected.
Direct Light Source Color Rendering	Dynamic Feature	Dynamic Range	Direct LED Light Output	Distribution	Minimum Dimming Level
80CRI 80CRI 90CRI* 90CRI *Not available with LAYR	TUWH* Tunable White WDIM** Warm Dimming **Available with GOLR.	GOLR Golden Range (2200K-3000K) LAYR Layers Range (2200K-5000K) RHYP Rhythm Range (2700K-6500K)	300LMF 300 Nominal Lumens per Foot 450LMF 450 Nominal Lumens per Foot 600LMF 600 Nominal Lumens per Foot 750LMF 750 Nominal Lumens per Foot 1000LMF 1000 Nominal Lumens per Foot	120X120DEG 120 x 120 degrees	DARK Constant Current, Dimming to <1%
Optional Shielding	Voltage	Finish	Control Input	Power Feed	Option
(blank) No Shielding MBFC Baffle Linear Cove (Matte black finish) MGVC Glare Visor linear Cove (Finish to match housing)	MVOLT 120-277 Volt	WTP White Textured Paint SIT Silver Textured Paint BKT Black Textured Paint RAL TBD RAL Color TBD CPF Custom Paint Finish RAL TBD is for pricing only. Replace with applicable RAL number when placing order.	ZT* 0-10V DMX** DMX *For use with WDIM **For use with TUWH	NOFCL No Feed Cable (order separate) MFCLW10LR 10FT Feed Cable, Right Feed, Exterior Location MFCLW25LR 25FT Feed Cable, Right Feed, Exterior Location MFCLW50LR 50FT Feed Cable, Right Feed, Exterior Location MFCLW100LR 100FT Feed Cable, Right Feed, Exterior Location	WL Wet Location

Accessories	
Controller (Fresco Control System)	See page 8
DMX-Power Integrator (required for installation)	See page 8
Feed Cable (required for installation)	See page 8-10
Jumper Cable	See page 10
Wire Splice Box	See page 11
Liquid-Tight Cord Grip	See page 12
Glare Visor	See page 12
Baffle	See page 12
Brackets	See page 12

Model	Length	Weight
MCV502	25 - 1/8" (639mm)	3.5 lbs. (1.59kg)
	37" (941mm)	4.0 lbs (1.81kg)
	48 - 7/8" (1242mm)	5.0lbs. (2.27kg)

PERFORMANCE DATA

Tunable White RHYR Range

Lumens Per Foot	Fixture Length	Distribution	CCT/CRI 2700K/80	Input Watts 2700K/80	Delivered Lumens Per Foot	Input Watts Per Foot	CCT/CRI 4000K/80	Input Watts 4000K/80	Delivered Lumens Per Foot	Input Watts Per Foot	CCT/CRI 6500K/80	Input Watts 6500K/80	Delivered Lumens Per Foot	Input Watts Per Foot
300	2FT	120x120	629	8.99	315	4.50	726	8.23	363	4.12	786	7.8	393	3.90
	3FT	120x120	885	13.06	295	4.35	1022	11.95	341	3.98	1107	11.34	369	3.78
	4FT	120x120	1202	17.39	301	4.35	1388	15.91	347	3.98	1503	15.09	376	3.77
450	2FT	120x120	757	16.46	379	8.23	875	15.06	438	7.53	947	14.29	474	7.15
	3FT	120x120	1066	23.92	355	7.97	1231	21.89	410	7.30	1333	20.76	444	6.92
	4FT	120x120	1448	31.84	362	7.96	1672	29.13	418	7.28	1811	27.63	453	6.91
600	2FT	120x120	921	13.03	461	6.52	1063	11.92	532	5.96	1151	11.31	576	5.66
	3FT	120x120	1296	18.93	432	6.31	1496	17.32	499	5.77	1620	16.43	540	5.48
	4FT	120x120	1760	25.2	440	6.30	2033	23.06	508	5.77	2201	21.87	550	5.47
750	2FT	120x120	1096	16.64	548	8.32	1266	15.23	633	7.62	1371	14.44	686	7.22
	3FT	120x120	1543	24.18	514	8.06	1782	22.13	594	7.38	1929	20.99	643	7.00
	4FT	120x120	2096	32.19	524	8.05	2421	29.45	605	7.36	2621	27.94	655	6.99
1000	2FT	120x120	1283	20.87	642	10.44	1481	19.1	741	9.55	1604	18.11	802	9.06
	3FT	120x120	1805	30.32	602	10.11	2084	27.75	695	9.25	2257	26.32	752	8.77
	4FT	120x120	2452	40.36	613	10.09	2832	36.94	708	9.24	3066	35.03	767	8.76

Tunable White LAYR Range

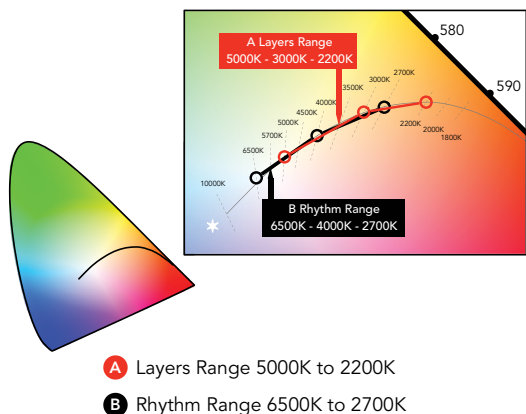
Lumens Per Foot	Fixture Length	Distribution	CCT/CRI 2200K/80	Input Watts 2200K/80	Delivered Lumens Per Foot	Input Watts Per Foot	CCT/CRI 3500K/80	Input Watts 3500K/80	Delivered Lumens Per Foot	Input Watts Per Foot	CCT/CRI 5000K/80	Input Watts 5000K/80	Delivered Lumens Per Foot	Input Watts Per Foot
300	2FT	120x120	419	6.56	210	3.28	479	5.12	240	2.56	476	4.85	238	2.43
	3FT	120x120	607	9.8	202	3.27	695	7.64	232	2.55	691	7.24	230	2.41
	4FT	120x120	796	12.74	199	3.19	911	9.94	228	2.49	906	9.42	227	2.36
450	2FT	120x120	697	9.95	349	4.98	797	7.76	399	3.88	792	7.35	396	3.68
	3FT	120x120	1011	14.86	337	4.95	1156	11.59	385	3.86	1149	10.98	383	3.66
	4FT	120x120	1325	19.32	331	4.83	1515	15.08	379	3.77	1507	14.28	377	3.57
600	2FT	120x120	907	13.05	454	6.53	1038	10.18	519	5.09	1032	9.64	516	4.82
	3FT	120x120	1316	19.49	439	6.50	1505	15.2	502	5.07	1496	14.4	499	4.80
	4FT	120x120	1725	25.34	431	6.34	1973	19.77	493	4.94	1962	18.73	491	4.68
750	2FT	120x120	1116	16.67	558	8.34	1276	13.01	638	6.51	1269	12.32	635	6.16
	3FT	120x120	1618	24.9	539	8.30	1851	19.43	617	6.48	1840	18.4	613	6.13
	4FT	120x120	2121	32.38	530	8.10	2426	25.26	607	6.32	2413	23.93	603	5.98
1000	2FT	120x120	1383	23.36	692	11.68	1582	18.22	791	9.11	1573	17.26	787	8.63
	3FT	120x120	2006	24.89	669	8.30	2294	27.22	765	9.07	2281	25.78	760	8.59
	4FT	120x120	2630	45.37	658	11.34	3008	25.4	752	6.35	2991	33.53	748	8.38

Warm Dimming GOLR Range

Lumens Per Foot	Fixture Length	Distribution	CRI	Delivered Lumens	Input Watts	Lumen/ Watt	Delivered Lumens Per Foot	Input Watts Per Foot
300	2FT	120x120	80	605	6.38	95	303	3.19
	3FT	120x120	80	804	8.79	91	268	2.93
	4FT	120x120	80	1143	11.31	101	286	2.83
450	2FT	120x120	80	879	9.47	93	440	4.74
	3FT	120x120	80	1168	13.03	90	389	4.34
	4FT	120x120	80	1661	16.77	99	415	4.19
600	2FT	120x120	80	1163	11.49	101	582	5.75
	3FT	120x120	80	1545	15.82	98	515	5.27
	4FT	120x120	80	2196	20.35	108	549	5.09
750	2FT	120x120	80	1450	13.74	106	725	6.87
	3FT	120x120	80	1926	18.91	102	642	6.30
	4FT	120x120	80	2739	24.33	113	685	6.08
1000	2FT	120x120	80	1918	17.61	109	959	8.81
	3FT	120x120	80	2549	24.24	105	850	8.08
	4FT	120x120	80	3624	31.19	116	906	7.80

Lumen values are from photometric tests performed in accordance with IESNA LM-79-08. Data is considered to be representative of the configurations shown, within the tolerances allowed by Lighting Facts. Actual performance may differ as a result of end-user environment and application. Contact factory for performance data on any configurations not shown here.

TUNABLE WHITE GAMUT AND RANGE



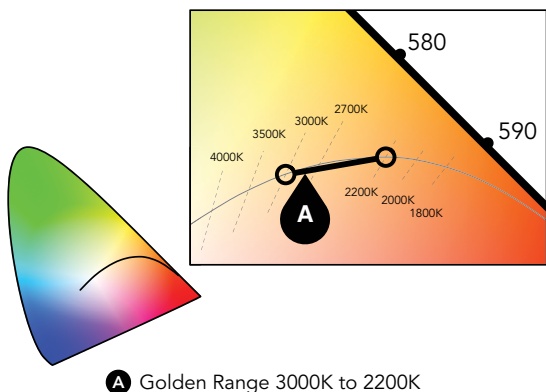
- The Gamut of a luminaire determines the potential color range, as well as light quality through measurements such as CRI and R9.
- The Path determines the range of colors temperatures available for the luminaire and how it tracks the Black Body Curve.

**TUNABLE WHITE GPHD**

- **Gamut:** One dimensional Warm-Neutral-Cool (WiNC)
- **Path:** Multi-segment (6500K to 2700K) (Rhythm Range) or (5000K to 2200K) (Layers Range)
- **Handle:** Three handles: Warm, Neutral and Cool
- **Data:** DMX512/RDM

Rhythm Range is for designers who want to mimic the natural rhythms of daylight, with a broad palette of color temperatures. Layers Range offers the flexibility of tunable white control with the aesthetics of warm dimming, reaching to 2200K.

WARM DIMMING GAMUT AND RANGE



- The Gamut of a luminaire determines the potential color range, as well as light quality through measurements such as CRI and R9.
- The Path determines the range of colors temperatures available for the luminaire.

**WARM DIMMING GPHD**

- **Gamut:** One dimensional Warm-Cool (WiC)
- **Path:** Straight Line 3000K to 2200K (Golden Range)
- **Handle:** One Handle: Intensity (with implicit CCT)
- **Data:** 0-10V

Replicate the comfortable, familiar feeling of traditional light sources warming in color as they are dimmed.

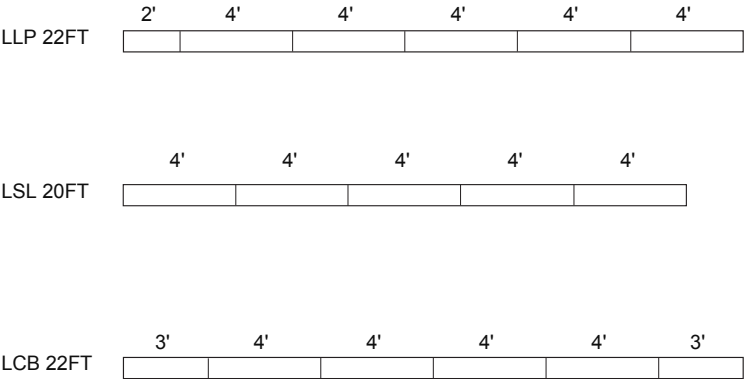
LINEAR PLAN

Mark offers the ability to provide a continuous run plan to suit your requirements by optionally offering three methods of configuration.

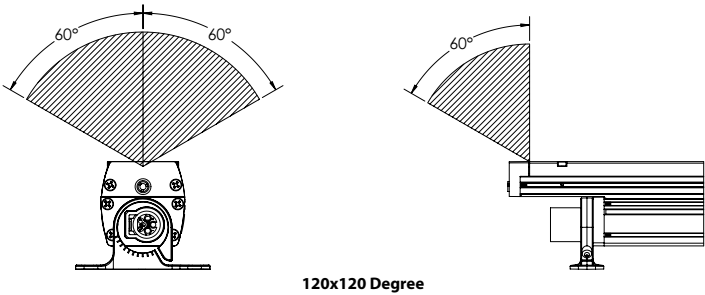
**LLP** Longest Length Possible:  
In this plan the longest length available is optimized resulting in the fewest segments and mounting locations. Caution should be used where balanced appearance is a concern. Example: 22FT row would have (5) 4FT segments and (1) 2FT segment located at one end.

**LSL** Longest Same Length:  
In this configuration each segment is the same length is standardized based on the longest length available and is the only option provided. Because it is dependent on one segment length there are mathematical limitations on what overall row lengths can be achieved. Example: 20FT row would be achieved with (5) 4FT long segments equaling 20FT (nominal).

**LCB** Longest Center Balanced:  
This configuration incorporates the longest center segment(s) along with any additional lengths required to fill located at each end. Example: 22FT row would have (2) 3FT segments (one at each end) and (4) 4FT intermediate segments located in between.



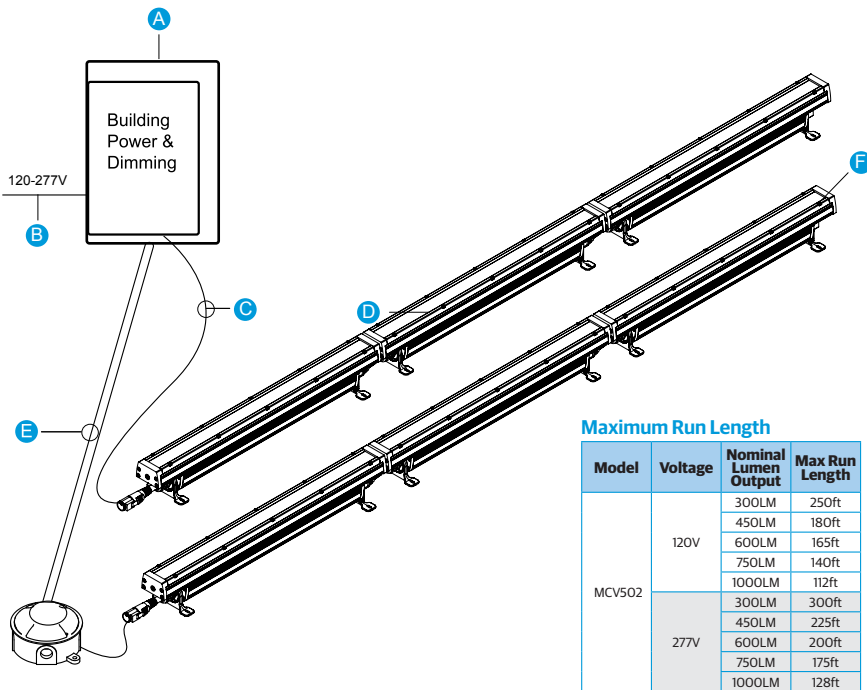
DISTRIBUTION



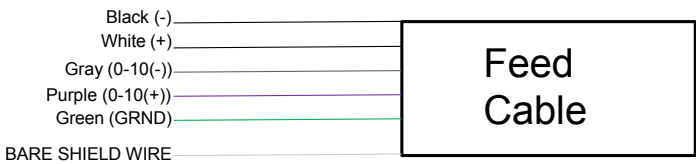
BASIC SYSTEM WIRING INFORMATION WITHOUT DMX

This very basic system wiring diagram provides an overview of components and materials required for a simple installation of MCV502 luminaires controlled by building system power (By Others). These diagrams should not be used in place of actual installation instructions or submittal drawings prepared for a specific project.

Interior application shown.



Feed Cable Wiring



\*Notes

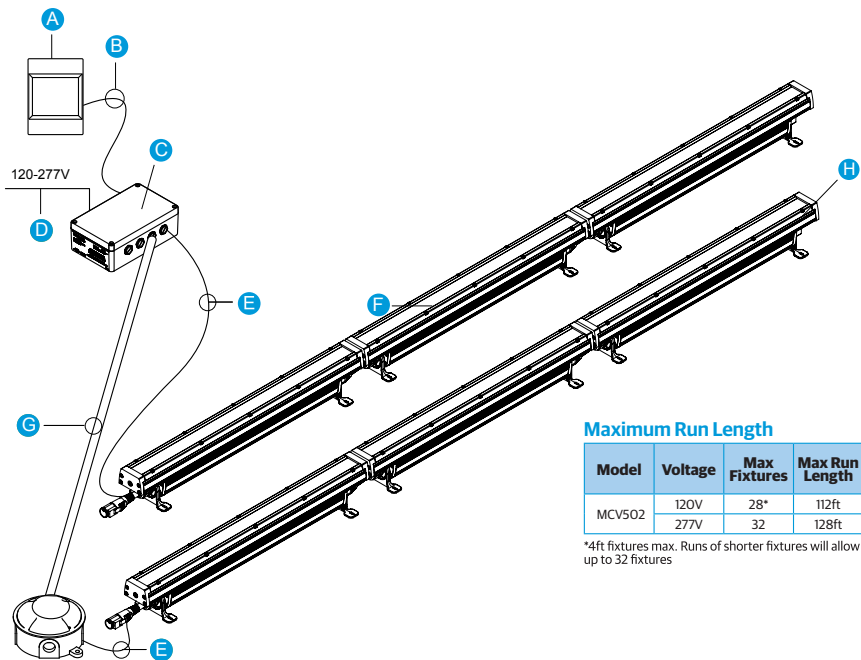
- 1) Cap BARE SHIELD WIRE in Junction box. (By Others)
- 2) When not using 0-10V dimming, cap Gray and Purple separately in the junction box. (By Others)

Luminaire installation can be as simple as a single luminaire and one control to many different luminaires in multiple locations being triggered and manipulated in real time. Consulting with the factory at the beginning stages of the project will ensure the required equipment be specified and properly installed.

- A Building power and dimming control input via 0-10V system provided by others.
- B 120V-277V input. Metallic conduit and standard fittings are compatible as are multi-conductor cords provided they are appropriate to the mounting location.
- C Feed cable connects junction box or control input with first fixture in a run. 14 ga. conductors carry power, shielded 18 ga. conductors carry data. Input end is stripped for connection to the junction box, output end includes a female or male plug for fixture connection. Also included with each feed cable is a sealing cap for the end of each run.
- D A maximum of 32 luminaires can be connected to a single feed cable.
- E Power can be run to junction box locations in rigid conduit. Use Belden 9829 for data and copper wire per local code for power. Use appropriate fitting for combination cord.
- F Included with each feed cable is a sealing cap for the last luminaire in each run. See installation instructions.

## BASIC SYSTEM WIRING INFORMATION WITH DMX

This very basic system wiring diagram provides an overview of components and materials required for a simple installation of MCV502 luminaires controlled by a DMX controller. These diagrams should not be used in place of actual installation instructions or submittal drawings prepared for a specific project.

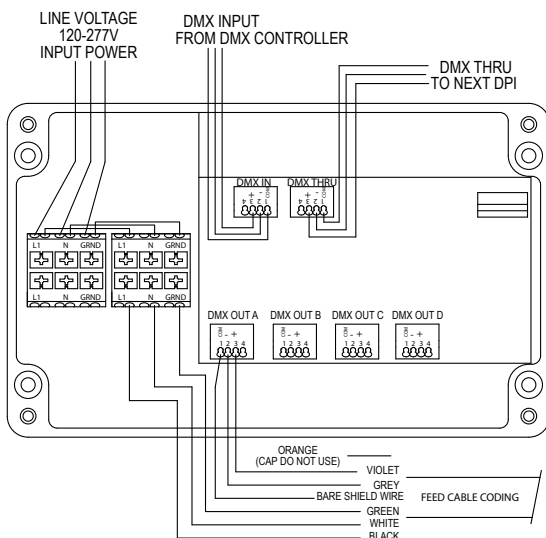


Maximum Run Length

Model	Voltage	Max Fixtures	Max Run Length
MCV502	120V	28*	112ft
	277V	32	128ft

\*4ft fixtures max. Runs of shorter fixtures will allow up to 32 fixtures

### Power & DMX Connection in DPI Box



A tunable white luminaire installation can be as simple as a single luminaire and one control to many different luminaires in multiple locations being triggered and manipulated in real time. Consulting with the factory at the beginning stages of the project will ensure the required equipment be specified and properly installed.

Note: For multiple runs and multiple DPI boxes, consult factory.

Note: No more than four DPI Boxes, in series, can be utilized between the DMX Controller and any luminaire.

- A** DMX controller providing one universe of DMX-512 control.

To supply a complete system RDM set-up and playback control solution, use:

Fresco

- Manage multiple light sources in multiple lighting zones, all from one controller
- On screen lighting design and set-up, no computer required or Ethernet connection for remote configuration and advanced control
- All device settings are stored on-board in non-volatile memory

- B** Belden 9829 cable is the preferred communication/data cable used to carry the DMX signal to and from the DPI Box. The total length of this cable must not exceed 1000 feet from the DMX controller to the DPI Box. No luminaires should be installed between DMX Controller and any DPI Box.

- C** DPI box (Data Power Integration) is used to bundle DMX to line voltage and deliver them to the luminaire. This box provides necessary isolation between the DMX control and line voltage and is required for all MCV502 installations. The DPI box also serves as a 4-channel splitter enabling up to 128 fixtures to be controlled from a single DPI box. Refer to DPI Installation Sheet for dimensions and mounting details.

- D** 120V-277V input to DPI box. Metallic conduit and standard fittings are compatible as are multi-conductor cords provided they are appropriate to the mounting location.

- E** Feed cable connects junction box with first fixture in a run. 14 ga. conductors carry power, shielded 18 ga. conductors carry data. Input end is stripped for connection to the Junction or DPI box, output end includes a male or female plug for fixture connection. Also included with each feed cable is a termination/sealing cap for the end of each run. Contact factory for availability of custom feed cable lengths.

- F** A maximum of 32 luminaires can be connected to a single output channel of the DPI box. The maximum length of cord and luminaire run combined is 1000 feet per DMX/RDM specification.

- G** Power and Data can be run to junction box locations in rigid conduit. Use Belden 9829 for data and copper wire per local code for power. Use appropriate fitting for combination cord.

- H** To ensure data integrity, a termination/sealing cap with 120 Ohm resistor is required at the last luminaire in each run. See installation instructions.

### Fresco Control System





## ACCESSORY OPTIONS

### Fresco Control System

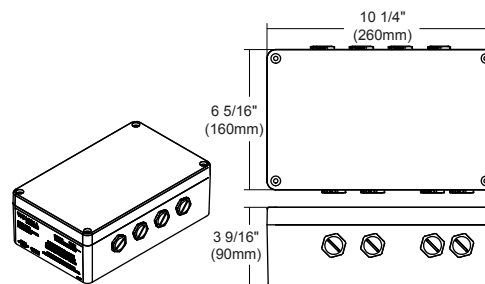
Series	Model	Options	Finish
<b>FCS</b> Fresco Control System	<b>7TSN</b> 7" touchscreen with nLight port	<b>(blank)</b> nlight only <b>X</b> DMX/RDM control	<b>DBL</b> Black <b>DWH</b> White <b>DNA</b> Natural Aluminum



Refer to [FRESCO](#) spec sheet for additional details and options

### DMX / Power Integrator

Model
<b>MDPI4W</b> DPI4W- DMX/POWER INTEGRATOR BOX



Integrates DMX signal & 120-277 line voltage onto a single cable. Exterior rated, up to 4 output feeds, Silver Textured Finish.

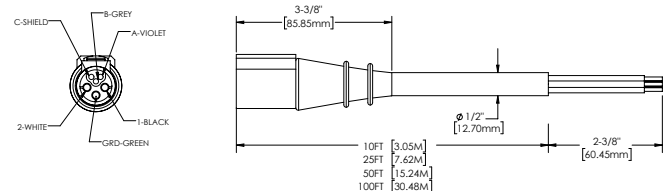
#### Environmental Information

Storage Temperature	40 °F - 185 °F
Start-up Temperature	13 °F - 122 °F
Operating Temperature	13 °F - 122 °F
Ingress Protection Rating	IP65
Environment	Suitable for indoor and outdoor applications

### Feed Cable, Right Feed (Female Plug)

\*Minimum of one feed cable, right, required per installation

Model	
<b>MFCLW10LR BCRD DXP</b>	10FT Feed Cable w/ Sealing Cap, Right Feed, Exterior Location (Black)
<b>MFCLW25LR BCRD DXP</b>	25FT Feed Cable w/ Sealing Cap, Right Feed, Exterior Location (Black)
<b>MFCLW50LR BCRD DXP</b>	50FT Feed Cable w/ Sealing Cap, Right Feed, Exterior Location (Black)
<b>MFCLW100LR BCRD DXP</b>	100FT Feed Cable w/ Sealing Cap, Right Feed, Exterior Location (Black)



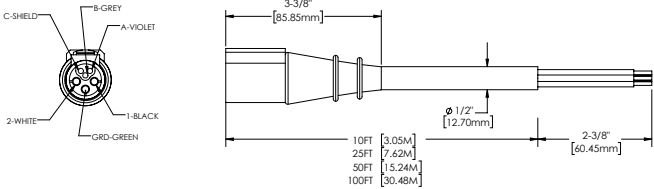
Carries DMX signal and 120-277 line voltage power to right end of first fixture in run. Supplied with termination/sealing cap. \*Use one feed cable per run only.\*



ACCESSORY OPTIONS (CONTINUED)

Feed Cable, Right Feed (Female Plug) EXTERIOR (Linear)  
\*Minimum of one feed cable, right, required per installation

Model	
MFCLW10LR BCRD NDXP	10FT Feed Cable w/ Sealing Cap, Right Feed, Exterior Location (Black)
MFCLW25LR BCRD NDXP	25FT Feed Cable w/ Sealing Cap, Right Feed, Exterior Location (Black)
MFCLW50LR BCRD NDXP	50FT Feed Cable w/ Sealing Cap, Right Feed, Exterior Location (Black)
MFCLW100LR BCRD NDXP	100FT Feed Cable w/ Sealing Cap, Right Feed, Exterior Location (Black)

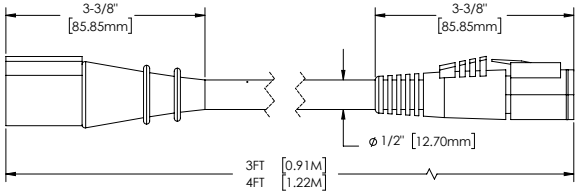


Carries NON-DMX signal and 120-277 line voltage power to right end of first fixture in run.  
Supplied with termination/sealing cap.  
\*Use one feed cable per run only.\*

Jumper Cable \*Optional\*

Model	
MJCLW3L BCRD	3FT Jumper Cable Exterior Location (Black)
MJCLW4L BCRD	4FT Jumper Cable Exterior Location (Black)

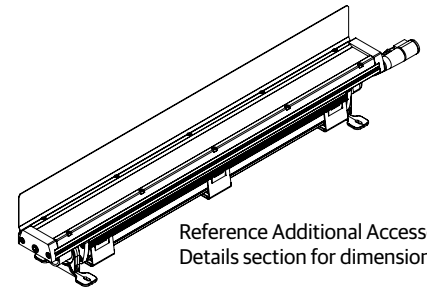
Standard fixture is supplied with 15" cable to connect from one fixture to the next in a continuous run application. If a larger gap between fixtures is required, an optional jumper cable can be ordered separately. Cable carries DMX or NON-DMX signal and 120-277 line voltage power between two units in a run.



## ACCESSORY OPTIONS (CONTINUED)

### Glare Visor (Linear) \*Optional\*

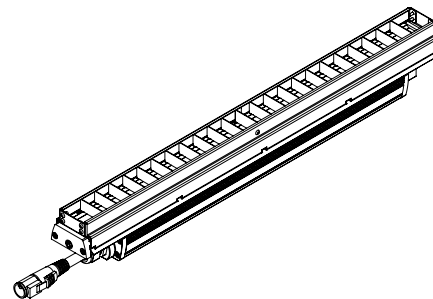
Model	Fixture Section	Finish	Option
<b>MGVC5</b> Glare Visor Linear Cove	<b>U2</b> 2FT Length Unit	<b>BKT</b> Black Textured Paint	<b>WL</b> Wet Location
	<b>U3</b> 3FT Length Unit	<b>SIT</b> Silver Textured Paint	
	<b>U4</b> 4FT Length Unit	<b>WTP</b> White Textured Paint	
		<b>RALTBD</b> RAL Paint Finish	
		<b>CPF</b> Custom Painted Finish	



Reference Additional Accessory Details section for dimensions

### Baffle (Linear) \*Optional\*

Model	Fixture Section	Option
<b>MBFC5</b> Baffle Linear Cove (Available in matte black finish only)	<b>U2</b> 2FT Length Unit	<b>WL</b> Wet Location
	<b>U3</b> 3FT Length Unit	
	<b>U4</b> 4FT Length Unit	

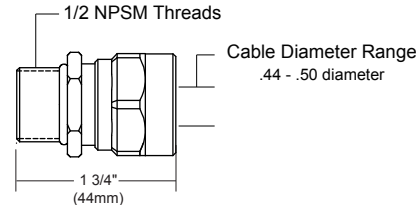


Reference Additional Accessory Details section for dimensions

### Liquid-Tight Cord Grip \*Optional\*

Model
-------

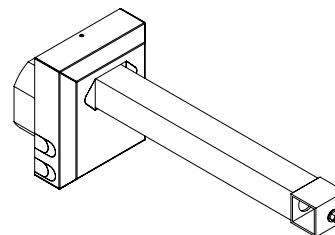
**MCORDGP2** Liquid-Tight Cord Grip (Use to secure and seal feed cord to DPI Box)



Connector to secures and seal feed cord.

### Brackets \*Optional\*

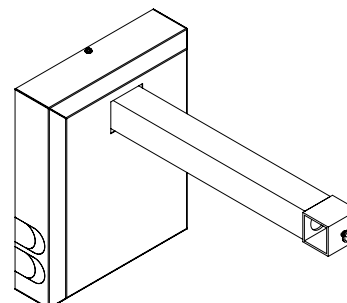
Series	Finish
<b>MCBT6</b> Cantilever Bracket 6" Projection	<b>BKT</b> Black Textured Paint
<b>MCBT12</b> Cantilever Bracket 12" Projection	<b>SIT</b> Silver Textured Paint
<b>MCBT18</b> Cantilever Bracket 18" Projection	<b>WTP</b> White Textured Paint
	<b>RALTBD</b> RAL Paint Finish
	<b>CPF</b> Custom Painted Finish



Reference Additional Accessory Details section for dimensions

### Brackets \*Optional\*

Series	Finish
<b>MCBTL6</b> Cantilever Bracket Large 6" Projection	<b>BKT</b> Black Textured Paint
<b>MCBTL12</b> Cantilever Bracket Large 12" Projection	<b>SIT</b> Silver Textured Paint
<b>MCBTL18</b> Cantilever Bracket Large 18" Projection	<b>WTP</b> White Textured Paint
	<b>RALTBD</b> RAL Paint Finish
	<b>CPF</b> Custom Painted Finish

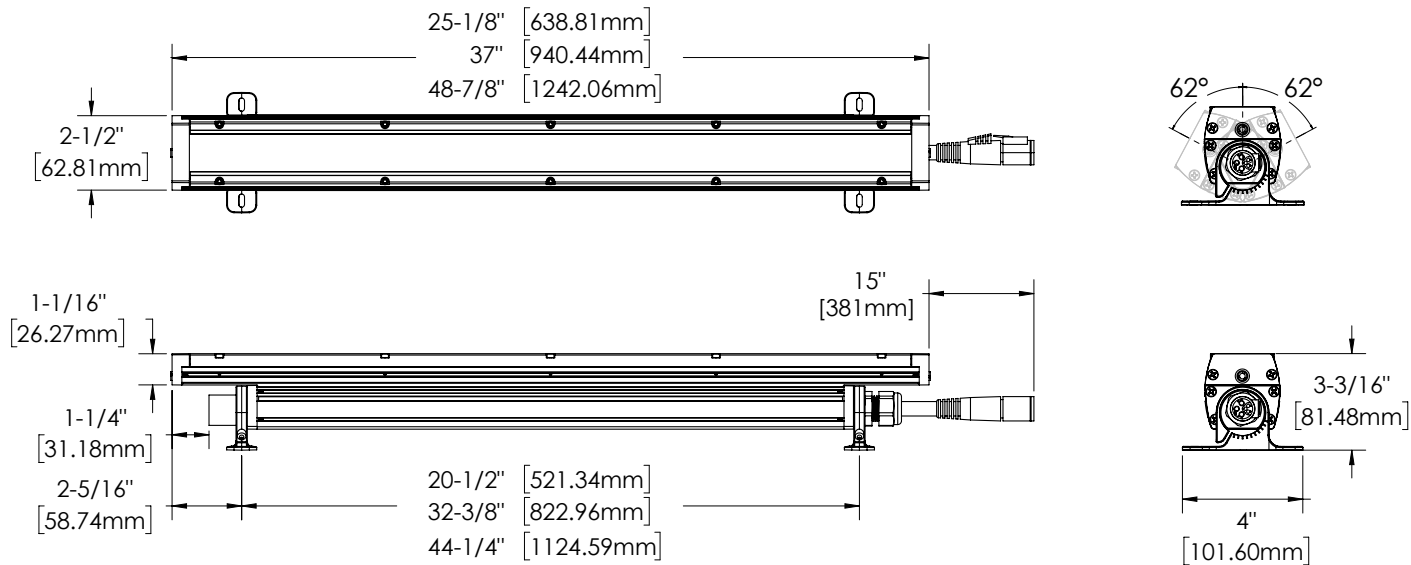


For use with surface mount junction box (by others) and surface mounted conduit (by others).

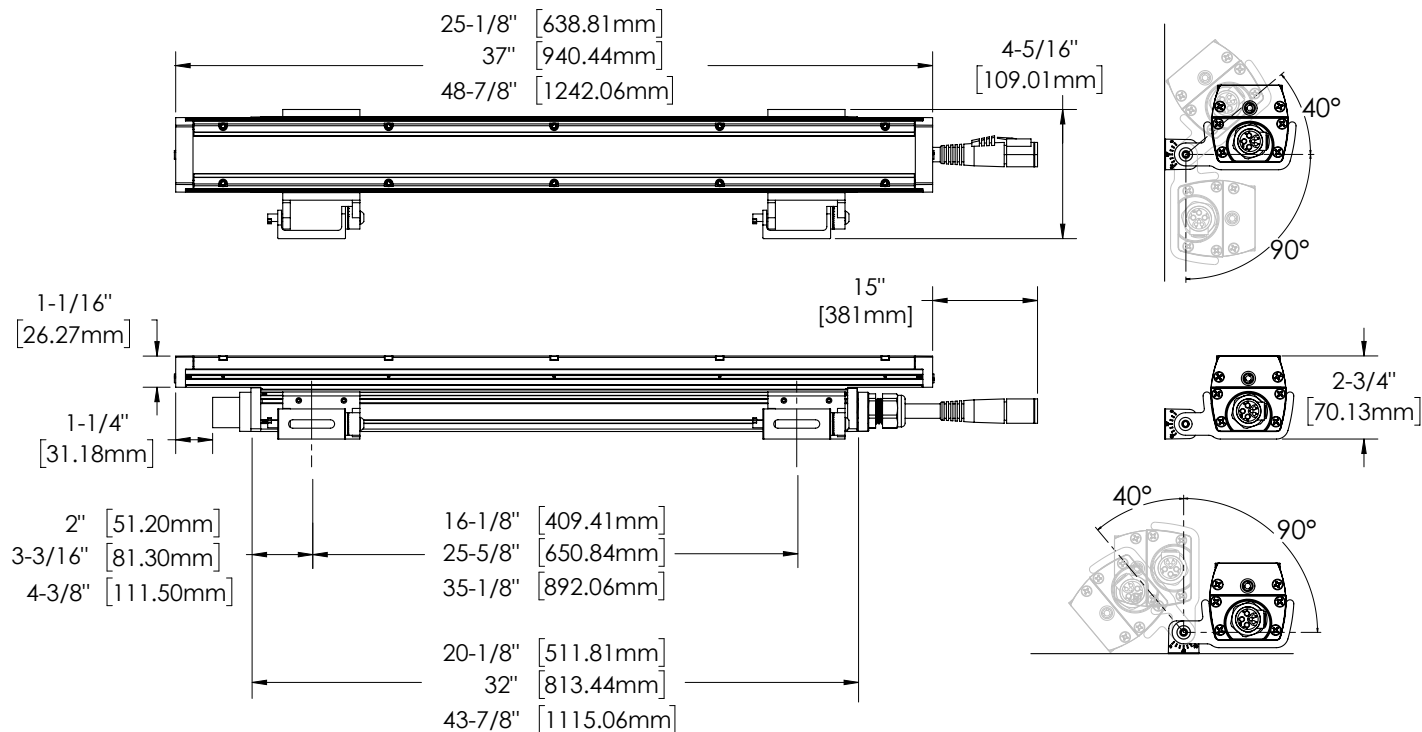
Reference Additional Accessory Details section for dimensions

**DRAWING DETAILS**

**M500ADJC1 - Adjustable Mount Center Axis**



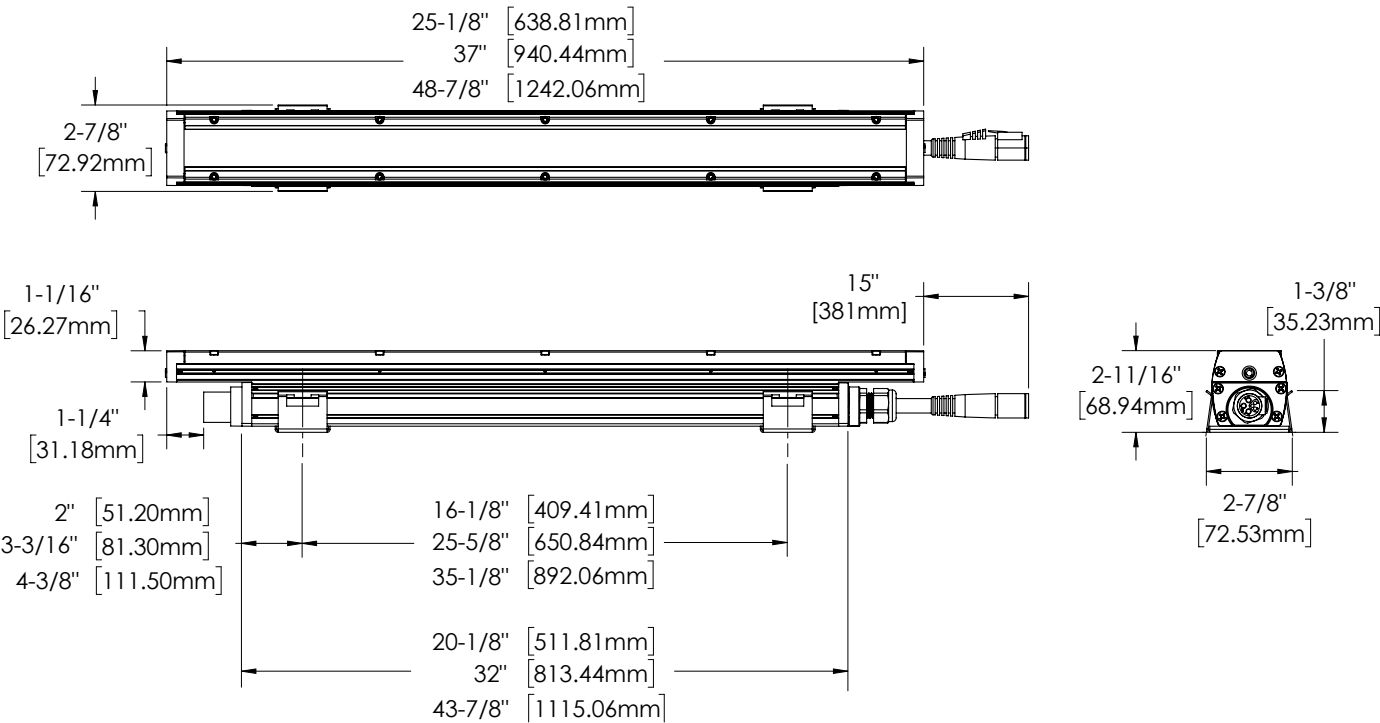
**M500ADJH2 - Adjustable Mount Side Hinge**



Linear Cove  
Tunable White & Warm Dimming  
Wet Location

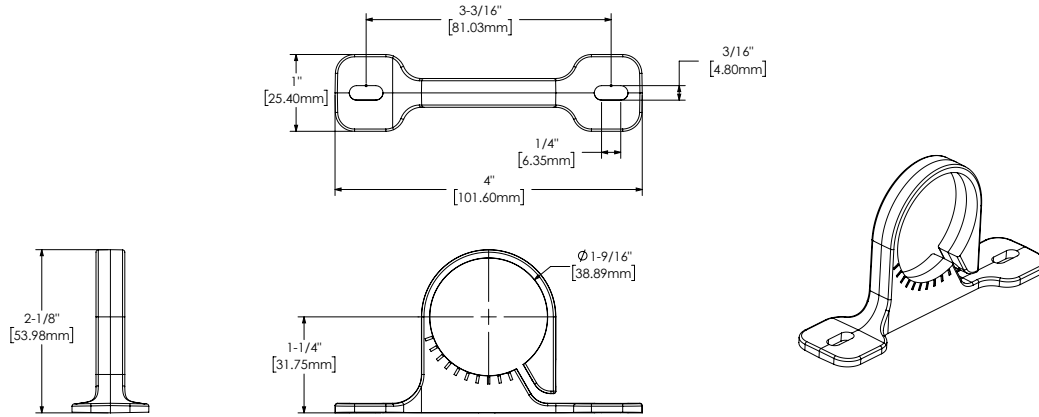
**DRAWING DETAILS (CONTINUED)**

**M500FMC - Fixed Mount**

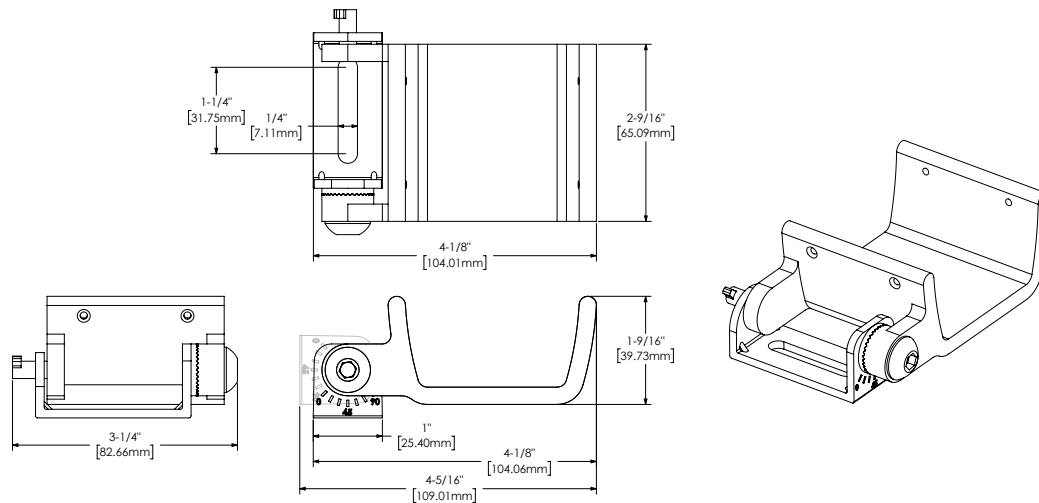


**DRAWING DETAILS (CONTINUED)**

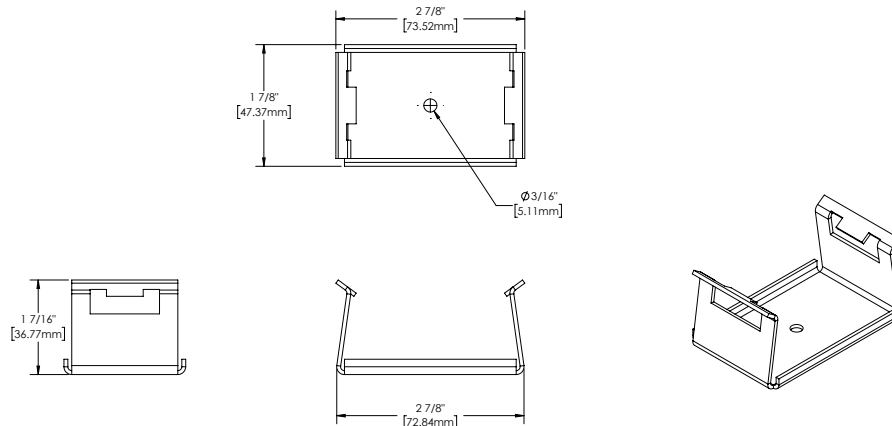
**M500ADJC1 - Adjustable Mount Center Axis Detail**



**M500ADJH2 - Adjustable Mount Side Hinge Detail**

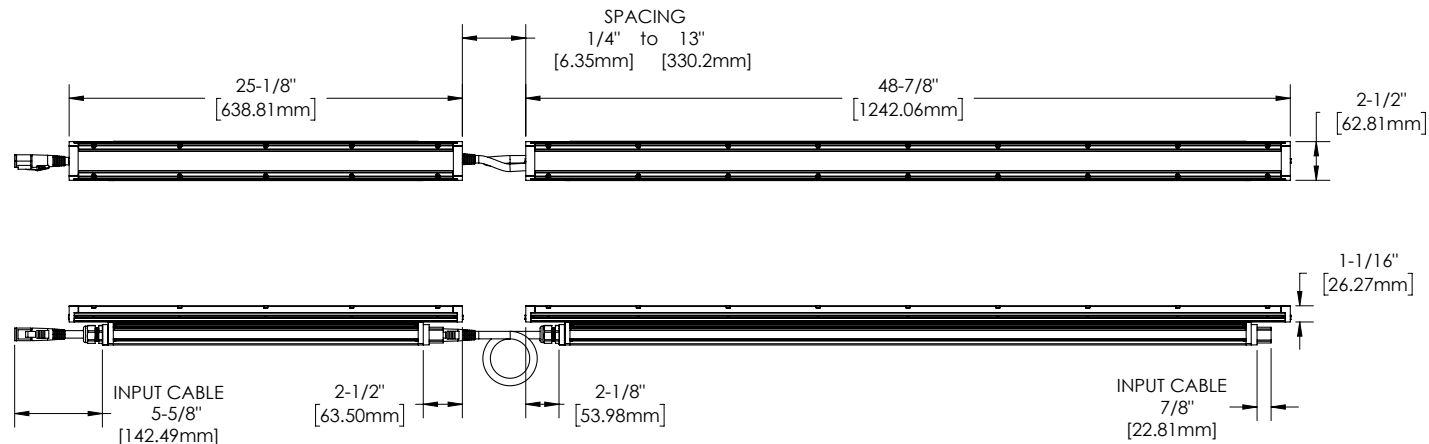


**M500FMC - Fixed Mount Detail**



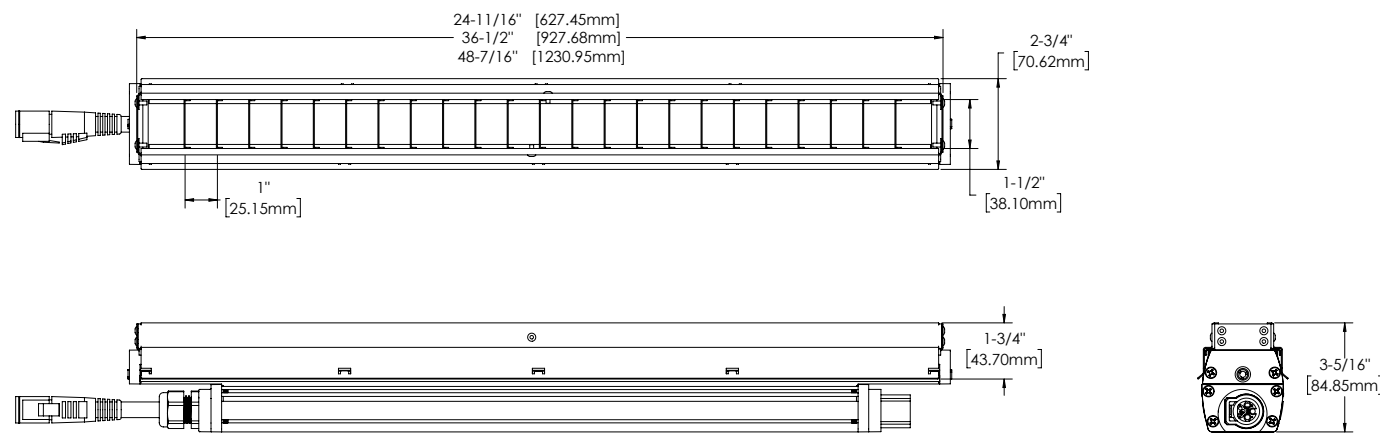
DRAWING DETAILS (CONTINUED)

MCV502 Series Typical End-To-End Run Configuration



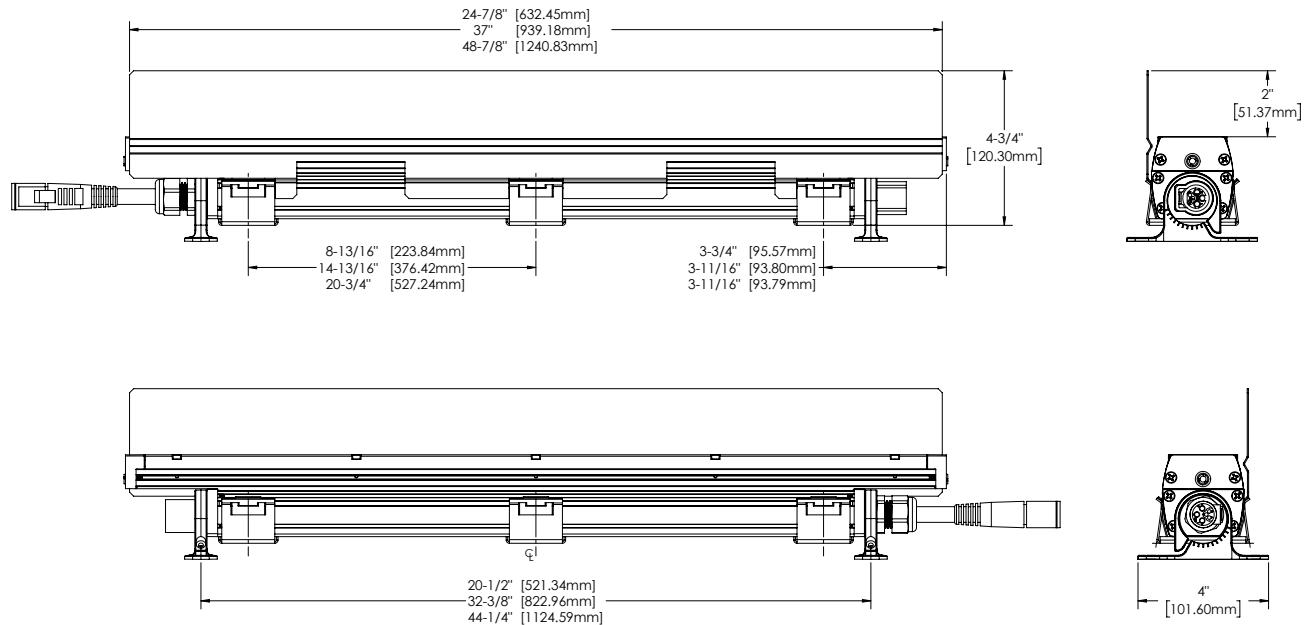
ADDITIONAL ACCESSORY DETAILS

Baffle Linear Cove

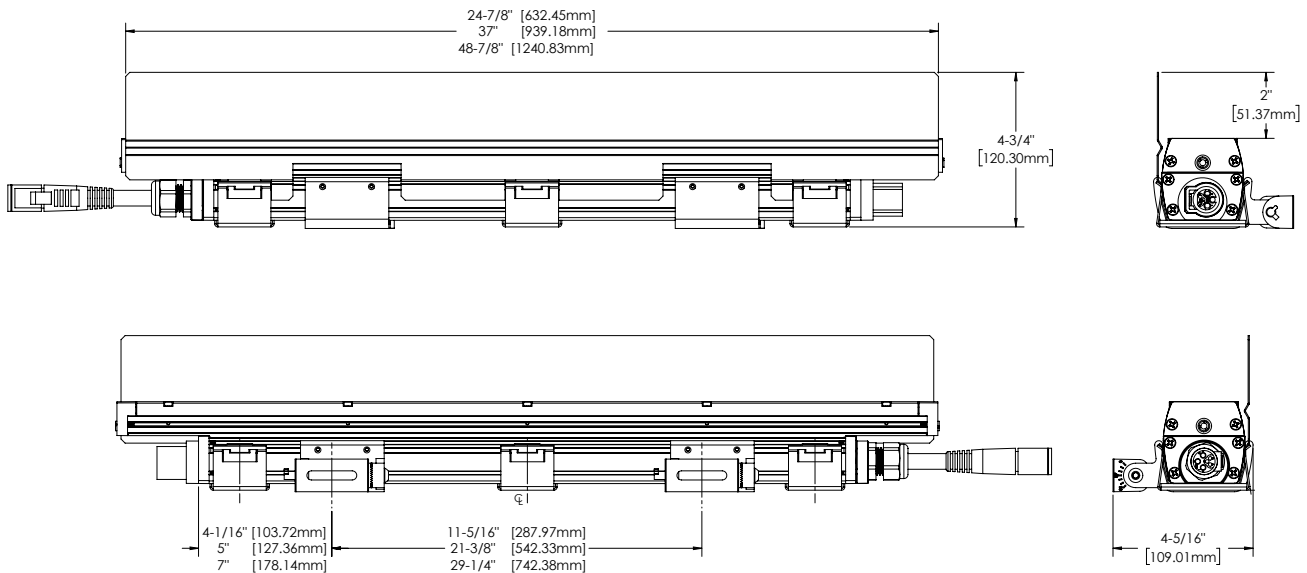


**ADDITIONAL ACCESSORY DETAILS (CONTINUED)**

**Glare Visor with M500ADJC1 Mount**



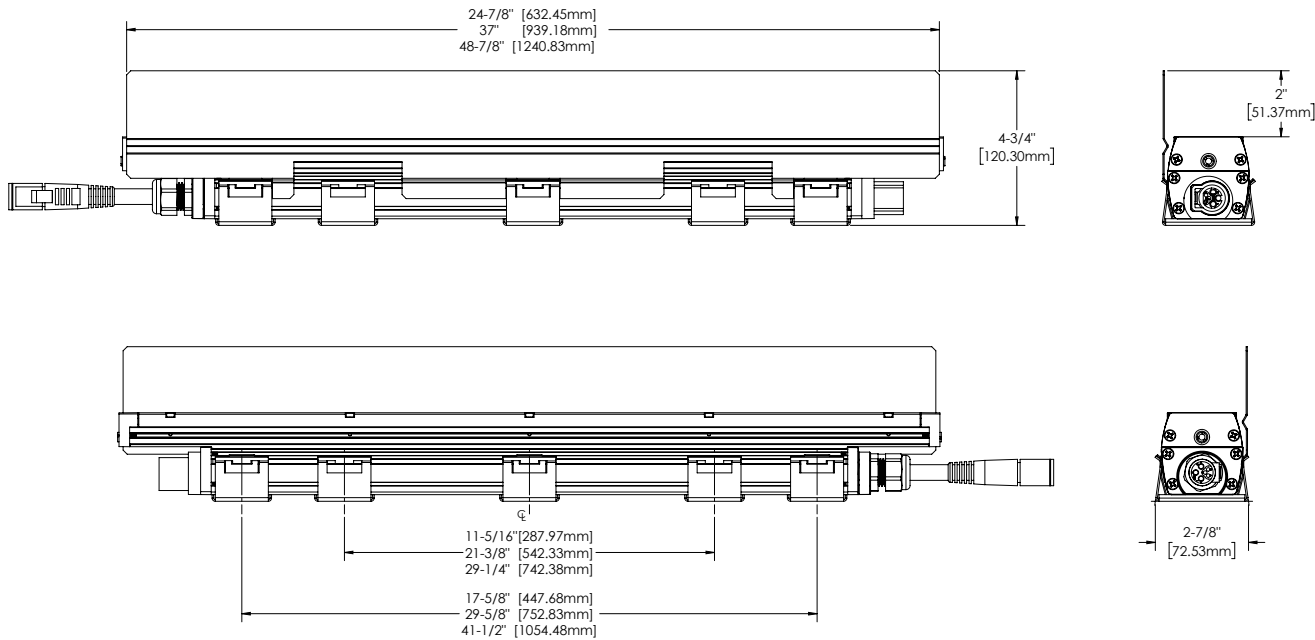
**Glare Visor with M500ADJH2 Mount**



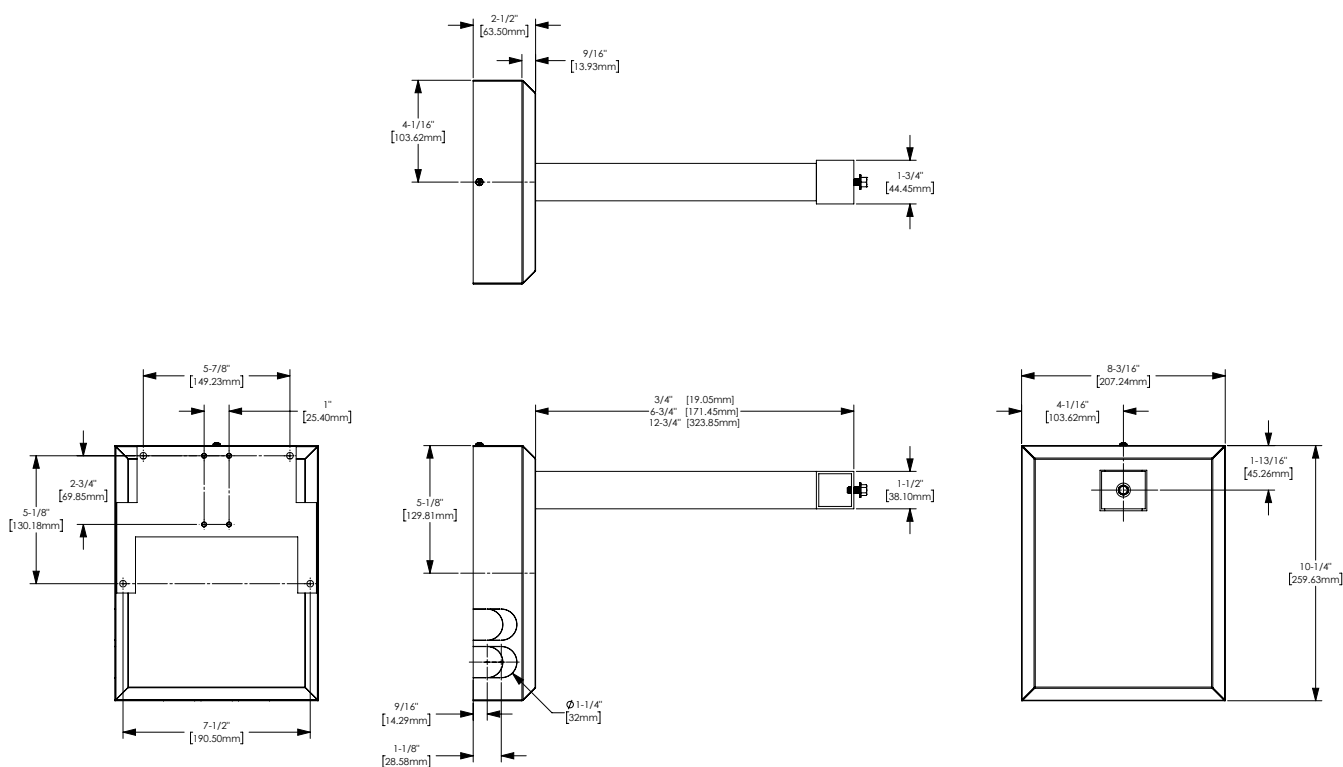


**ADDITIONAL ACCESSORY DETAILS (CONTINUED)**

**Glare Visor with M500FMC Mount**

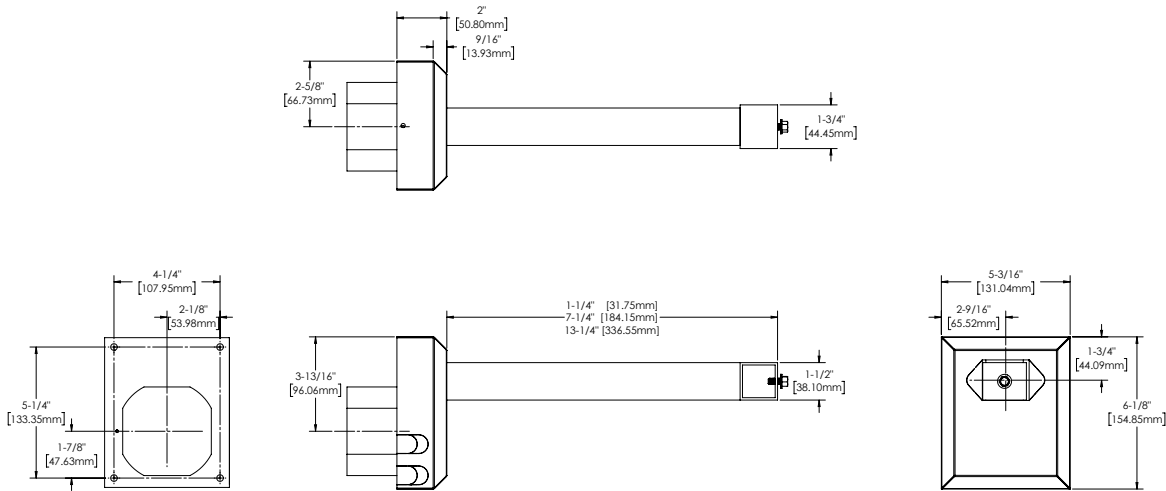


**Cantilever Bracket Large Detail**

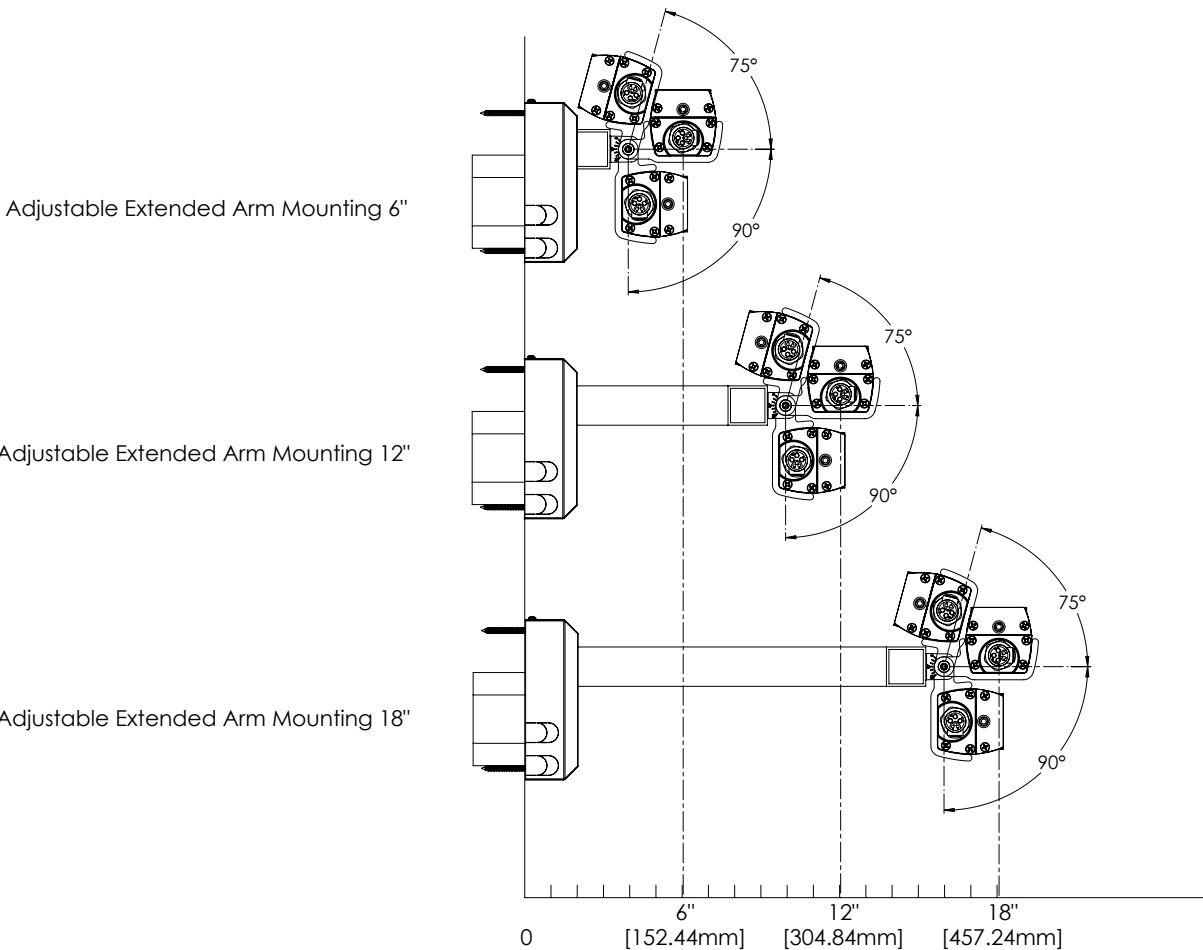


ADDITIONAL ACCESSORY DETAILS (CONTINUED)

Cantilever Bracket Detail

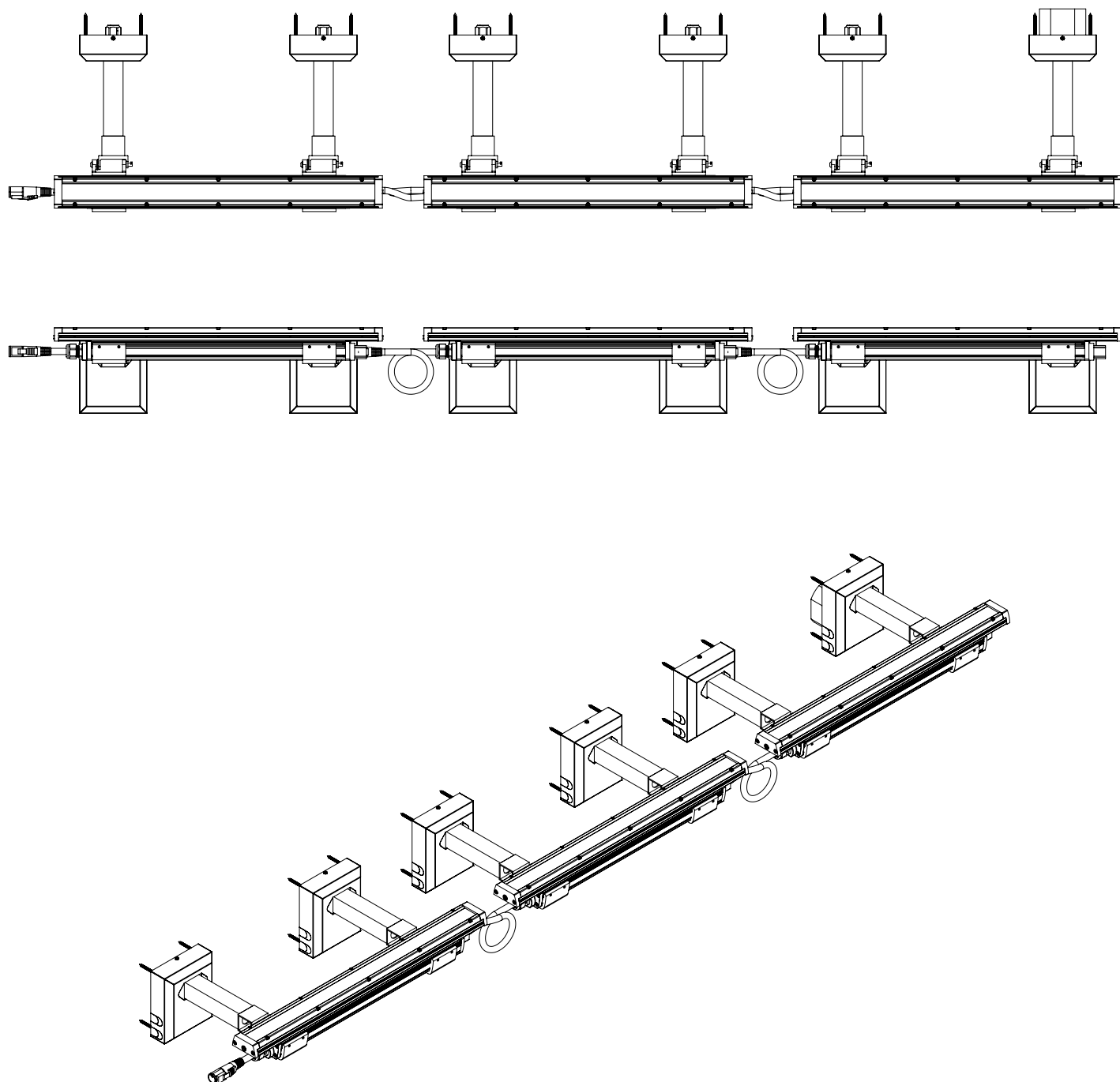


Cantilever Bracket Detail with M500ADJH2 and Fixture



**ADDITIONAL ACCESSORY DETAILS (CONTINUED)**

**MCV502 Series Typical End-To-End Run Configuration with Cantilever Brackets  
(Showing 6-foot run of (3) 2-foot units with MCBT12 bracket accessory)**



## SPECIFICATIONS

**Voltage:** 120 through 277v/50-60HZ

**Distribution:** 120° x 120°

**Size:** 2.50 W x 2.50 H

**Housing:** Extruded aluminum snap together construction

**Finish:** Polyester powder coat painted finish. Black oxide fastener color with BKT finish and natural stainless steel fastener color with WTP & SIT finishes

**Lens Material:** Extruded acrylic with frosted surface

**Lumen Maintenance:** LAYR: 60,000 hours L70 @ +120deg C.  
RHYR: 120,000 hours L70@ +55deg C. GOLR: 60,000 hours L70 @ +55deg C

**LED Color Mix:** RHYR: 12 LEDs per 12 inches in a 1:1 ratio (1x2700k, 1x4000k, 1x6500k). LAYR: 12 LEDs per 12 inches in a 1:1 ratio (1x2200k, 1x3000k, 1x5000k). GOLR: 12 LEDs per 12 inches in a 2:1 ratio (2x3000k, 1x2200k)

**Control System:** Fresco DMX512 controller, 0-10V dimmer control (WDIM)

**Ambient Temperature Ranges:** -40° to +45°C

**Ingress Protection Rating:** IP66 rated per IEC60598

**Vibration:** 3G vibration rated per ANSI 136.31

**Mounting:** Suitable for mounting within the space between ground and 4FT (1.2M) of the ground. Suitable for outdoor wet location applications.

**Certification/Compliance:** CSA Certified to meet U.S. and Canadian standards conforming to UL 1598 and CAN/CSA C22.2 No. 250.0

**Weight:** 24" - 3.5 lbs (1.59 kg) / 36" - 4.0 lbs (1.81 kg) / 48" - 5.0 lbs (2.27 kg)

**Buy American:** This product is assembled in the USA and meets the Buy America(n) government procurement requirements under FARS, DFARS and DOT. Please refer to [www.acuitybrands.com/resources/buy-american](http://www.acuitybrands.com/resources/buy-american) for additional information.

**Warranty:** 5-year limited warranty. Complete warranty terms located at: [www.acuitybrands.com/support/warranty/terms-and-conditions](http://www.acuitybrands.com/support/warranty/terms-and-conditions)

**Note:** Actual performance may differ as a result of end-user environment and application.

All values are design or typical values, measured under laboratory conditions at 25 °C.

Specifications subject to change without notice.

**Assembled in America:** Buy American Act Compliant