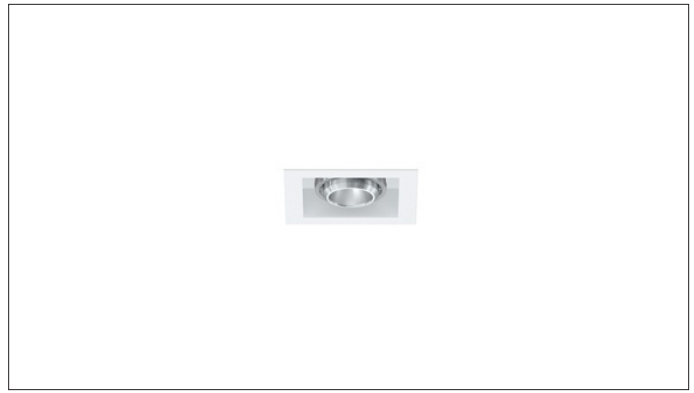




## 3G-RC1M5

1 LIGHT MINI MADISON  
DYNAMIC WHITE

New construction, shallow housing, and IC housing options available  
Trim fixture designed to conceal internal hardware  
Trimless fixture features a proprietary aluminum mudding flange  
Machined aluminum double gimbal. Adjustable and lockable  
1.95" Regressed LED source for enhanced glare control  
Dim to Warm and Tunable White LED options up to 2000lm (90+ CRI)  
1% dimming standard with several integral driver options



### ORDERING INFORMATION

<b>PROJECT:</b>	<input type="text"/>	<b>TYPE:</b>	<input type="text"/>
<b>CATALOG #:</b>	<input type="text"/>	<b>DATE:</b>	<input type="text"/>

CAT. NO	LED SOURCE	LUMEN OUTPUT	CRI	BEAM ANGLE	VOLTAGE
<b>3G-RC1M5</b>	<b>DW</b> - DIM TO WARM (1800-3000K)	<b>08</b> - 800 LUMENS <b>12</b> - 1200 LUMENS	<b>H90</b> - 90+ CRI	<b>20D</b> - 20° <sup>2</sup> <b>40D</b> - 40° <b>60D</b> - 60° <b>90D</b> - 90° *	<b>UNV</b> - 120/277V <b>120</b> - 120V <b>347</b> - 347V (0-10V ONLY)
	<b>TW</b> - TUNABLE WHITE <sup>1</sup> (2700K-6500K)	<b>20</b> - 2000 LUMENS			

\* 90D reflector supplied standard with lens

DRIVER	FLANGE TYPE	GIMBAL FINISH	HOUSING INTERIOR
<b>DIM</b> - 0-10V (STANDARD 100-1%) <b>LE</b> - PHASE DIMMING <sup>3</sup> (TRIAC/ELV, 100-1%) <b>LTEA</b> - LUTRON HI-LUME LTEA <sup>3</sup> (FWD PHASE, 100-1%) <b>D01</b> - 0-10V (eldoLED, 100-0.1%) <sup>1</sup> <b>DALI</b> - DALI (eldoLED, 100-1%) <sup>1,4</sup> <b>DHL2</b> - LUTRON HI-LUME LDE1 (1% ECOSYSTEM) <b>DMX</b> - DMX (eldoLED, 100-0%) <sup>1</sup>	<b>WT</b> - WHITE (STANDARD) <b>ST</b> - SILVER <b>BT</b> - BLACK <b>CT</b> - CUSTOM <b>XTR</b> - TRIMLESS	<b>NG</b> - NATURAL ALUMINUM <b>BG</b> - BLACK <b>WG</b> - WHITE	<b>BK</b> - BLACK (STANDARD) <b>WH</b> - WHITE <b>CF</b> - CUSTOM

HOUSING TYPE	OPTIONS
<b>NC</b> - NEW CONSTRUCTION (NON-IC) <b>IC</b> - IC HOUSING <b>SH</b> - SHALLOW HOUSING (IC RATED - BLACK ONLY)	<b>BH</b> - C-CHANNEL BAR HANGERS <b>CP</b> - CHICAGO PLENUM <b>EMR</b> - EMERGENCY BATTERY (REMOTE) <sup>5</sup> <b>HXB50</b> - BLACK HEXCELL LOUVER <b>LS50</b> - LINEAR SPREAD LENS <b>PM50</b> - PRISMATIC LENS <b>SF50</b> - SOFTENING LENS

Maximum 2 optical accessories. See optical accessories page for more options

<sup>1</sup> Tunable White option available with D01, DALI and DMX drivers  
<sup>2</sup> 20D reflector available with 800 lumen output only  
<sup>3</sup> Phase dimming options available in 120V only  
<sup>4</sup> DALI-2 (Type 6) provided as standard. Please consult factory for DALI (Type 8) options  
<sup>5</sup> Emergency battery installed remotely by others. Not accessible through the inside of the fixture

**3GD** - Warm Dim  
**3GT** - Tunable White

MAY 26, 2020

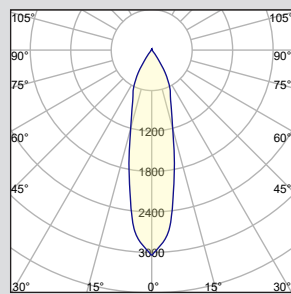


### PERFORMANCE CHART BASED ON 60° BEAM AND 3000K SOURCE

DIM TO WARM LUMEN OUTPUT	90+ CRI (3000K)		
	DELIVERED LUMENS	SYSTEM WATTS	EFFICACY (LPW)
800LMs	N/A	N/A	N/A
1200LMs	1145	15.4	74
2000LMs	1611	23.2	69

### PHOTOMETRY

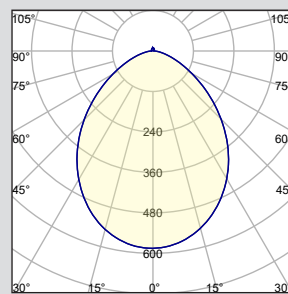
#### 20D - 20° BEAM ANGLE



#### 3G-RC1M5-DW-08-H90-20D

LUMEN OUTPUT: 800LMs  
 DELIVERED LUMENS: 685LMs  
 SYSTEM WATTS: 10.3W  
 EFFICACY: 66LPW  
 CRI: 90+  
 CCT: 3000K

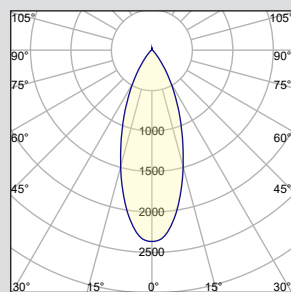
#### 90D - 90° BEAM ANGLE



#### 3G-RC1M5-DW-12-H90-90D

LUMEN OUTPUT: 1200LMs  
 DELIVERED LUMENS: 1054LMs  
 SYSTEM WATTS: 15.4W  
 EFFICACY: 68LPW  
 CRI: 90+  
 CCT: 3000K

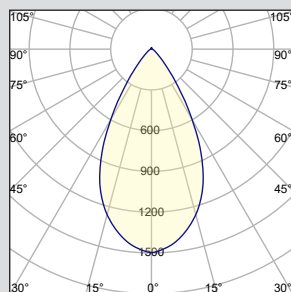
#### 40D - 40° BEAM ANGLE



#### 3G-RC1M5-DW-12-H90-40D

LUMEN OUTPUT: 1200LMs  
 DELIVERED LUMENS: 1113LMs  
 SYSTEM WATTS: 15.4W  
 EFFICACY: 72LPW  
 CRI: 90+  
 CCT: 3000K

#### 60D - 60° BEAM ANGLE



#### 3G-RC1M5-DW-12-H90-60D

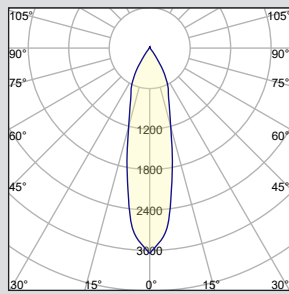
LUMEN OUTPUT: 1200LMs  
 DELIVERED LUMENS: 1145LMs  
 SYSTEM WATTS: 15.4W  
 EFFICACY: 74LPW  
 CRI: 90+  
 CCT: 3000K

### PERFORMANCE CHART BASED ON 60° BEAM ANGLE

TUNABLE WHITE LUMEN OUTPUT	90+ CRI (2700K)			90+ CRI (3500K)			90+ CRI (6500K)		
	DELIVERED LUMENS	SYSTEM WATTS	EFFICACY (LPW)	DELIVERED LUMENS	SYSTEM WATTS	EFFICACY (LPW)	DELIVERED LUMENS	SYSTEM WATTS	EFFICACY (LPW)
<b>800LMs</b>	N/A	N/A	N/A	N/A	N/A	N/A	N/A	N/A	N/A
<b>1200LMs</b>	1076	16.6	65	1127	16.6	68	1266	16.6	76
<b>2000LMs</b>	1523	24.5	62	1558	24.5	64	1824	24.5	74

### PHOTOMETRY

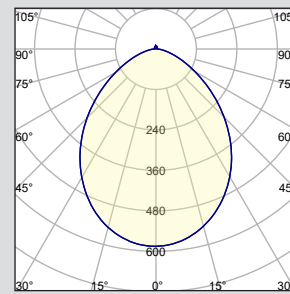
#### 20D - 20° BEAM ANGLE



#### 3G-RC1M5-TW-08-H90-20D

LUMEN OUTPUT: 800LMs  
 DELIVERED LUMENS: 715LMs  
 SYSTEM WATTS: 12.6W  
 EFFICACY: 57LPW  
 CRI: 90+  
 CCT: 3500K

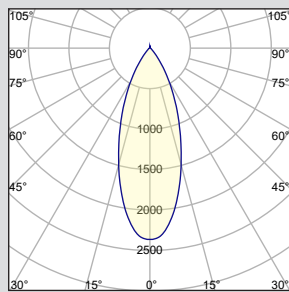
#### 90D - 90° BEAM ANGLE



#### 3G-RC1M5-TW-12-H90-90D

LUMEN OUTPUT: 1200LMs  
 DELIVERED LUMENS: 1037LMs  
 SYSTEM WATTS: 16.6W  
 EFFICACY: 62LPW  
 CRI: 90+  
 CCT: 3500K

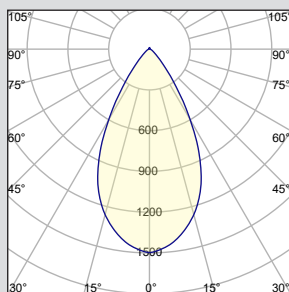
#### 40D - 40° BEAM ANGLE



#### 3G-RC1M5-TW-12-H90-40D

LUMEN OUTPUT: 1200LMs  
 DELIVERED LUMENS: 1121LMs  
 SYSTEM WATTS: 16.6W  
 EFFICACY: 68LPW  
 CRI: 90+  
 CCT: 3500K

#### 60D - 60° BEAM ANGLE



#### 3G-RC1M5-TW-12-H90-60D

LUMEN OUTPUT: 1200LMs  
 DELIVERED LUMENS: 1127LMs  
 SYSTEM WATTS: 24.5W  
 EFFICACY: 68LPW  
 CRI: 90+  
 CCT: 3500K

**TECHNICAL****HOUSING**

New construction, shallow housing and IC housing options available  
Housing fabricated in cold rolled steel. Standard black powder coated finish  
Maximum ceiling thickness of 1". Consult factory for modifications  
All housing options designed to be easily converted in field to trim or trimless with minimal components  
Housings are rated for #12 AWG, (4 in, 4 out), 90°C conductors and through branch wiring

**TRIM**

Features a 3/4" removable trim assembly designed to conceal inner hardware

**TRIMLESS**

Aluminum mudding flange features a unique reveal that emulates drywall  
Integral aluminum blocking support provided to ensure fixture is properly secured within ceiling structure

**ADJUSTABILITY**

Solid aluminum 50mm double gimbal with dual axis adjustability  
Each double gimbal can be locked in place

**OPTICS**

Regressed LED source for enhanced glare control  
Proprietary anodized, aluminum reflectors are field replaceable  
Available in 20°, 40°, 60°, and 90°

**ELECTRICAL**

Standard 0-10V, constant current drivers with 100-1% dimming range and >0.9 power factor  
Standard 120/277V universal voltage drivers. Optional 347V, 0-10V drivers  
120V Forward Phase/Reverse Phase driver option with 100-1% dimming range  
eldoLED 0-10V driver option available with 100-0.01% dimming range  
eldoLED DALI and Lutron EcoSystem driver options available with 100-1% dimming range  
DMX driver option available with 100-0% dimming range  
All drivers are integral and easily accessible through fixture aperture

**LED SYSTEM**

Bridgelux LED module (field replaceable)  
Color consistency <3 SDCM  
Standard 90+ CRI  
Dim to Warm (1800K-3000K)  
Tunable White (2700K-6500K)  
L70 >50,000 hours  
5 Year Warranty

**MOUNTING**

Trim fixture designed for use in drywall, wood, acoustic ceiling tiles, and other architectural ceiling materials  
Trimless fixture designed for use in drywall, mud-in ceiling applications  
Butterfly brackets compatible with 1/2" x 1/2" channel, 1/2", 5/8", 3/4" bar hanger, 1/2" EMT, and furring strips (supplied by others)

**LISTING**

ETL listed and tested to cUL standards. Suitable for dry and damp locations

**WARRANTY**

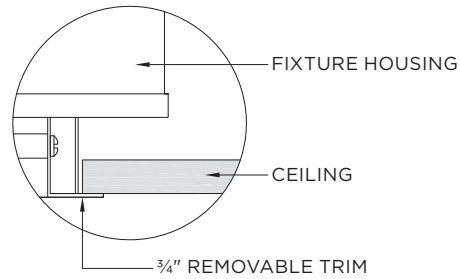
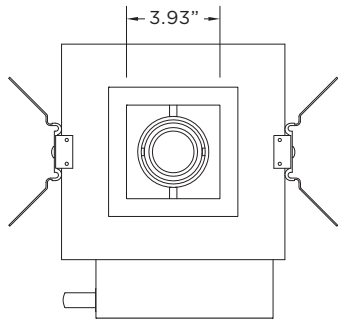
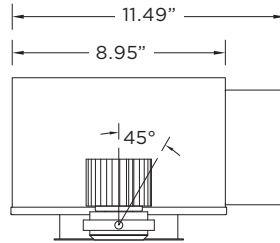
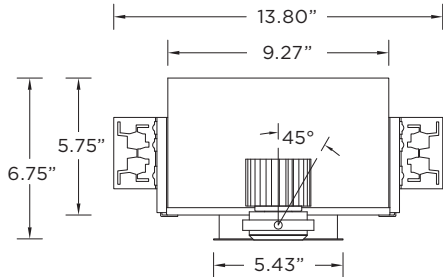
5 Year Warranty on LED and drivers  
Manufacturer 1 Year Warranty for defects in material and workmanship under normal use  
Ambient temperature at fixture should not exceed 25°C

### TRIM HOUSING OPTIONS

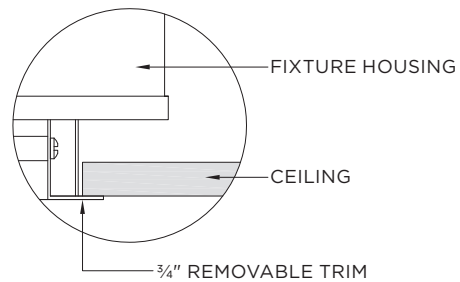
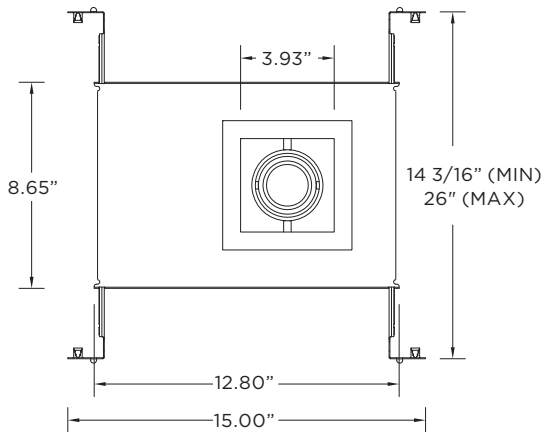
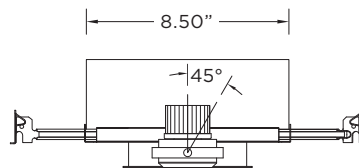
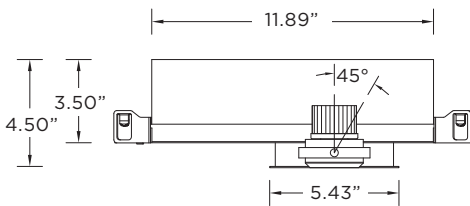
**NC** - New Construction (Non-IC)

**IC** - IC Housing

**CP** - Chicago Plenum Housing

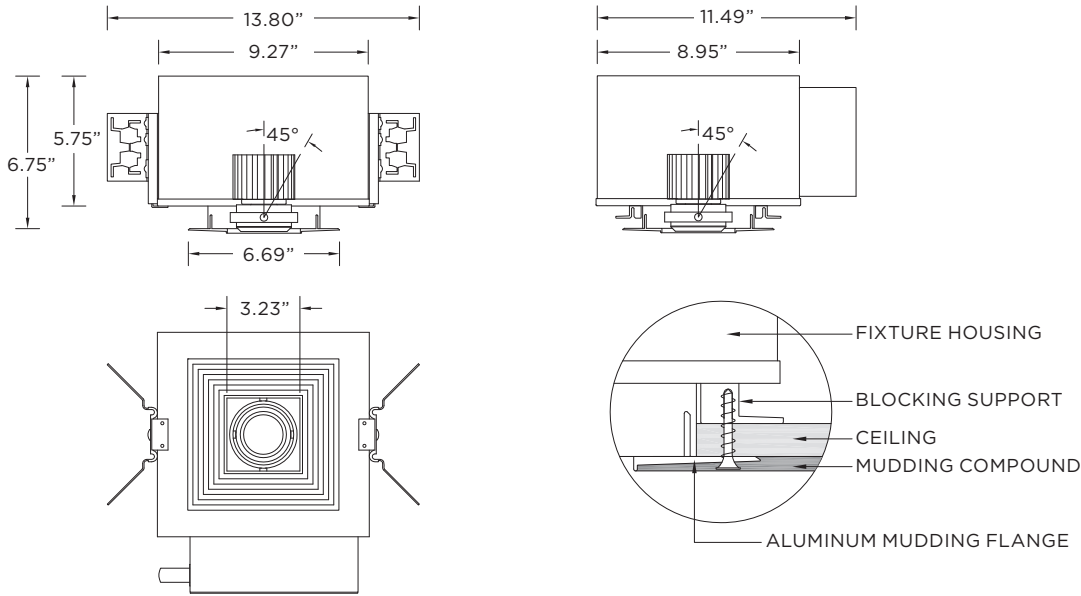


**SH** - Shallow Housing (IC Rated)



**TRIMLESS HOUSING OPTIONS**

- NC** - New Construction (Non-IC)
- IC** - IC Housing
- CP** - Chicago Plenum Housing



**SH** - Shallow Housing (IC rated)

