



## 3G-DL45RWW

4.5" ROUND WALL WASH  
DOWNLIGHT  
DYNAMIC WHITE

4.5" round, high performance dynamic white wall wash downlight  
Dim to Warm and Tunable White LED options up to 2000lm (90+ CRI)  
Regressed LED source for enhanced glare control  
Proprietary wall wash optic and lens  
Remodel housing available along with other housing options  
1% dimming standard with several integral driver options



**3GD** **3GT**

### ORDERING INFORMATION

<b>PROJECT:</b>	<input type="text"/>	<b>TYPE:</b>	<input type="text"/>
<b>CATALOG #:</b>	<input type="text"/>	<b>DATE:</b>	<input type="text"/>

CAT. NO	LED SOURCE	LUMEN OUTPUT	CRI	BEAM ANGLE	VOLTAGE
<b>3G-DL45RWW</b>	<b>DW</b> - DIM TO WARM (1800-3000K) <b>TW</b> - TUNABLE WHITE <sup>1,2</sup> (2700K-6500K)	<b>12</b> - 1200 LUMENS <b>20</b> - 2000 LUMENS	<b>H90</b> - 90+ CRI	<b>WW</b> - WALL WASH	<b>UNV</b> - 120/277V <b>120</b> - 120V <b>347</b> - 347V (0-10V ONLY)

DRIVER	FLANGE TYPE	BEVELED INSERT	HOUSING TYPE
<b>DIM</b> - 0-10V (STANDARD 100-1%) <b>LE</b> - PHASE DIMMING <sup>3</sup> (TRIAC/ELV, 100-1%) <b>LTEA</b> - LUTRON HI-LUME LTEA <sup>3</sup> (FWD PHASE, 100-1%) <b>D01</b> - 0-10V (100-0.1%) <sup>1</sup> <b>DALI</b> - DALI (100-0.1%) <sup>1</sup> <b>DHL2</b> - LUTRON HI LUME LDE1 (1% ECOSYSTEM) <b>DMX</b> - DMX (100-0.1%) <sup>1</sup>	<b>WT</b> - WHITE TRIM <b>BT</b> - BLACK TRIM <b>ST</b> - SILVER TRIM <b>XTR</b> - TRIMLESS <b>MWF</b> - FLANGLESS (MILLWORK) <b>MWF</b> - FLANGLESS (MILLWORK)	<b>WI</b> - WHITE <b>SI</b> - SILVER <b>BI</b> - BLACK	<b>RMD</b> - REMODEL (NON-IC) <b>NCF</b> - NEW CONSTRUCTION FRAME (NON-IC) <b>NC</b> - NEW CONSTRUCTION HOUSING (CP RATED) <b>IC</b> - NEW CONSTRUCTION IC HOUSING

OPTIONS	
<b>CP</b> - CHICAGO PLENUM <sup>4</sup> <b>BH</b> - C-CHANNEL BAR HANGERS <b>EMR</b> - EMERGENCY BATTERY (REMOTE) <sup>5</sup>	

- <sup>1</sup> Tunable White option available with D01, DALI and DMX drivers  
<sup>2</sup> Tunable White option not available with Remodel and New Construction Frame Housing  
<sup>3</sup> Phase dimming options available in 120V only  
<sup>4</sup> Chicago Plenum option available with New Construction Housing  
<sup>5</sup> Emergency battery installed remotely by others. Not accessible through the inside of the fixture

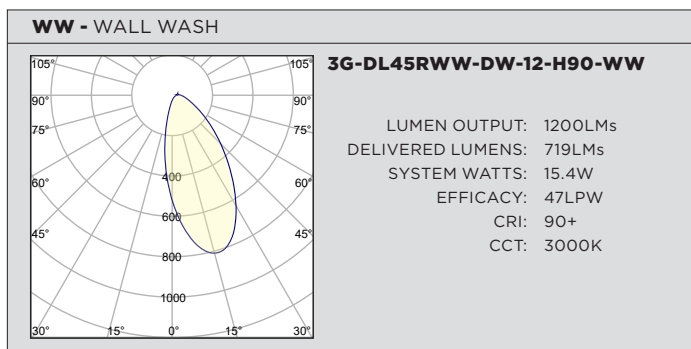
**3GD** - Warm Dim  
**3GT** - Tunable White

APRIL 22, 2021

### PERFORMANCE CHART BASED ON WALL WASH OPTIC AND 3000K SOURCE

DIM TO WARM LUMEN OUTPUT	90+ CRI (3000K)		
	DELIVERED LUMENS	SYSTEM WATTS	EFFICACY (LPW)
1200LMs	719	15.4	47
2000LMs	1022	23.2	44

### PHOTOMETRY

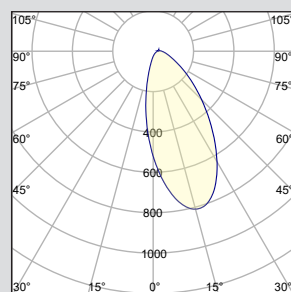


### PERFORMANCE CHART BASED ON WALL WASH OPTIC

TUNABLE WHITE LUMEN OUTPUT	90+ CRI (2700K)			90+ CRI (3500K)			90+ CRI (6500K)		
	DELIVERED LUMENS	SYSTEM WATTS	EFFICACY (LPW)	DELIVERED LUMENS	SYSTEM WATTS	EFFICACY (LPW)	DELIVERED LUMENS	SYSTEM WATTS	EFFICACY (LPW)
1200LMs	652	16.6	39	692	16.6	42	756	16.6	46
2000LMs	939	24.5	38	993	24.5	41	1090	24.5	44

### PHOTOMETRY

#### WW - WALL WASH



#### 3G-DL45RWW-TW-12-H90-WW

LUMEN OUTPUT: 1200LMs  
 DELIVERED LUMENS: 692LMs  
 SYSTEM WATTS: 16.6W  
 EFFICACY: 42LPW  
 CRI: 90+  
 CCT: 3500K

**TECHNICAL****HOUSING**

Remodel, new construction frame, shallow housing, and IC housing options available  
Maximum ceiling thickness of 1" (1.5" for Remodel housing). Consult factory for modifications  
All housing options designed to be easily converted in field to trim or trimless with minimal components  
Housing rated for #12 AWG (4 in, 4 out), 90°C conductors and through branch wiring

**BEVELED INSERT**

Cast aluminum beveled insert with matte powder coated finish  
4.5" aperture with regressed LED source for enhanced glare control

**TRIM**

Machined aluminum trim flange with matte powder coated finish and minimal 0.375" overlap

**TRIMLESS**

Mudding flange features a perforated surface for easy mud-in application  
Integral blocking support provided to ensure fixture is properly secured within ceiling structure

**OPTICS**

Regressed LED source for enhanced glare control  
Proprietary wall wash optic  
Asymmetrical lens provides uniformity and smooth illumination across and down the wall

**ELECTRICAL**

Standard 0-10V, constant current drivers with 100-1% dimming range and >0.9 power factor  
Standard 120/277V universal voltage drivers. Optional 347V, 0-10V drivers  
120V Forward Phase/Reverse Phase driver option with 100-1% dimming range  
eldoLED 0-10V driver option available with 100-0.01% dimming range  
eldoLED DALI and Lutron EcoSystem driver options available with 100-1% dimming range  
DMX driver option available with 100-0% dimming range  
All drivers are integral and easily accessible through fixture aperture

**LED SYSTEM**

Bridgelux LED module (field replaceable)  
Color consistency <3 SDCM  
Standard 90+ CRI  
Dim to Warm (1800K-3000K)  
Tunable White (2700K-6500K)  
L70 >50,000 hours  
5 Year Warranty

**MOUNTING**

Trim fixture designed for use in drywall, wood, acoustic, and other architectural ceilings  
Trimless fixture designed for use in drywall, mud-in ceiling applications  
Recommended ceiling cut-out for all housing options (4 5/8" diameter)  
New construction frame ships with bar hangers (14" to 26" extension)  
Standard new construction and IC housings available with optional c-channel bar hangers

**LISTING**

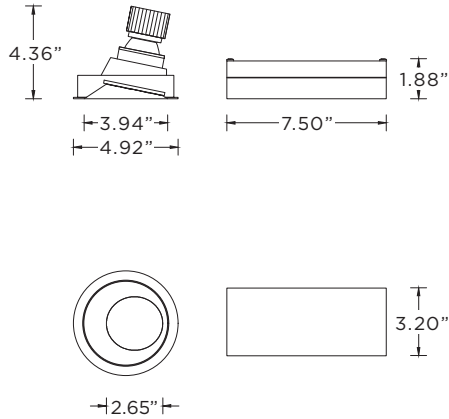
ETL listed and tested to cUL standards. Suitable for dry and damp locations

**WARRANTY**

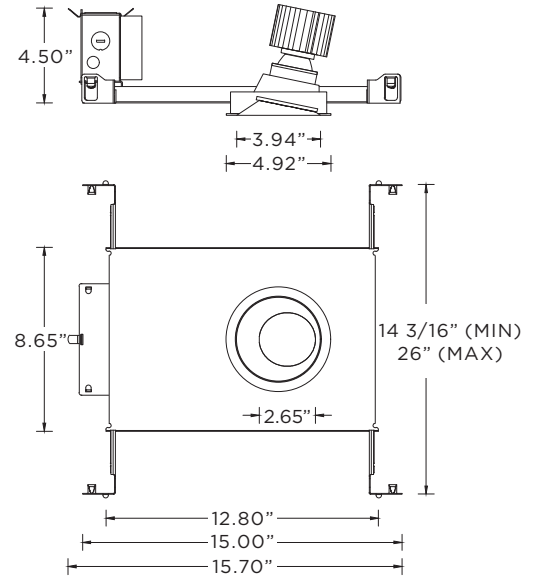
5 Year Warranty on LED and drivers  
Manufacturer 1 Year Warranty for defects in material and workmanship under normal use  
Ambient temperature at fixture should not exceed 25°C

**TRIM HOUSING OPTIONS**

**RMD - Remodel (Non-IC)**

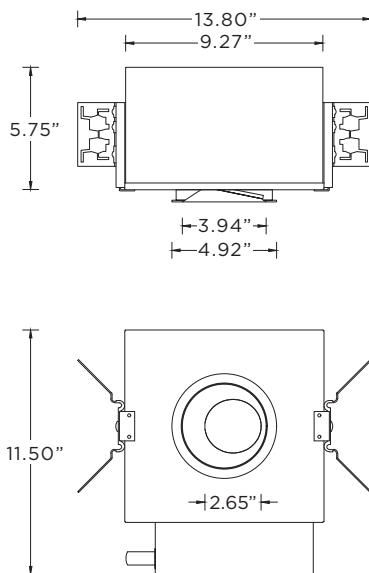


**NCF - New Construction Frame (Non-IC)**



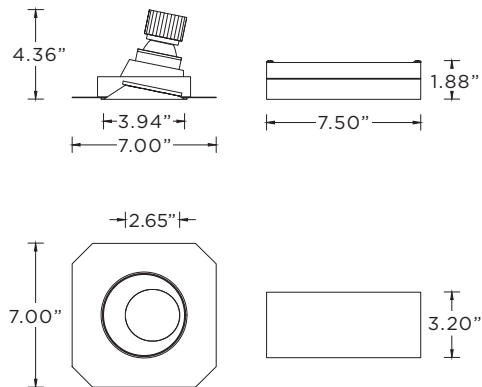
**NC - New Construction Housing (Non-IC and CP rated)**

**IC - New Construction IC Housing**

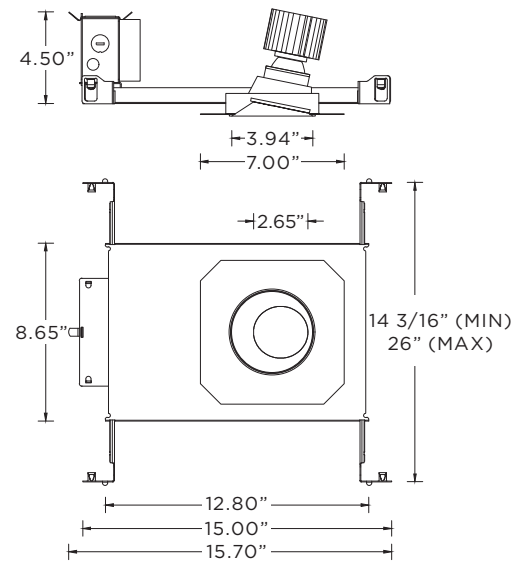


**TRIMLESS HOUSING OPTIONS**

**RMD - Remodel (Non-IC)**

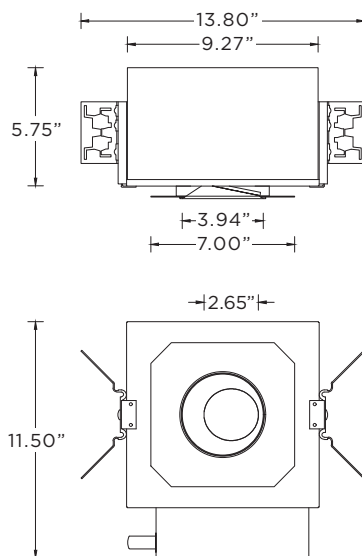


**NCF - New Construction Frame (Non-IC)**



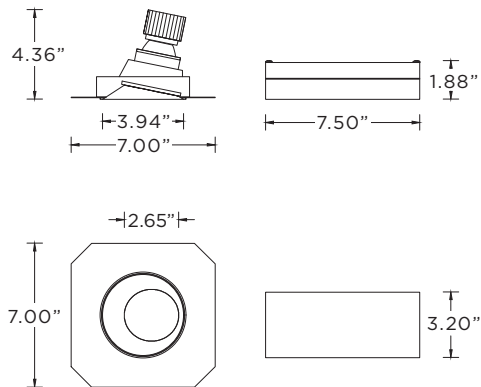
**NC - New Construction Housing (Non-IC and CP rated)**

**IC - New Construction IC Housing**

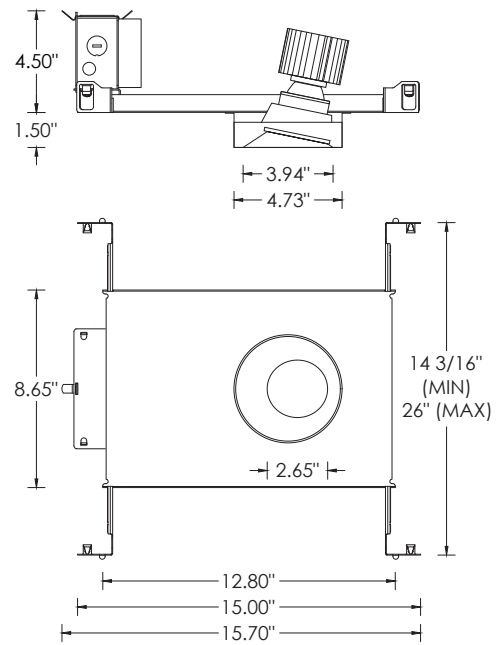


### FLANGLESS MILLWORK OPTIONS

#### RMD - Remodel (Non-IC)



#### NCF - New Construction Frame (Non-IC)



#### NC - New Construction Housing (Non-IC and CP rated)

#### IC - New Construction IC Housing (2200lm max)

