

Uno linear indirect

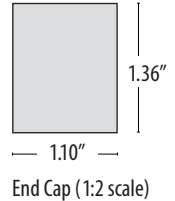
indirect linear LED pendant with white acrylic lens



CONSTRUCTION

- Aluminum extrusion with a matte anodized finish.
- White indirect DR acrylic frosted lens.
- Suspended with field-adjustable aircraft cable, with push-button glider.
- 8 ft. 18 AWG power cord. Each module requires its own power feed. Specify **XP** for additional length. (25 ft. maximum.)
- Default finish/power cord pairings are silver/gray, white/white, black/black.

- For RAL colors, power cord color must be specified.
- For differing fixture/canopy colors, please consult factory.
- Drivers and DMX module remotely installed in surface mount housing. For remote driver installation, see p. 2.
- Drivers are universal voltage (120–277V).
- cUL listed for dry and damp locations only.



TYPE:	PROJECT:
ORDER NUMBER:	

MODEL#	LENGTH	FINISH	LEDS	DIMMING	OPTIONS		
UiLP-indirect pendant	2-2 ft. 3-3 ft. 4-4 ft. 5-5 ft. 6-6 ft. 8-8 ft. Enter Run Length (ft.)	S-Silver W-White K-Black CC-RAL Color*	BW-Barn Wood CB-Carbon Fiber ES-Espresso HO-Honey Oak M-Maple SD-Silver Driftwood	DC-Dark Cherry TL-Tan Leather KL-Khaki Leather	W30 W35 W40 RGBW-color + 3500° K white	D-Standard BDIM-W11 DMX DA-DALI DPH-Phase (120V only)	SLRD SLRDTB S100P EM

Example:

ULiP	12-ft.	S	W35	D	SLRD
------	--------	---	-----	---	------

BDMXCON-W-white faceplate (enter quantity):	XP-Extra power cord (in inches, 25 ft. max.):
BDMXCON-B-black faceplate (enter quantity):	Specify canopy finish (silver, white, black):
EB-Earthquake Bracing Kit (enter quantity):	Specify power cord color (gray, white, black):
XL-custom lumen reduction (specify lumens):	*Specify RAL color number:

UiLP – Pendant

Individual Modules & Continuous Runs, **SLRD** Mount



NOMINAL	X=ACTUAL
2 ft.	23.75"
3 ft.	35.13"
4 ft.	46.50"
5 ft.	57.90"
6 ft.	69.25"
8 ft.	92.00"

NOTE: overall length. Delray will configure the run utilizing the longest standard module lengths. For specific module lengths and power feed placements, please consult factory.

Uno linear indirect

indirect linear LED pendant with white acrylic lens



WHITE LEDS

Nichia Corp. NFSL757 linear board chips. 90 CRI. Specify color: **W30**–3000° Kelvin, **W35**–3500° Kelvin, or **W40**–4000° Kelvin.

CUSTOM LUMEN OUTPUT REDUCTION

Factory set custom reduced-lumen output driver configuration. Order **XL**. Specify lumens.

COLOR LEDS

RGBW with 3500° K white. Includes RGBW interface. Optional DMX controller also available. (See below. right.)

WATTS / LUMENS

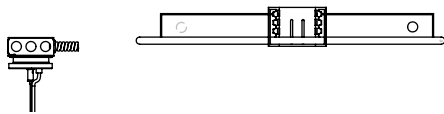
LENGTH Nominal (Actual)	WATTS		DELIVERED LUMENS	
	White	RGBW	White	RGBW
2 ft. (23.75 in.)	10	6	866	N/A
3 ft. (35.13 in.)	15	9	1,293	N/A
4 ft. (46.50 in.)	20	12	1,733	N/A
5 ft. (57.90 in.)	25	15	2,159	N/A
6 ft. (69.25 in.)	30	18	2,585	N/A
8 ft. (92.00 in.)	40	24	3,465	N/A

REMOTE DRIVERS

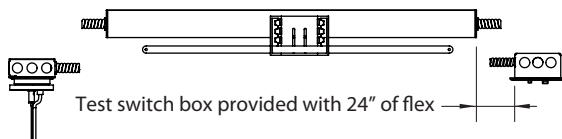
Drivers must be accessible after installation. Multiple driver housings must be mounted no closer than 4" apart side-by-side, or 1" apart end-to-end, to avoid overheating. Driver to canopy distance should not exceed 100 ft., using 10 AWG wire.

SLRD: Standard remote housing has no bar hangers and mounts to structure with screws. Dimensions: 24" length, 2.36" height, 2.65" width.

SLRDTB: Remote housing for T-bar ceiling includes bar hangers. Dimensions: 27" length, 3.4" height, 4.25" width.



EM/SLRDTB: Remote **EM** housing for T-bar ceiling includes bar hangers and remote test switch. Dimensions: 36" length, 3.4" height, 4.25" width. Provides 10W for 90 minutes.

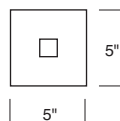


DRIVER HOUSING DIMENSIONS

Standard: 16" x 2.36"
Standard **EM**: 35.50" x 1.90"

OPTIONAL J-BOX COVER

Cover plate mounts to maximum 4" square J-box. Ballast housing mounts to wall on top of cover plate, which may be painted to match ceiling or wall, and includes two mounting spacers to offset cover thickness. Order **S100P**.

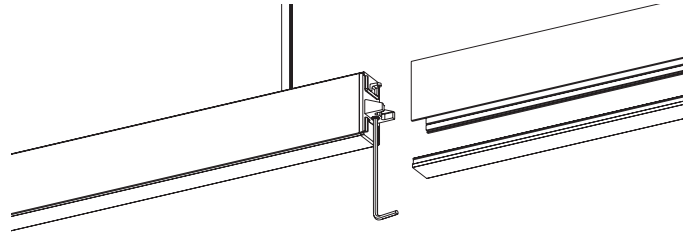


DIMMING

- **D**–standard supplied driver. 0–10V, programmable, 1% dimming, 120–277V, 50/60 Hz.
- **BDIM-W11**–Lutron EcoSystem LED14 Series, 120–277V, 1% dimming, fade-to-off.
- **DPH**–Triac and ELV 1% dimming at 120V 60 Hz only.
- **DA**–DALI 1% dimming, fade-to-off. 120–277V, 50/60 Hz.
- **DMX**–for both white and RGBW LEDs, 0.1% dimming fade-to-off. 120–277V, 50/60Hz.

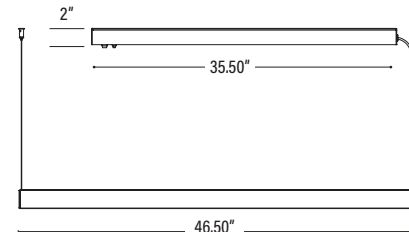
CONTINUOUS MOUNT

Continuous runs include joiner **UJ**.



EMERGENCY

For 4' through 8' fixtures only. Battery pack provides 10W for 90 minutes. Adds additional length to driver housing.



OPTIONAL DMX CONTROLLER

- Standalone, wall-mounted DMX controller for RGBW LED that provides direct access to fixtures. Power supply included.
 - Tune color hue with sensitive wheel. Saturation and brightness control. On/off switch.
 - See <https://www.nicolaudie.com/en/stick-cw4.htm> for details.
- Order separately, either **BDMXCON-W**–white faceplate or **BDMXCON-B**–black faceplate.

AIRCRAFT CABLE

NOTE: Not recommended for outdoor use, where fixture will be exposed to water, or subject to wind oscillation. Avoid use near HVAC vents and in environments with corrosive chemical vapors, such as swimming pools.

ACRYLIC DIFFUSER CLEANING




WARNING: Do not clean with ammonia based cleaners (e.g. Windex®). Use only water or cleaners specifically formulated for cleaning plastics.

Uno linear indirect

indirect linear LED pendant with white acrylic lens



PAINT FINISHES

SWATCH	FINISH NO.
	S -Silver
	W -white
	K -Black

TEXTURED FINISHES

SWATCH	FINISH NO.
	BW -Barnwood
	CB -Carbon Fiber
	ES -Espresso
	HO -Honey Oak
	M -Maple
	SD -Silver Driftwood

PREMIUM TEXTURED FINISHES

SWATCH	FINISH NO.
	DC -Dark Cherry
	TL -Tan Leather
	KL -Khaki Leather

TEXTURED FINISHES - CANOPY AND POWER CORD COLORS

Specify Silver, White, Black or RAL color for canopy. Also specify Gray, White or Black power cord.