



a brand of TARGETTI

DURATAPE™ ULTRA HD RGB

IP65 OUTDOOR

KEY FEATURES

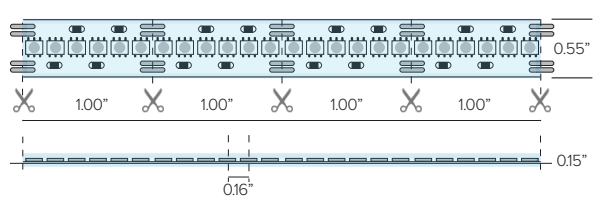
- The most powerful RGB strip in the range! DURATAPE ULTRA HD RGB features tighter spacing LED sources with no pixelization to achieve shadowless light effects in a dynamic RGB source.
- Ideal for applications with reflective surfaces / direct view with use of profile and diffusion lens or OEM panel illumination.
- Sold per foot and manufactured to specified lengths with factory attached end preps.
- Features double sided substrate for optimum heat dissipation, minimizing voltage drop while increasing run lengths per power feed, standardizing electrical flow over entire length of the strip for maximum product reliability.
- Features double sided solder points for maximum conductivity and durability.
- Pre-assembled to specific lengths with various connector options for project requirements and efficient power configuration.
- Max continuous length: up to 16' per run
- Multiple DMX512 drivers solutions available.



DETAILS

Spacing	0.16" OC LED Spacing
LEDs	73 LEDs per foot
Wattage	4.2W/ft
Color Temp	Tri Chip: Red 620nm / Green 525nm / Blue 470nm
Color Consistency	Bin centered on the Planck curve with a 2 step MacAdam tolerance.
End Preps	Factory preped end preps available (See Page 2)
Mounting	Includes installation-ready 3M tape adhesive for simplified installation directly to mounting channel or application surface
Installation	Optional aluminum channels with base and cover can be used to install decorative, protective covers
Power Supply	Listed Class 2 output, 24V DC power supply required
Listing	cULus Class 2 Listed E471161 Tested in accordance with LM-79-08 Energy efficient for California installations.
Compliance	ROHS compliant MRI Safe, driver to be mounted outside of MRI room. To be used with plastic or aluminum profiles only. To be installed with adhesive or MRI safe hardware only, no factory provided mounting hardware to be used.
Warranty	5 year warranty

DIMENSIONAL DRAWINGS



STRIP DATA

Model	Efficacy Lm/Wt	Lm/Ft	Wt/Ft
Red	8.0	33.5	4.2
Green	30.5	128	4.2
Blue	6.5	27.4	4.2
RGB	45.0	189	4.2

LED DATA

Model	Wt/LED	Viewing Angle	Lifespan at 90% drive
RGB	0.58	120°	40,000hrs

* LEDs operating at 90% of LED manufacturers maximum current rating.

* Meets Title 24 High efficacy rating.

DESIGN INSTALLATION EXAMPLES



PRODUCT CODE	INTENSITY	WATTAGE	IP RATING	LED COLOR	VOLTAGE	+	END PREP	+	MOUNTING	+	POWER SUPPLY
--------------	-----------	---------	-----------	-----------	---------	---	----------	---	----------	---	--------------

DL—Duratape™ UH — Ultra HD 42 — 4.2 W/ft O — Outdoor IP65 RGB — RGB 24 — 24 VDC

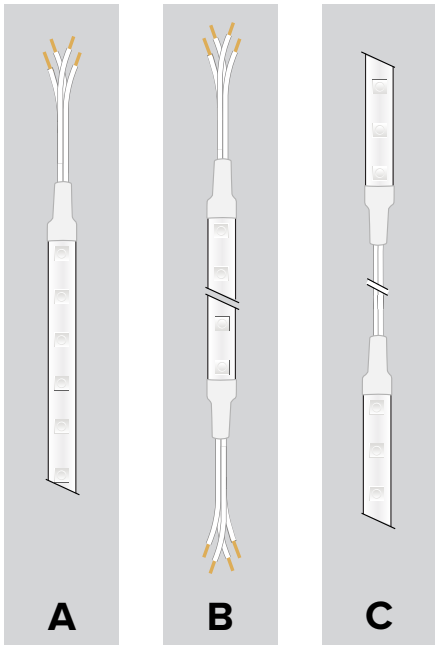


a brand of TARGETTI

DURATAPE™ ULTRA HD RGB

IP65 OUTDOOR

END PREPS AND CONNECTORS (REQUIRED) - Choose 1



REQUIRED END PREPS: (One required for each run of tape)

A

07UX3CBL1 (3-circuit RGB)

Factory attached single 3 circuit lead wire prep. 24" four conductor Lead wire/dead end allows for connection to power at lead end and field trim of Duratape product at the other end.

07UX3ADDCBL: ADDITIONAL LEAD WIRE

(3-circuit RGB)

Additional lead wire purchased per foot and factory attached to specified run leads. Lead wire can be field cut to desired length.

B

07UX3CBL2 (3-circuit RGB)

Factory attached double ended 3 circuit lead wire prep. 24" four conductor lead wire at both ends. One end can be used for power connectivity while the other end can be used for interconnection to run to an additional length of Duratape.

07UX3ADDCBL: ADDITIONAL LEAD WIRE

(3-circuit RGB)

Single 3 circuit lead wire prep. 24" four conductor Lead wire/dead end allows for connection to power at lead end and field trim of Duratape product at the other end.

C

07UX3FOLD CBL-XX (3-circuit RGB)

3 circuit wire fold (specified length). Wire folds are factory attached to Duratape to meet your specified installation requirements. Wire fold lengths available are 2", 3", 4", 6", 12". Add length number to end of part number.

OPTIONAL CONNECTORS:

D

07UX3ADDCON (3-circuit RGB)

Additional 3 circuit connectors. Lead wire connectors 3/ea per connection.



a brand of TARGETTI

DURATAPE™ ULTRA HD RGB

IP65 OUTDOOR

PROFILE OPACITY LEVEL KEY:



Uniform
Direct View

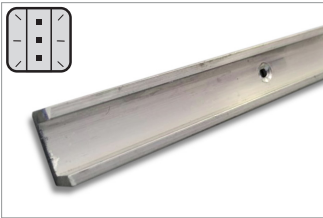


Blended
Direct / Indirect View



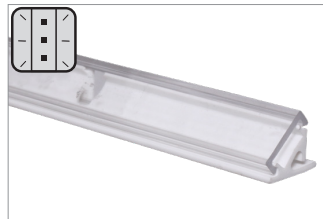
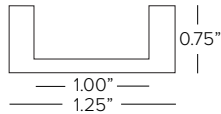
Pixelated
Indirect View

SURFACE PROFILES



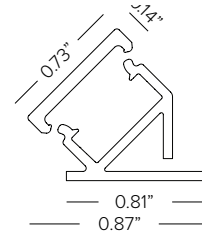
DL-88-ALUM-U-8

Aluminum U-Channel for linear run lengths with factory drilled countersunk screw holes at 6" OC. Available in 8ft lengths.



DL-C-45-MCH-4 (Base, REQUIRED)
45° mounting base (white) for 45° mounted linear applications. Available in 4' lengths.

DL-C-45-CVR-4-C (Cover, Clear)
DL-C-45-CVR-4-F10/F30/F60 (Cover, Frosted)
45° mounting base cover. Available in 4' lengths.



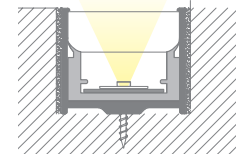
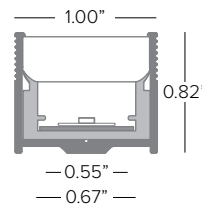
PRINTC-G

Rigid high impact resistant PMMA profile complete with a white plastic diffuser lensed channel for recessed walk over installation. Complete with track for easy strip insertion. Available in 3.28ft (1M) lengths.



KTPRINTC-G

2+2 PC end caps



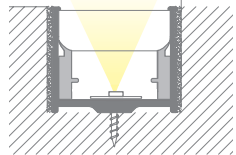
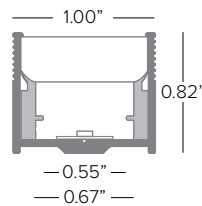
PRINTC-GUS

Rigid high impact resistant PMMA profile complete with two part white plastic diffuser lens and aluminum channel for surface or recessed mounting. Available in 3.28ft (1M) lengths.



KTPRINTC-G

2+2 PC end caps





a brand of TARGETTI

DURATAPE™ ULTRA HD RGB

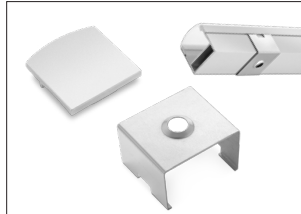
IP65 OUTDOOR

SURFACE PROFILES CONT.



PRAP-U

Surface mount aluminum profile. Anodized aluminum rigid profile complete with opal translucent diffuser cover. Available in 79in (2M) lengths.



KTRAP-UEC

5 + 5 silver color end caps

KTRU-CL

5 sets of clips

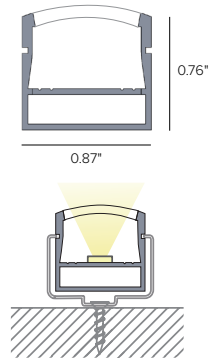


OR-DEV

Set of steel supports required with use of KTORDEV-U.

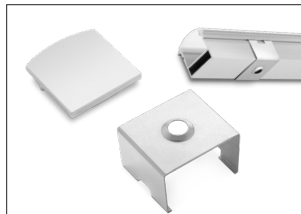
KTORDEV-U

Set of aluminum mounting heads required with use of OR-DEV.



PRIN-U

Flush mount aluminum profile. Anodized aluminum rigid profile complete with opal translucent diffuser cover. Available in 79in (2M) lengths.

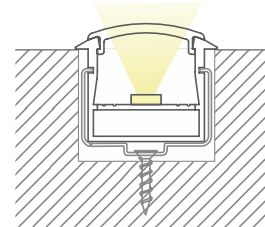
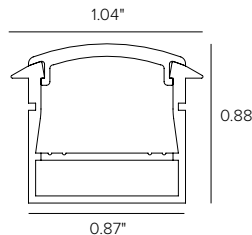


KTRIN-UEC

5 + 5 silver color end caps

KTRU-CL

5 sets of clips



PRAN-U

45° aluminum profile. Anodized aluminum rigid profile complete with opal translucent diffuser cover. Available in 79in (2M) lengths.

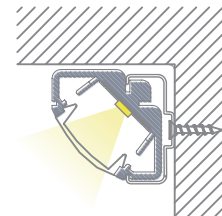
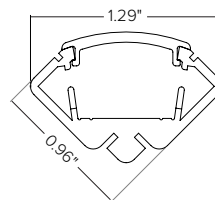


KTRAN-UEC

5 + 5 silver color end caps

KTRAN-UCL

5 sets of clips





a brand of TARGETTI

DURATAPE™ ULTRA HD RGB IP65 OUTDOOR

Power Supply (REQUIRED)	Type	Wattage	Input/Output Voltage	Dimmable	IP Rating	Output	Dimensions
DEDDX1001243CDMX	ELECTRONIC ADDRESSABLE DMX DRIVER	100W	120-277V / 24V	DMX CONTROL 3 CHANNEL	NEMA3R ENCLOSURE	UL CLASS 2	12" x 12" x 4" ¹
DEDDX2002243CDMX	ELECTRONIC ADDRESSABLE DMX DRIVER	2X100W	120-277V / 24V	DMX CONTROL 3 CHANNEL	NEMA3R ENCLOSURE	UL CLASS 2	12" x 12" x 4" ¹

¹ Dimensions include enclosure with mounting bracket.

* Constant voltage drivers 50/60HZ, voltage regulated with short circuit protection. Operating temperature -40 C- 80° C

* Installation of power supply must be compliant to Class 2 installation standards. Refer to NEC and local building code requirements.

MAXIMUM INTERCONNECTED TAPE LENGTH PER

Fixture Wattage	Driver Wattage	
	100W	2X100
4.2W/ft	19FT	(2) 19FT

Controller (Optional)	Type	Application	Voltage	Listing	Dimensions	# Ouput Channels	Number of Zones	Number of Scenes
SWITCH20	RGBW Touch DMX512 Wall Control Panel with Sensitive Glass Touch Panel, White Finish	Indoor Only	12-24V DC	UL	4.73"H x 2.95"W x 1.15"D	12	3	1
TGDMXSLESAU9	Stand-alone DMX 1/2 Universe Programmable Controller with Easy to Use Software Interface	Indoor Only	5.5V DC	ETL, UL	5.3"W x 5.5"H x 1.9D	256	1	20



SWITCH20



TGDMXSLESAU9



a brand of TARGETTI

DURATAPE™ ULTRA HD RGB

IP65 OUTDOOR

PHOTOMETRY

DURATAPE ULTRA HD RGB					POLAR GRAPH
Fixture Power	4.2W	4.2W	4.2W	4.2W	
Fixture Output	33.5Lm	128Lm	27.4Lm	189Lm	
Kelvin Temp	Red	Green	Blue	RGB	
Beam Spread	120°	120°	120°	120°	
IMax	316cd/klm	316cd/klm	316cd/klm	316cd/klm	
Efficacy	8.0 Lm/W	30.5 Lm/W	6.5 Lm/W	45.0 Lm/W	