



a brand of TARGETTI

DURATAPE™ RGBW PIXEL CONTROL

OUTDOOR IP66

KEY FEATURES

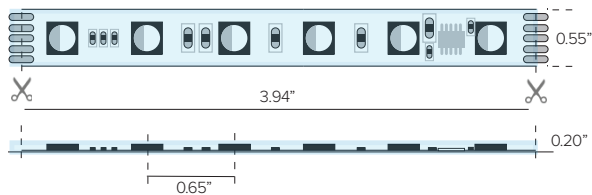
- DURATAPE PIXEL CONTROL allows each LED segment (4in or 6 quad chip LED's) to be independently controlled to create dynamic effects and lighting solutions.
- Sold per foot and manufactured to specified lengths with factory attached end preps.
- Features double sided substrate for optimum heat dissipation, minimizing voltage drop while increasing run lengths per power feed, standardizing electrical flow over entire length of the strip for maximum product reliability.
- Pre-assembled to specific lengths with various connector options for project requirements and efficient power configuration.
- Max continuous length: up to 14' per run
- Multiple DMX driver solutions available.



DETAILS

Spacing	0.65" OC LED Spacing
LEDs	18 LEDs per foot
Wattage	6.0W/ft
Color Temp	Quad Chip; Red: 625nm, Green: 520nm, Blue: 450nm + 3000K
Color Consistency	Bin centered on the Planck curve with a 2 step MacAdam tolerance.
End Preps	Factory prepped end preps available (See Page 2)
Mounting	Includes installation-ready 3M tape adhesive for simplified installation directly to mounting channel or application surface
Installation	Optional mounting channels and clips, protective lens covers, thermal channels and heat transfer tape for optimal maintenance. Field trimmable every 1.31"
Power Supply	Listed Class 2 output, 24V DC DMX power supply required.
Certifications	cULus Wet Listed Tested in accordance with LM-79-08
Compliance	ROHS compliant
Warranty	5 year warranty

DIMENSIONAL DRAWINGS



FIXTURE DATA

Model	Efficacy* Lm/Wt	Lm/Ft	Wt/Ft
RGBW	14.2	85.4	6.0

LED DATA

Model	Wt/LED	Viewing Angle	Lifespan at 90% drive
RGBW 6.0W/ft	0.33W	120°	40,000hrs

* LEDs operating at 90% of LED manufacturers maximum current rating.

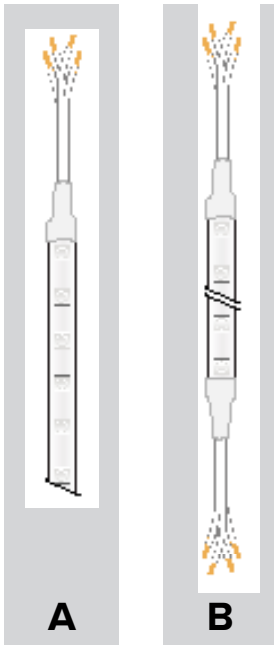
PRODUCT CODE	TYPE	WATTAGE	IP RATING	LED COLOR	VOLTAGE	+	END PREP	+	MOUNTING	+	POWER SUPPLY
DL	Duratape™	PX	Pixel Control	60	6.0 W/ft	O	Outdoor IP66	RGBW	RGBW	24	24VDC



a brand of TARGETTI

DURATAPE™ RGBW PIXEL CONTROL OUTDOOR IP66

END PREPS AND CONNECTORS



REQUIRED END PREPS: (One required for each run of tape)

A

07UXDMX1CBL1: END PREP

Factory attached single lead wire prep two conductor shielded DMX cable and two conductor 18ga power cable. 24" Lead wire/dead end allows for connection to power at lead end and field trim of Duratape product at the other end.

07UXDMX1ADDCBL1-XX: ADDITIONAL LEAD WIRE

Additional lead wire purchased per foot and factory attached to specified run leads. Lead wire can be field cut to desired length.

B

07UXDMX1CBL2: END PREP

Factory attached double ended lead wire prep two conductor shielded DMX cable and two conductor 18ga power cable. 24" lead wire at both ends. One end can be used for power connectivity while the other end can be used for interconnection to run to an additional length of Duratape. **Caution: Pay attention to max run lengths and voltage drops from total lead/fold wire lengths.**

07UXDMX1ADDCBL2-XX: ADDITIONAL LEAD WIRE

Additional lead wire purchased per foot and factory attached to specified run leads. Lead wire can be field cut to desired length.



a brand of TARGETTI

DURATAPE™ RGBW PIXEL CONTROL OUTDOOR IP66

PROFILE OPACITY LEVEL KEY:



Uniform
Direct View

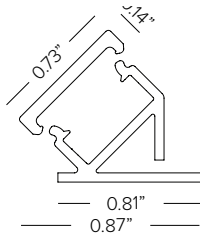
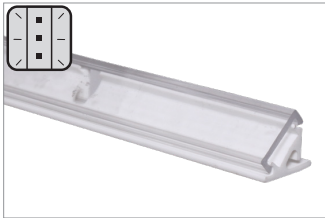


Blended
Direct / Indirect View



Pixelated
Indirect View

SURFACE PROFILES



DL-C-45-MCH-4 (Base, REQUIRED)
45° mounting base (white) for 45° mounted linear applications. Available in 4' lengths.

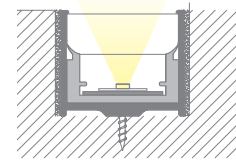
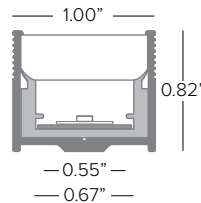
DL-C-45-CVR-4-C (Cover, Clear)
DL-C-45-CVR-4-F10/F30/F60 (Cover, Frosted)
45° mounting base cover. Available in 4' lengths.



PRINTC-G
Rigid high impact resistant PMMA profile complete with a white plastic diffuser lensed channel for recessed walk over installation. Complete with track for easy strip insertion. Available in 3.28ft (1M) lengths.



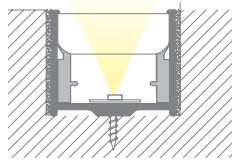
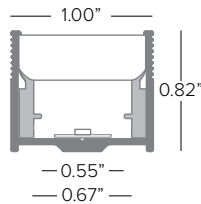
KTPRINTC-G
2+2 PC end caps



PRINTC-GUS
Rigid high impact resistant PMMA profile complete with two part white plastic diffuser lens and aluminum channel for surface or recessed mounting. Available in 3.28ft (1M) lengths.



KTPRINTC-G
2+2 PC end caps





a brand of TARGETTI

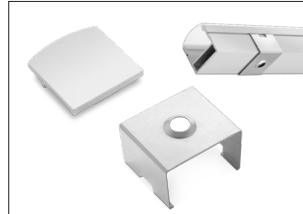
DURATAPE™ RGBW PIXEL CONTROL OUTDOOR IP66

SURFACE PROFILES CONT.



PRAP-U

Surface mount aluminum profile. Anodized aluminum rigid profile complete with opal translucent diffuser cover. Available in 79in (2M) lengths.



KTPRAP-UEC

5 + 5 silver color end caps

KTPRU-CL

5 sets of clips

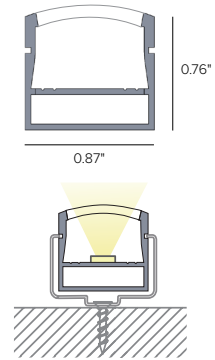


OR-DEV

Set of steel supports required with use of KTORDEV-U.

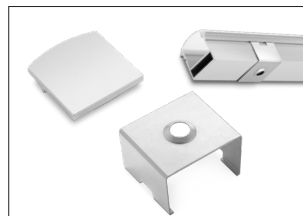
KTORDEV-U

Set of aluminum mounting heads required with use of OR-DEV.



PRIN-U

Flush mount aluminum profile. Anodized aluminum rigid profile complete with opal translucent diffuser cover. Available in 79in (2M) lengths.

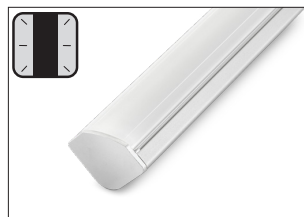
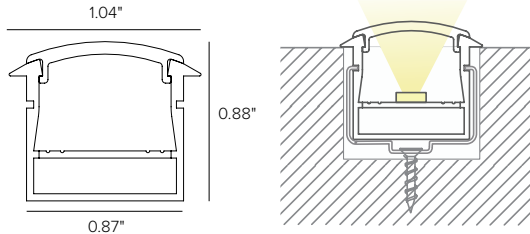


KTPRIN-UEC

5 + 5 silver color end caps

KTPRU-CL

5 sets of clips



PRAN-U

45° aluminum profile. Anodized aluminum rigid profile complete with opal translucent diffuser cover. Available in 79in (2M) lengths.

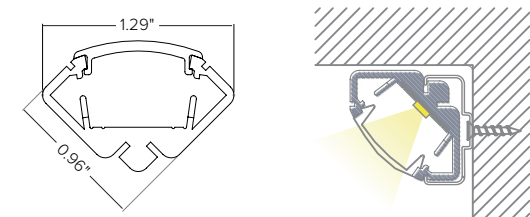


KTPRAN-UEC

5 + 5 silver color end caps

KTPRAN-UCL

5 sets of clips



DURA DURATAPE™ RGBW PIXEL CONTROL OUTDOOR IP66

a brand of TARGETTI LAMP

Power Supply (REQUIRED)	Type	Wattage	Input/Output Voltage	Dimmable	IP Rating	Output	Dimensions
DMLE301242UD	EMCOD MLE-UD ELECTRONIC DRIVER WITH WIRING COMPARTMENT.	30W	120-277V / 24V	FWD / REV PHASE / TRIAC / 0-10V / PWM	NEMA3R ENCLOSURE	UL CLASS 2	4.47" X 6.79" X 1.38"
DMLE601242UD	EMCOD MLE-UD ELECTRONIC DRIVER WITH WIRING COMPARTMENT.	60W	120-277V / 24V	FWD / REV PHASE / TRIAC / 0-10V / PWM	NEMA3R ENCLOSURE	UL CLASS 2	4.47" X 6.79" X 1.38"
DMLE961242UD	EMCOD MLE-UD ELECTRONIC DRIVER WITH WIRING COMPARTMENT.	96W	120-277V / 24V	FWD / REV PHASE / TRIAC / 0-10V / PWM	NEMA3R ENCLOSURE	UL CLASS 2	5.16" X 7.73" X 1.54"
DMLE1922242UD	EMCOD MLE-UD ELECTRONIC DRIVER WITH WIRING COMPARTMENT.	2X96W	120-277V / 24V	FWD / REV PHASE / TRIAC / 0-10V / PWM	NEMA3R ENCLOSURE	UL CLASS 2	5.04" X 10.94" X 1.81"
DMLE2882242UD	EMCOD MLE-UD ELECTRONIC DRIVER WITH WIRING COMPARTMENT.	3X96W	120-277V / 24V	FWD / REV PHASE / TRIAC / 0-10V / PWM	NEMA3R ENCLOSURE	UL CLASS 2	5.04" X 10.94" X 1.81"
DELV30124DJBX	MAGNITUDE SOLIDRIVE ELECTRONIC DRIVER WITH BUILT-IN JUNCTION BOX.	30W	120-277V / 24V	0-10V 1%	IP66	UL CLASS 2	12.1" X 2.36" X 1.4"
DELV30124D	MAGNITUDE SOLIDRIVE ELECTRONIC STANDALONE DRIVER. UL LISTED ENCLOSURE PROVIDED BY OTHERS.	30W	120-277V / 24V	0-10V 1%	IP66	UR CLASS 2	7.5" X 2.36" X 1.4"
DELV60124DJBX	MAGNITUDE SOLIDRIVE ELECTRONIC DRIVER WITH BUILT-IN JUNCTION BOX.	60W	120-277V / 24V	0-10V 1%	IP66	UL CLASS 2	12.1" X 2.36" X 1.4"
DELV60124D	MAGNITUDE SOLIDRIVE ELECTRONIC STANDALONE DRIVER. UL LISTED ENCLOSURE PROVIDED BY OTHERS.	60W	120-277V / 24V	0-10V 1%	IP66	UR CLASS 2	7.5" X 2.36" X 1.4"
DELV96124DJBX	MAGNITUDE SOLIDRIVE ELECTRONIC DRIVER WITH BUILT-IN JUNCTION BOX.	96W	120-277V / 24V	0-10V DIMMING 1%	IP66	UL CLASS 2	12.1" X 2.36" X 1.4"
DELV96124D	MAGNITUDE SOLIDRIVE ELECTRONIC STANDALONE DRIVER. UL LISTED ENCLOSURE PROVIDED BY OTHERS.	96W	120-277V / 24V	0-10V DIMMING 1%	IP66	UR CLASS 2	7.5" X 2.36" X 1.4"

¹ Dimensions include enclosure with mounting bracket.
 * Constant voltage drivers 50/60HZ, voltage regulated with short circuit protection. Operating temperature -40 C- 80° C
 * Installation of power supply must be compliant to Class 2 installation standards. Refer to NEC and local building code requirements.

MAXIMUM INTERCONNECTED TAPE LENGTH PER DRIVER

Fixture Wattage	Driver Wattage							
	30W	60W	96W	90W	2X90W	3X90W	100W	2X100
6W/ft	4FT	8FT	12FT	12FT	(2) 12FT	(3) 12FT	13FT	(2) 13FT

Controller (Optional)	Type	Application	Voltage	Listing	Dimensions	# Ouput Channels	Number of Zones	Number of Scenes
TGDMXSLESAU9	Stand-alone DMX Programmable Controller with Easy to Use Software Interface	Indoor Only	5.5V DC	ETL, UL	5.3"W x 5.5"H x 1.9D	256	1	20



TGDMXSLESAU9



a brand of TARGETTI

DURATAPE™ RGBW PIXEL CONTROL

OUTDOOR IP66

PHOTOMETRY

DURATAPE PIXEL CONTROL		POLAR GRAPH
Fixture Power	6.0W	
Fixture Output	85.4Lm	
Kelvin Temp	RGBW	
Beam Spread	120°	
IMax	316cd/klm	
Efficacy	14.2 Lm/W	