



DURATAPE™ EXTREME TUNABLE

IP20 INDOOR

KEY FEATURES

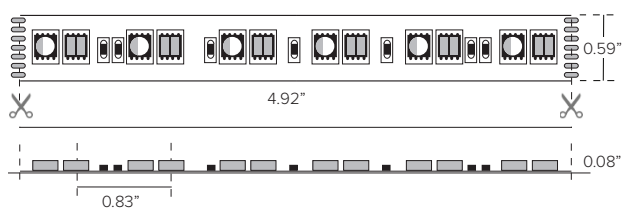
- Color changing strip with both full spectrum RGBA and tunable white CCT all combined in one linear strip!
- DURATAPE EXTREME TUNABLE gives the designer the freedom to choose previously unthinkable shades of light without using complex electronic equipment and create the most diverse and new, pleasant and amazing lighting scenes using just one strip.
- Sold per foot and manufactured to specified lengths with factory attached end preps.
- Features 6-circuit substrate for optimum heat dissipation, minimizing voltage drop while increasing run lengths per power feed, standardizing electrical flow over entire length of the strip for maximum product reliability.
- Pre-assembled to specific lengths with various connector options for project requirements and efficient power configuration.
- Max continuous length: up to 14' per run
- DMX512 drivers options available.



DETAILS

| | |
|--------------------------|--|
| Spacing | 0.83" OC LED Spacing Paired LED Spacing |
| LEDs | 29 LEDs per foot arranged as pairs of multi-colored sets |
| Wattage | 6.9W/ft |
| Color Temp | RGBA (Red 630nm / Green 520nm / Blue 460nm / 1600K Amber) and Tunable CCT 3000K-6500K |
| Color Consistency | Bin centered on the Planck curve with a 2 step MacAdam tolerance. |
| End Preps | Factory prepped end preps available (See Page 2) |
| Mounting | Includes installation-ready 3M tape adhesive for simplified installation directly to mounting channel or application surface |
| Installation | Optional aluminum channels with base and cover can be used to install decorative, protective covers |
| Power Supply | Listed Class 2 output, 24V DC power supply required |
| Listing | cULus Class 2 Listed Tested in accordance with LM-79-08 |
| Compliance | ROHS compliant |
| Warranty | 5 year warranty |

DIMENSIONAL DRAWINGS



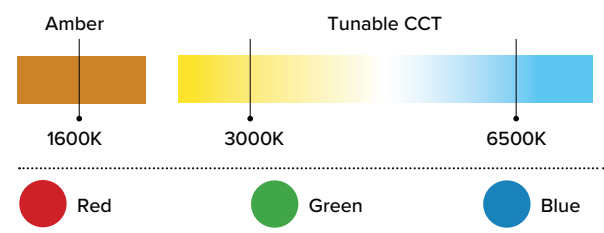
FIXTURE DATA

| Model | Efficacy Lm/Wt | Lm/Ft | Wt/Ft |
|---------------------|-------------------|-------|-------|
| Extreme Tunable CCT | 55 | 381 | 6.9 |

LED DATA

| Model | Wt/LED | Viewing Angle | Lifespan at 90% drive |
|---------------------|--------|---------------|-----------------------|
| Extreme Tunable CCT | 0.24 | 120° | 40,000hrs |

* LEDs operating at 90% of LED manufacturers maximum current rating.



| PRODUCT CODE | TYPE | WATTAGE | IP RATING | LED COLOR | VOLTAGE | + | END PREP | + | MOUNTING | + | POWER SUPPLY |
|--------------|------|---------|-----------|-----------|---------|---|----------|---|----------|---|--------------|
|--------------|------|---------|-----------|-----------|---------|---|----------|---|----------|---|--------------|

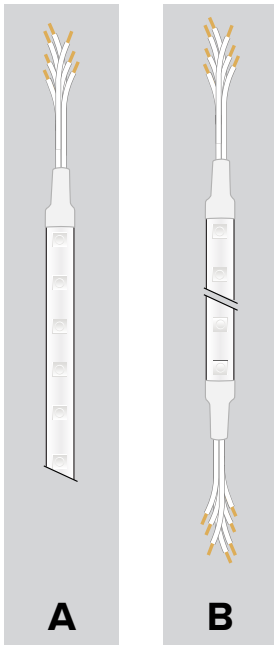
DL—Duratape™ ET — Extreme Tunable CCT 69 — 6.9 W/ft I — Indoor IP20 6C — RGBA + CCT Tunable 3000K–6500K 24 — 24 VDC



DURATAPE™ EXTREME TUNABLE

IP20 INDOOR

END PREPS AND CONNECTORS (REQUIRED) - Choose 1



REQUIRED END PREPS: (One required for each run of tape)

A

07UI6CBL1 (6-circuit RGBA+CCT)

Factory attached single 6 circuit lead wire prep. 24" seven conductor Lead wire/dead end allows for connection to power at lead end and field trim of Duratape product at the other end.

07UI6ADDCBL: ADDITIONAL LEAD WIRE (6-circuit RGBA+CCT)

Additional lead wire purchased per foot and factory attached to specified run leads. Lead wire can be field cut to desired length.

B

07UI6CBL2 (6-circuit RGBA+CCT)

Factory attached double ended 6 circuit lead wire prep. 24" seven conductor lead wire at both ends. One end can be used for power connectivity while the other end can be used for interconnection to run to an additional length of Duratape.

07UI6ADDCBL: ADDITIONAL LEAD WIRE (6-circuit RGBA+CCT)

Additional lead wire purchased per foot and factory attached to specified run leads. Lead wire can be field cut to desired length.



DURATAPE™ EXTREME TUNABLE

IP20 INDOOR

PROFILE OPACITY LEVEL KEY:



Uniform
 Direct View



Blended
 Direct / Indirect View

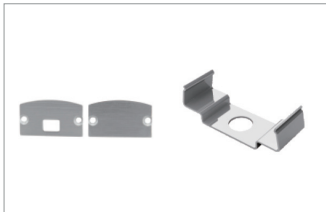


Pixelated
 Indirect View

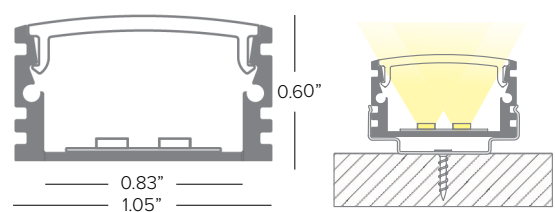
SURFACE PROFILES



P04B-S-PF-300
 Aluminum profile with polycarbonate screen for surface or recessed with suitable clips. Available in 118in (3M) lengths.



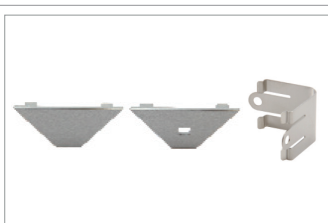
P04B-A-EC
 3+3 pc metal end caps.
P04B-A-MC
 3 Metal mounting clips.



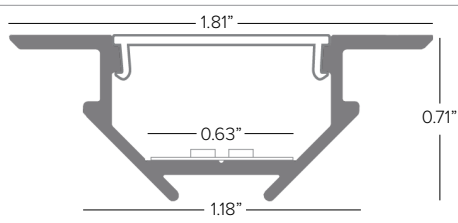
NOTE: 118 inch lengths must be shipped via freight only. For efficient shipping via UPS/Fedex, lengths can be cut to 59 inch upon request.



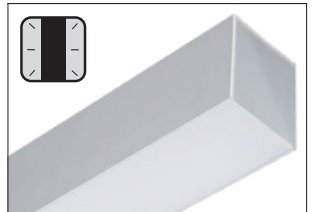
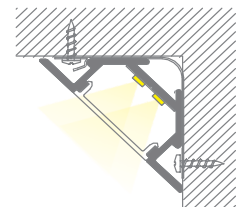
P04F-S-PF-300
 Aluminum profile for surface in 90° angles with suitable clips. Available in 118in (3M) lengths.



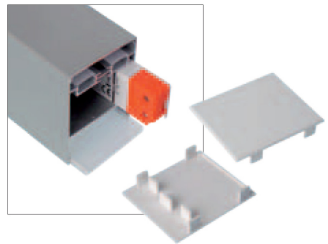
P04F-A-EC
 3+3 pc end caps.
P04F-A-MC
 3 Metal mounting clips.



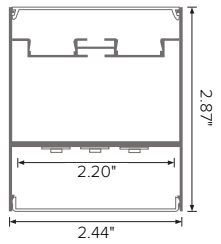
NOTE: 118 inch lengths must be shipped via freight only. For efficient shipping via UPS/Fedex, lengths can be cut to 59 inch upon request.



PRDES0
 Aluminum profile for surface mount. Available in 4ft lengths.
PRDES0-SL
 Rear support for surface mount.



PRDES0-FL
 Front screen in flat opal polycarbonate plate.
KTRDES0-FL
 Set of two side end caps flat screen.





a brand of TARGETTI

DURATAPE™ EXTREME TUNABLE

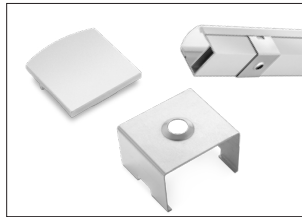
IP20 INDOOR

SURFACE PROFILES CONT.



PRAP-U

Surface mount aluminum profile. Anodized aluminum rigid profile complete with opal translucent diffuser cover. Available in 79in (2M) lengths.



KTRAP-UEC

5 + 5 silver color end caps

KTPRU-CL

5 sets of clips

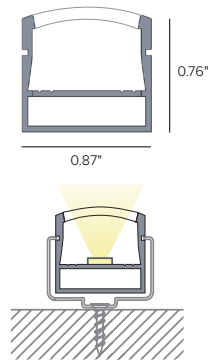


OR-DEV

Set of steel supports required with use of KTORDEV-U.

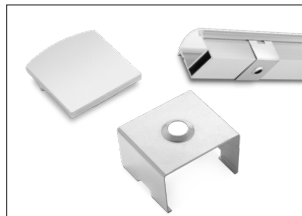
KTORDEV-U

Set of aluminum mounting heads required with use of OR-DEV.



PRIN-U

Flush mount aluminum profile. Anodized aluminum rigid profile complete with opal translucent diffuser cover. Available in 79in (2M) lengths.

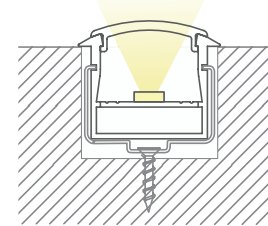
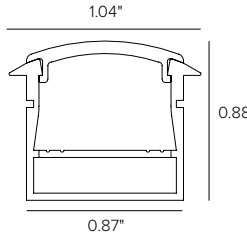


KTRIN-UEC

5 + 5 silver color end caps

KTPRU-CL

5 sets of clips



PRAN-U

45° aluminum profile. Anodized aluminum rigid profile complete with opal translucent diffuser cover. Available in 79in (2M) lengths.

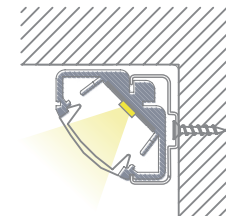
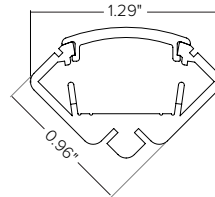


KTPRAN-UEC

5 + 5 silver color end caps

KTPRAN-UCL

5 sets of clips





a brand of TARGETTI

DURATAPE™ EXTREME TUNABLE

IP20 INDOOR

RECESSED PROFILES



P04H-S-PF-300

Aluminum profile with white polycarbonate screen for recessed installation. Available in 118in (3M) lengths.

NOTE: 118 inch lengths must be shipped via freight only. For efficient shipping via UPS/Fedex, lengths can be cut to 59 inch upon request.



P04H-A-EC

3+3 pc silver end caps.

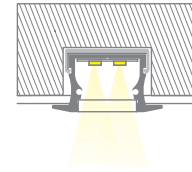
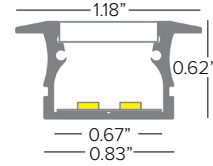
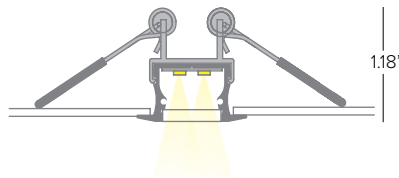
P04H-A-MC

3 Metal mounting clips.



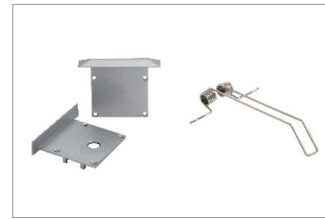
P04H-A-FS

3 pc metal ceiling attachment springs.



P08D-S-PF-300

Aluminum profile with white PMMA screen for recessed installation. Available in 118in (3M) lengths.

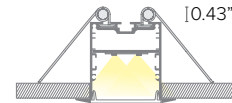
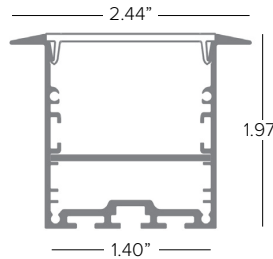


P08D-A-EC

3+3 pc silver end caps.

P08D-A-SP

3 pc metal ceiling attachment springs.



NOTE: 118 inch lengths must be shipped via freight only. For efficient shipping via UPS/Fedex, lengths can be cut to 59 inch upon request.



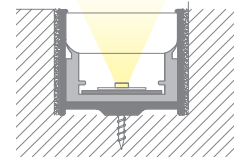
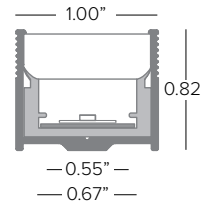
PRINTC-G

Rigid high impact resistant PMMA profile complete with a white plastic diffuser lensed channel for recessed walk over installation. Complete with track for easy strip insertion. Available in 3.28ft (1M) lengths.



KTRPRINTC-G

2+2 PC end caps





a brand of TARGETTI

DURATAPE™ EXTREME TUNABLE IP20 INDOOR

RECESSED PROFILES CONT.



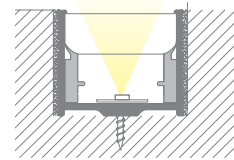
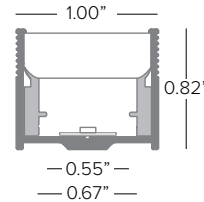
PRINTC-GUS

Rigid high impact resistant PMMA profile complete with two part white plastic diffuser lens and aluminum channel for surface or recessed mounting. Available in 3.28ft (1M) lengths.

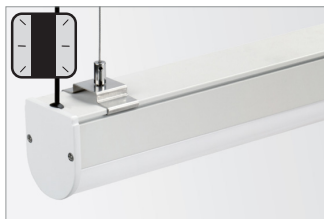


KTPRINTC-G

2+2 PC end caps

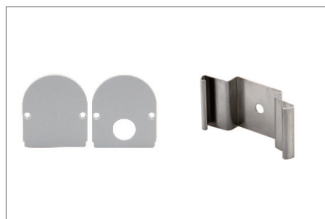


SUSPENSION PROFILES



P07A-S-PF-300

Aluminum profile with white polycarbonate screen for surface or suspension installation. Available in 118in (3M) lengths.



P07A-A-EC

3+3 pc white end caps.

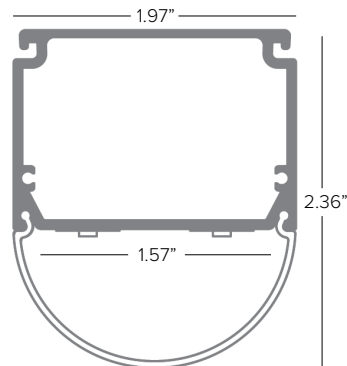
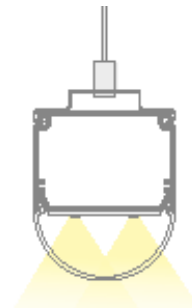
P07A-A-MC

6 Metal mounting clips.
(One set recommended for every 4ft)



P07A-A-FS

3 pc metal suspension cables.



NOTE: 118 inch lengths must be shipped via freight only. For efficient shipping via UPS/Fedex, lengths can be cut to 59 inch upon request.

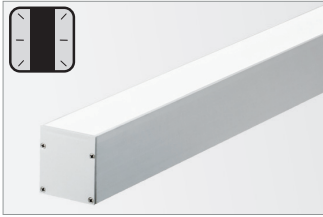


a brand of TARGETTI

DURATAPE™ EXTREME TUNABLE

IP20 INDOOR

SUSPENSION PROFILES CONT.



P01L-S-PF-300

Aluminum profile with white polycarbonate screen for suspension installation. Available in 118in (3M) lengths.

NOTE: 118 inch lengths must be shipped via freight only. For efficient shipping via UPS/Fedex, lengths can be cut to 59 inch upon request.



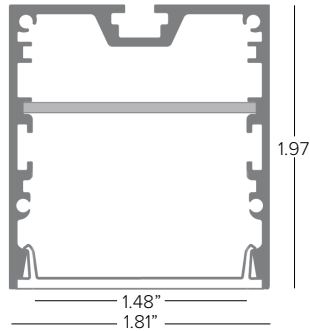
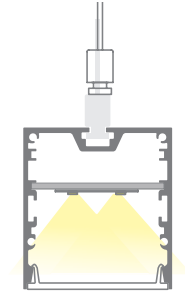
P01L-A-EC

3+3 pc silver end caps.



P01L-A-FS

3 pc metal suspension cables.

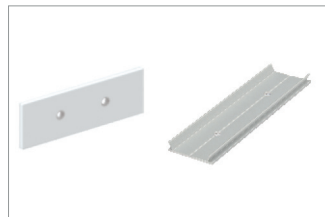


DECORATIVE PROFILES



P06A-S-PF-300

Aluminum profile with white PMMA screens for wall installation with wall washer effect upwards and downwards. Available in 118in (3M) lengths.



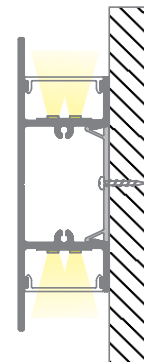
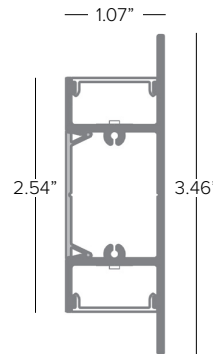
P06A-A-EC

3+3 pc silver end caps.

P06A-A-MC

1 set of metal brackets.

NOTE: 118 inch lengths must be shipped via freight only. For efficient shipping via UPS/Fedex, lengths can be cut to 59 inch upon request.





a brand of TARGETTI

DURATAPE™ EXTREME TUNABLE

IP20 INDOOR

| Power Supply (REQUIRED) | Type | Wattage | Input/Output Voltage | Dimmable | IP Rating | Output | Dimensions |
|-------------------------|---|---------|----------------------|-----------------------|-----------------|------------|-----------------------------|
| DEDD1001246CDMX | ELECTRONIC DRIVER WITH 6 CHANNEL ADDRESSABLE INTERFACE ASSEMBLY | 100W | 120-277V / 24V | DMX CONTROL 6 CHANNEL | NEMA1 ENCLOSURE | UL CLASS 2 | 12" x 12" x 4" ¹ |
| DEDDI2002246CDMX | ELECTRONIC DRIVER WITH 6 CHANNEL ADDRESSABLE INTERFACE ASSEMBLY | 200W | 120-277V / 24V | DMX CONTROL 6 CHANNEL | NEMA1 ENCLOSURE | UL CLASS 2 | 12" x 12" x 4" ¹ |

¹ Dimensions include enclosure with mounting bracket.

* Constant voltage drivers 50/60HZ, voltage regulated with short circuit protection. Operating temperature -40 C- 80° C

* Installation of power supply must be compliant to Class 2 installation standards. Refer to NEC and local building code requirements.

MAXIMUM INTERCONNECTED TAPE LENGTH PER DRIVER

| Fixture Wattage | Driver Wattage | |
|-----------------|----------------|----------|
| | 100W | 200W |
| 6.9W/ft | 11FT | (2) 11FT |

| Controller (Optional) | Type | Application | Voltage | Listing | Dimensions | # Ouput Channels | Number of Zones | Number of Scenes |
|-----------------------|---|-------------|---------|---------|----------------------|------------------|-----------------|------------------|
| TGDMXSLES AU9 | Stand-alone DMX Programmable Controller with Easy to Use Software Interface | Indoor Only | 5.5V DC | ETL, UL | 5.3"W x 5.5"H x 1.9D | 256 | 1 | 20 |



TGDMXSLES AU9



a brand of TARGETTI

DURATAPE™ EXTREME TUNABLE

IP20 INDOOR

PHOTOMETRY

| DURATAPE ET | | POLAR GRAPH |
|----------------|-----------|-------------|
| Fixture Power | 6.9W | |
| Fixture Output | 381Lm | |
| Kelvin Temp | RGBA | |
| Beam Spread | 120° | |
| IMax | 317cd/klm | |
| Efficacy | 55.2 Lm/W | |