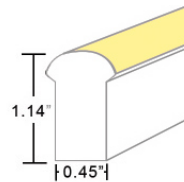
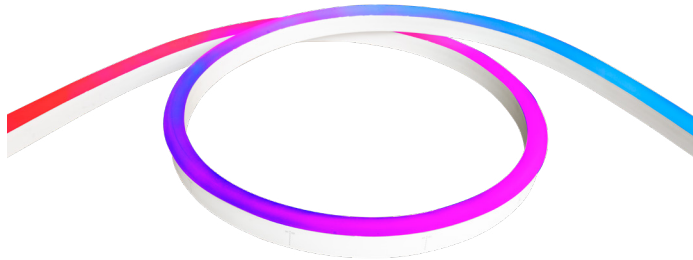




DIGITAL COLOR CHANGING RGBW LED NEON - 24V

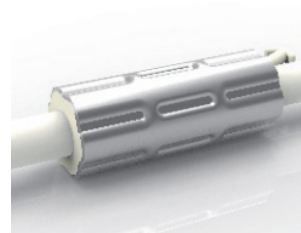
Dome Profile / Side Bending / Silicone



TECHNICAL INFORMATION

NOTE: All data has +/- 5% tolerance.

WATTAGE	4.6W per foot	
IP RATING	IP67 - wet locations. Protected against temporary submersion, limited protection against harsh environments.	
PROFILE	Dome	
BEND ORIENTATION	Side Bending	
HOUSING MATERIAL	Silicone	
OUTPUT	RGB 2700K	RGB 4000K
	RGB - 73 lm/ft Red (618-624nm) - 18 lm/ft Green (522-528nm) - 43 lm/ft Blue (468-474nm) - 9 lm/ft 2700K - 43 lm/ft	RGB - 73 lm/ft Red (618-624nm) - 18 lm/ft Green (522-528nm) - 43 lm/ft Blue (468-474nm) - 9 lm/ft 4000K - 50 lm/ft
INPUT VOLTAGE	24VDC	
SEGMENT LENGTH	Every 4.9", not field-cutttable	
MAXIMUM RUN	49 feet (single feed power)	
DIMENSIONS	0.45" W x 1.14" H (11.5mm x 29mm)	
MINIMUM BEND	4.72" diameter	
INSTALLATION TEMP.	32°F to 140°F (do not install when temperatures are below freezing)	
OPERATING TEMP.	-13°F to 140°F	
WARRANTY	3 year limited	
POWER SUPPLY	Compatible with all 24VDC non-dimming power supplies -- see page 6	

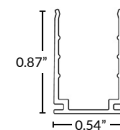


ANTI-WICKING FERRULE

Standard on all LED Neon power cables. Located 4.5" from the connector. Protects against water ingress and circuit board corrosion. H 0.47" x W 1.18"

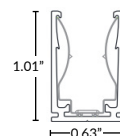
MOUNTING OPTIONS (SOLD SEPARATELY)

Channel options available (see page 5).



Mounting Clip

Part Number: LLI-ND-MCL-1.5IN
1.38" L x 0.87" H x 0.54" W
Recommended: 2 mounting clips for every 12in of Neon.



Spring Mounting Clip

Part Number: LLI-ND-MCL-S-1.5IN
1.38" L x 1.01" H x 0.63" W
Recommended: 2 mounting clips for every 12in of Neon.

NOTE: Neon sections may be mounted end-to-end on the non-power feed end to create the appearance of longer runs. End-to-end Neon sections must have a 0.5" to 1" gap to allow for expansion/contraction. A dark spot may be visible at <20ft viewing distance.

PART NUMBER BUILDER / ORDERING GUIDE

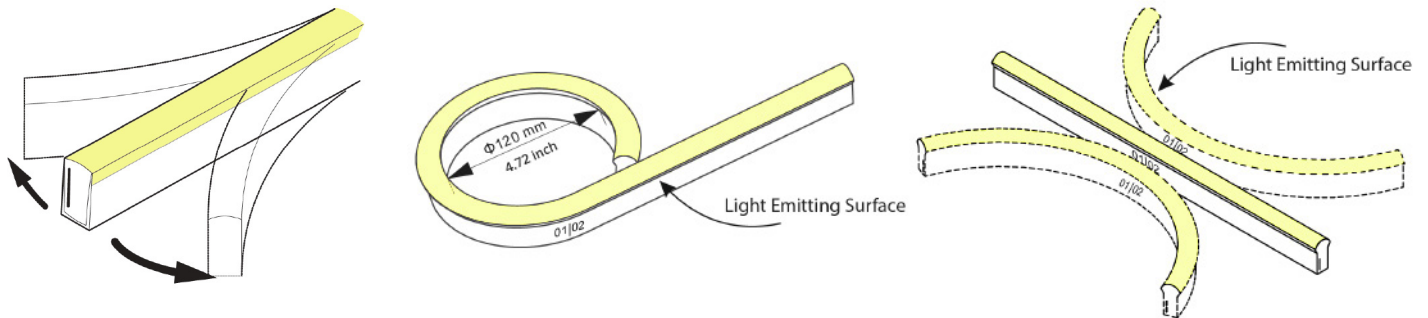
Example part number: LLI-ND4.6W-67-DSS-R27-24V-96in

SERIES	IP RATING	TYPE	CCT	VOLTAGE	LENGTH
LLI-ND4.6W	67	DSS	<input type="text"/>	24V	<input type="text"/>
			R27 R40		(enter length in inches, up to 587")

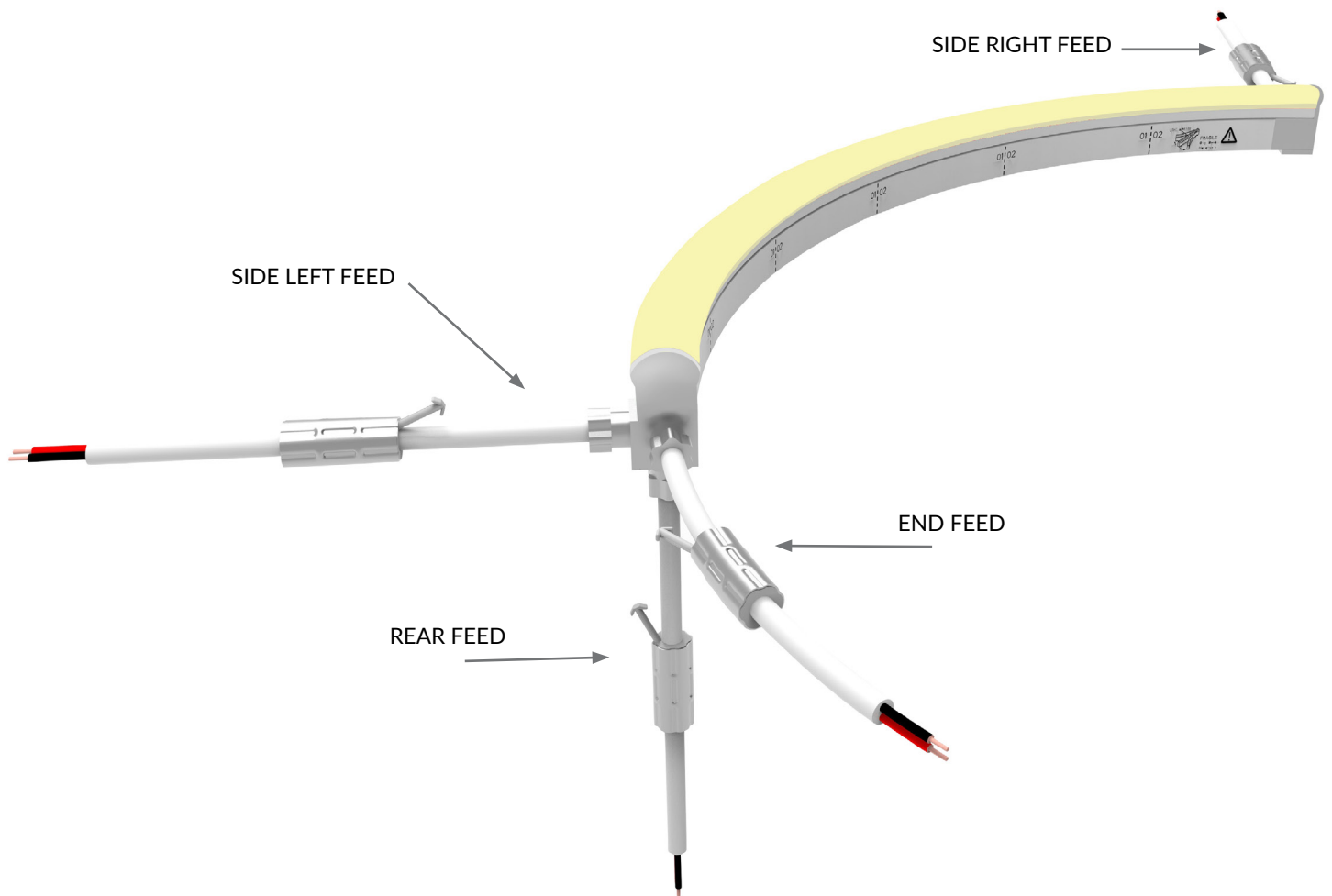
DIGITAL COLOR CHANGING RGBW LED NEON - 24V

Dome Profile / Side Bending / Silicone

ORIENTATION & MINIMUM BEND DIAMETER



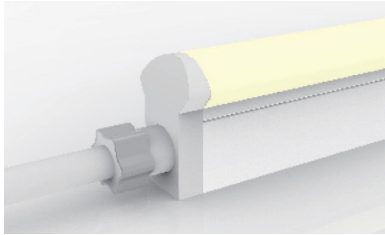
POWER FEED ORIENTATION GUIDE



DIGITAL COLOR CHANGING RGBW LED NEON - 24V

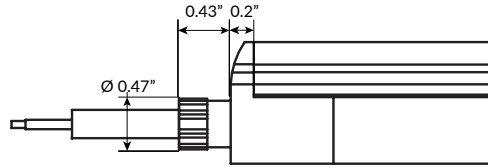
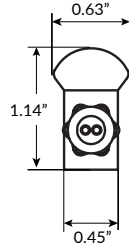
Dome Profile / Side Bending / Silicone

POWER FEED & TERMINATION OPTIONS (IP67)



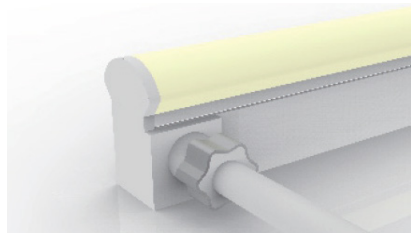
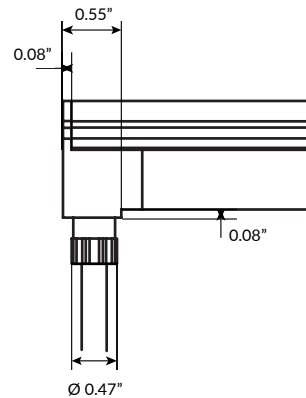
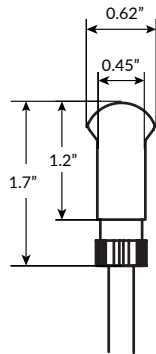
End Power Feed

SERIES	LENGTH
LLI-ND-67-PWR3-EF	39IN
	78IN
	118IN
	196IN
	393IN



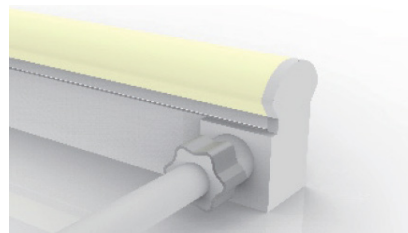
Rear Power Feed

SERIES	LENGTH
LLI-ND-67-PWR3-RF	39IN
	78IN
	118IN
	196IN
	393IN



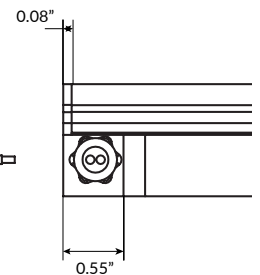
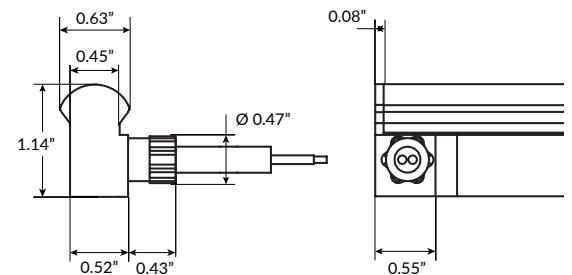
Side Right Power Feed

SERIES	SIDE	LENGTH
LLI-ND-67-PWR3	SR	39IN
		78IN
		118IN
		196IN
		393IN



Side Left Power Feed

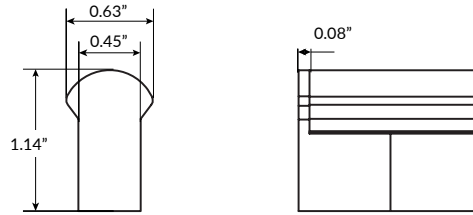
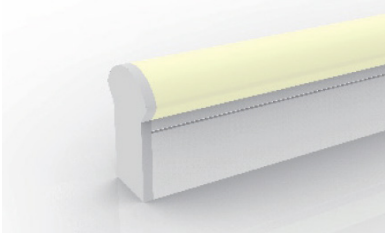
SERIES	SIDE	LENGTH
LLI-ND-67-PWR3	SL	39IN
		78IN
		118IN
		196IN
		393IN



DIGITAL COLOR CHANGING RGBW LED NEON - 24V

Dome Profile / Side Bending / Silicone

POWER FEED & TERMINATION OPTIONS (IP67)



End Cap

SERIES

LLI-ND-67-EC



Jumper Power Connector

SERIES

LLI-ND-67-CON3

SIDE LENGTH (L)

SR 12IN
 SL 39IN
 EF 78IN
 RF 118IN
 196IN
 393IN



*NOTE: For power feeds longer than 196", the maximum length of Neon may be reduced.

OVERALL LENGTH / CUT POINT GUIDE

Dimension tolerance of $\pm 1/8"$.

Measurements below do not include area required for routing power wire. Add 1" distance to layout to account for routing end feed power wire.

This product expands and contracts in varying ambient temperatures. If butting Neon end-to-end, add 1/2" to 1" gap between sections for expansion.

5.20"	10.12"	15.04"	19.96"	24.88"	29.80"	34.72"	39.64"	44.56"	49.48"	54.40"	59.32"
64.24"	69.16"	74.08"	79.00"	83.92"	88.84"	93.76"	98.68"	103.60"	108.52"	113.44"	118.36"
123.28"	128.20"	133.12"	138.04"	142.96"	147.88"	152.80"	157.72"	162.64"	167.56"	172.48"	177.40"
182.32"	187.24"	192.16"	197.08"	202.00"	206.92"	211.84"	216.76"	221.68"	226.60"	231.52"	236.44"
241.36"	246.28"	251.20"	256.12"	261.04"	265.96"	270.88"	275.80"	280.72"	285.64"	290.56"	295.48"
300.40"	305.32"	310.24"	315.16"	320.08"	325.00"	329.92"	334.84"	339.76"	344.68"	349.60"	354.52"
359.44"	364.36"	369.28"	374.20"	379.12"	384.04"						

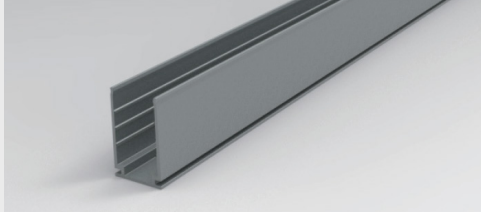
DIGITAL COLOR CHANGING RGBW LED NEON - 24V

Dome Profile / Side Bending / Silicone

MOUNTING CHANNELS

NOTE: Leave a 0.5" to 1" gap between Neon power feed and mounting channel, to avoid undue stress on power feed cables.

ALUMINUM MOUNTING CHANNEL

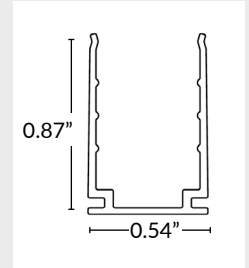


20" Mounting Channel

Part Number: LLI-ND-EXT-20IN
Dimensions: 20" L x 1.01" H x 0.63" W

39" Mounting Channel

Part Number: LLI-ND-EXT-39IN
Dimensions: 39" L x 1.01" H x 0.63" W



ALUMINUM MOUNTING CHANNEL WITH SPRING CLIPS

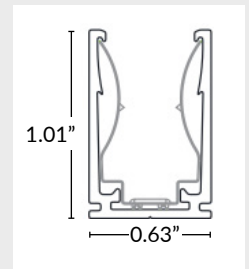


20" Mounting Channel

Part Number: LLI-ND-EXT-S-20IN
Dimensions: 20" L x 1.01" H x 0.63" W

39" Mounting Channel

Part Number: LLI-ND-EXT-S-39IN
Dimensions: 39.4" L x 1.01" H x 0.63" W



FLEXIBLE STAINLESS STEEL MOUNTING CHANNEL



4" Mounting Channel

Part Number: LLI-ND-EXT-F-4IN
Dimensions: 4" L x 0.97" H x 0.52" W

12" Mounting Channel

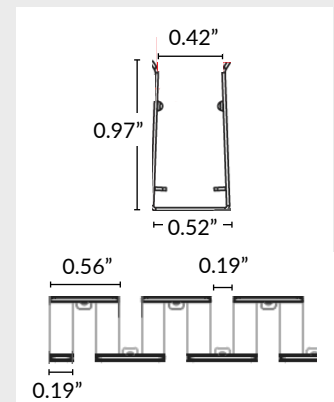
Part Number: LLI-ND-EXT-F-12IN
Dimensions: 12" L x 0.97" H x 0.52" W

20" Mounting Channel

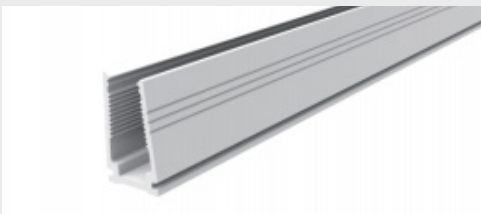
Part Number: LLI-ND-EXT-F-20IN
Dimensions: 20" L x 0.97" H x 0.52" W

35" Mounting Channel

Part Number: LLI-ND-EXT-F-35IN
Dimensions: 35" L x 0.97" H x 0.52" W



PLASTIC MOUNTING CHANNEL

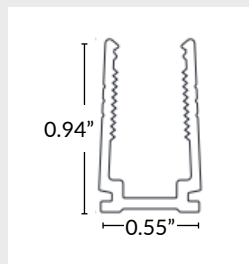


20" Mounting Channel

Part Number: LLI-ND-EXT-P-20IN
Dimensions: 20" L x 0.94" H x 0.55" W

39" Mounting Channel

Part Number: LLI-ND-EXT-P-39IN
Dimensions: 39.4" L x 0.94" H x 0.55" W



DIGITAL COLOR CHANGING RGBW LED NEON - 24V

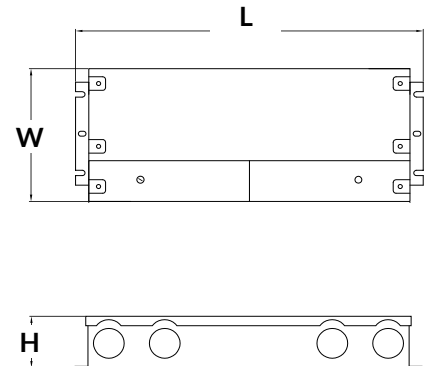
Dome Profile / Side Bending / Silicone

POWER SUPPLY (SOLD SEPARATELY)

NON-DIMMABLE ELECTRONIC



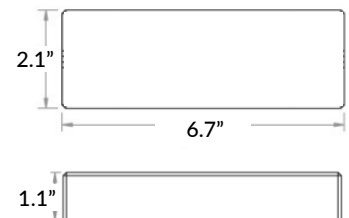
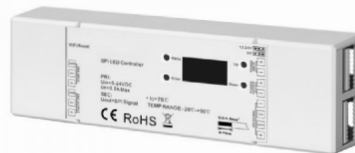
PART NUMBER	CAPACITY	OUTPUT	CLASS	LOCATION	L	W	H
LLI-PS-NDE-030W-24V-KO	30W	24V	CLASS 2	WET	6.5"	3.5"	1.02"
LLI-PS-NDE-060W-24V-KO	60W	24V	CLASS 2	WET	7.4"	3.5"	1.2"
LLI-PS-NDE-096W-24V-KO	96W	24V	CLASS 2	WET	8.7"	3.7"	1.7"
LLI-PS-NDE-200W-24V-KO	200W	24V	CLASS 1	WET	10.3"	4.1"	1.8"
LLI-PS-NDE-300W-24V-KO	300W	24V	CLASS 1	WET	10.9"	4.3"	1.8"



PIXEL DECODER (SOLD SEPARATELY)

LLI-C-DEC-DMX-PIX-5A

OUTPUT CAPACITY	5A maximum
IP RATING	IP20 - dry locations
OUTPUT	SPI data signal
MAXIMUM RUN	128 individual pixels 1020 grouped pixels
OPERATING TEMP	-4° to 122° F
PROTOCOL	DMX512 / RF
DIMENSIONS	L 6.7" x W 2.1" x H 1.1"
WARRANTY	5 year limited



DMX ADDRESSABILITY

512 addressable DMX channels with digital display

POWER

Power supply not included. 5V / 12V-24V non-dimming power supply required.

DIGITAL COLOR CHANGING RGBW LED NEON - 24V

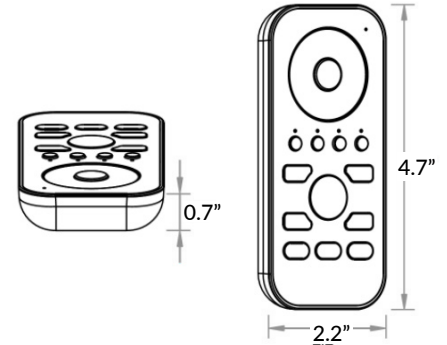
Dome Profile / Side Bending / Silicone

RF CONTROLLERS (SOLD SEPARATELY)

REMOTE CONTROLLER

LLI-C-CTRL-RGBW-HH

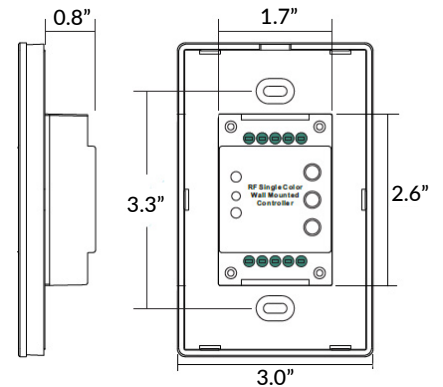
RECEIVER COMPATIBILITY	Compatible with Universal RF receivers
LED COMPATIBILITY	RGB(W) LEDs
INPUT VOLTAGE	Battery operated (3 AAA batteries not included)
FEATURES	Programmable up to 4 zones, 3 scenes Color adjustment Light intensity adjustment



TOUCH PANEL WALL CONTROLLER

LLI-C-CTRL-RGBW-TP-WH

RECEIVER COMPATIBILITY	Compatible with Universal RF receivers
LED COMPATIBILITY	RGB(W) LEDs
INPUT VOLTAGE	12V DC power supply required (not included)
FEATURES	Control range ≥ 65ft Programmable up to 3 scenes 4 color presets Color adjustment Light intensity adjustment



DIGITAL COLOR CHANGING RGBW LED NEON - 24V

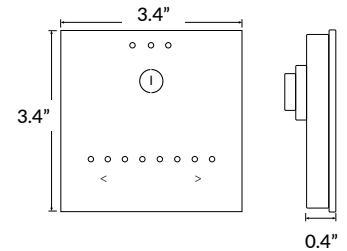
Dome Profile / Side Bending / Silicone

DMX WALL CONTROLLERS (SOLD SEPARATELY)

STAND ALONE DMX WALL CONTROLLER, GU2

LLI-C-CTRL-DMX-STICK-GU2

INCLUDED IN PACKAGE	Controller, CD-ROM, USB cable, connector block, power supply
OS/COMPUTER REQUIREMENTS	Mac OSx 10.6 or higher / Windows XP or higher, USB 2.0 port
PROGRAM SOFTWARE	Easy Stand Alone, ESA2 (included)
CONNECTIONS	Power (2 pins), DMX (3 pins), Port (2 pins), Micro-USB Port
MOUNTING	Single or double gang wall box
IP RATING	IP20 - dry locations only



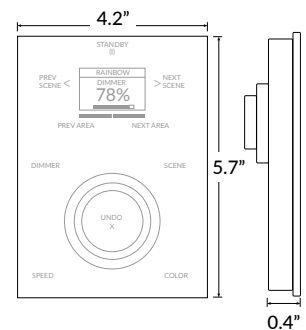
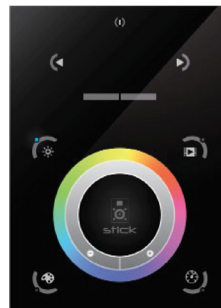
FEATURES

- Up to 24 dynamic or static scenes
- Wall mounted control panel with glass face, touch-sensitive buttons
- Programmable with included USB cable and software – no Ethernet or WiFi required

STAND ALONE DMX WALL CONTROLLER, DE3

LLI-C-CTRL-DMX-STICK-DE3

INCLUDED IN PACKAGE	Controller, connector block, power supply
OS/COMPUTER REQUIREMENTS	Mac OSx 10.6 or higher / Windows XP or higher / iOS phone or tablet / Android phone or tablet
PROGRAM SOFTWARE	Easy Stand Alone, ESA2 (Mac/Windows) DMX Lightpad 3 App (iOS/Android) Easy Remote App (iOS/Android)
CONNECTIONS	Power/DMX - screw terminal and RJ45 compatible Memory - MicroSD slot Programming - MicroUSB port
POWER SUPPLY	6VDC power supply (included)
MEMORY	MicroSD card (not included)
MOUNTING	Single or double gang wall box
IP RATING	IP20 - dry locations only



FEATURES

- Multi-zone microSD memory
- Multi-room control with 500 scenes, 10 zones
- Integrated clock and calendar for scheduling events
- Touch-sensitive buttons
- USB and Ethernet connectivity for programming
- Windows/Mac software for programming dynamic effects
- iPhone/iPad/Android apps for remote control and program

DIGITAL COLOR CHANGING RGBW LED NEON - 24V

Dome Profile / Side Bending / Silicone

DMX WALL CONTROLLERS (SOLD SEPARATELY)

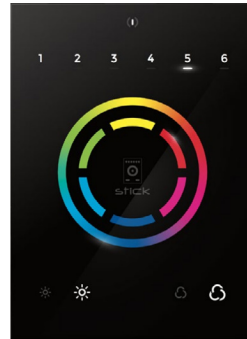
STAND ALONE DMX WALL CONTROLLER, CW4

LLI-C-CTRL-DMX-STICK-CW4 - FINISH

BL Black glass

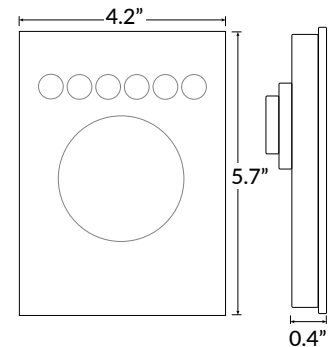
WH White glass

INCLUDED IN PACKAGE	Controller, connector block, power supply, mini-USB cable, ESA2 software, ESA Pro2 Software
OS/COMPUTER REQUIREMENTS	Mac OSx 10.6 or higher / Windows XP or higher
PROGRAM SOFTWARE	Easy Stand Alone, ESA2 (Mac/Windows)
CONNECTIONS	Power/DMX - screw terminal and RJ45 Programming - miniUSB port
POWER SUPPLY	Requires 5-10VDC 0.6A power supply (included)
MEMORY	Integrated flash memory
MOUNTING	Single or double gang wall box
IP RATING	IP20 - dry locations only



FEATURES

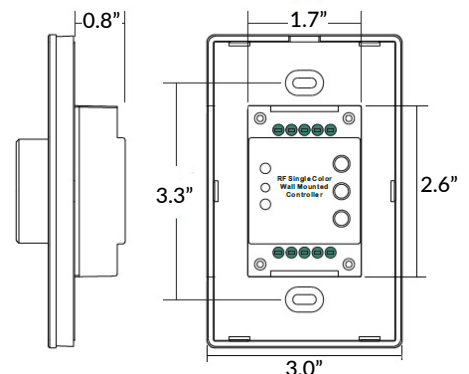
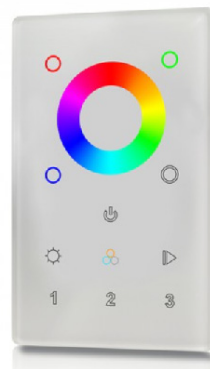
- Can be controlled directly from a computer, smartphone, or tablet
- Touch-sensitive buttons, glass face
- Up to 36 dynamic or static scenes
- 8 port triggers
- 1024 DMX channels control up to 340 RGB fixtures
- Windows/Mac software for programming dynamic effects
- Internal clock and calendar with sunrise/sunset triggering



TOUCH PANEL DMX WALL CONTROLLER

LLI-C-CTRL-DMX-RGBW-TP

LED TAPE COMPATIBILITY	Compatible with 12-24V DC LED tapes
PROTOCOL	DMX512
ZONES	3 zones
INTERFACE	Glass touch control
WARRANTY	5 year limited



POWER

Power supply for controller not included. 12V DC power supply required.