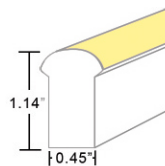
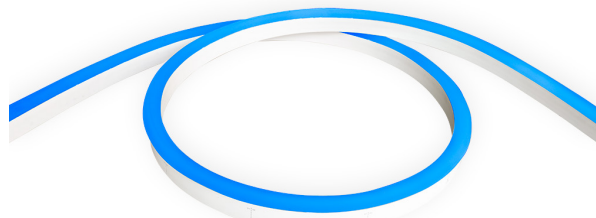




LLI ARCHITECTURAL LIGHTING

COLOR CHANGING LED NEON - 24V

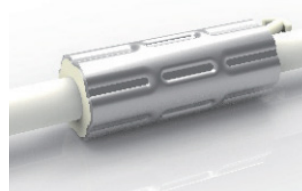
Dome Profile / Side Bending / Silicone



TECHNICAL INFORMATION

NOTE: All data has +/- 5% tolerance.

| | |
|--------------------|--|
| WATTAGE | 3.7W per foot |
| IP RATING | IP67 - wet locations. Protected against temporary submersion, limited protection against harsh environments. |
| PROFILE | Dome |
| BEND ORIENTATION | Side Bending |
| HOUSING MATERIAL | Silicone |
| OUTPUT | Red (618-624nm) - 18 lm/ft Green (522-528nm) - 43 lm/ft Blue (468-474nm) - 9 lm/ft RGB - 70 lm/ft |
| INPUT VOLTAGE | 24VDC |
| SEGMENT LENGTH | Every 3.94", not field-cuttable |
| MAXIMUM RUN | 32 feet (single feed power) 50 feet (double feed power) |
| DIMENSIONS | 0.45" W x 1.14" H (11.5mm x 29mm) |
| MINIMUM BEND | 4.72" diameter |
| INSTALLATION TEMP. | 32°F to 140°F (do not install when temperatures are below freezing) |
| OPERATING TEMP. | -13°F to 140°F |
| WARRANTY | 3 year limited |
| CONTROLS | Receiver/decoder and controller required - see pages 6-10 |
| POWER SUPPLY | Compatible with all non-dimmable 24VDC power supplies - see page 6 |



ANTI-WICKING FERRULE

Standard on all LED Neon power cables. Located 4.5" from the connector. Protects against water ingress and circuit board corrosion. H 0.47" x W 1.18"

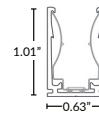
MOUNTING CLIP OPTIONS (SOLD SEPARATELY)

Channel options available (page 5). Recommended 2 clips per 12" of Neon.



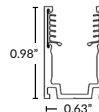
Mounting Clip

Part Number: LLI-ND-MCL-1.5IN
1.38" L x 0.87" H x 0.54" W



Spring Mounting Clip

Part Number: LLI-ND-MCL-S-1.5IN
1.38" L x 1.01" H x 0.63" W



Silicone Grip Mounting Clip

Part Number: LLI-ND-MCL-SG-0.8IN
0.80" L x 0.98" H x 0.63" W

NOTE: Neon sections may be mounted end-to-end on the non-power feed end to create the appearance of longer runs. End-to-end Neon sections must have a 0.5" to 1" gap to allow for expansion/contraction. A dark spot may be visible at <20ft viewing distance.

PART NUMBER BUILDER / ORDERING GUIDE

Example part number: LLI-N3.7W-67-DSS-RGB-24V-96in

SERIES IP RATING TYPE COLOR VOLTAGE LENGTH

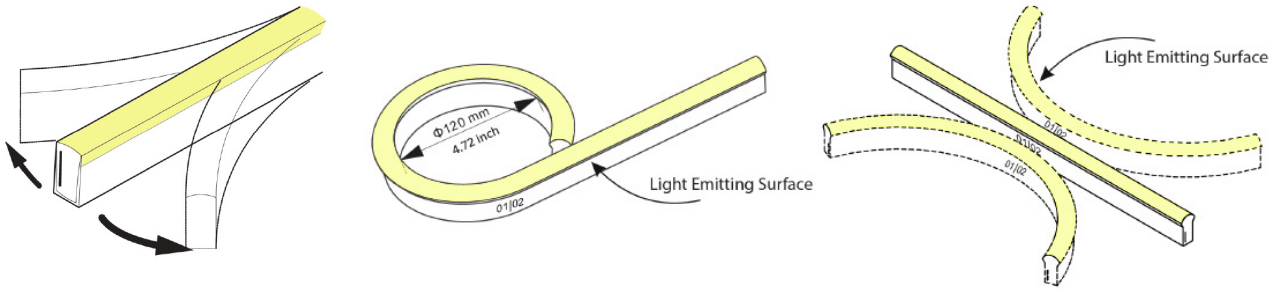
LLI-N3.7W - 67 - DSS - RGB - 24V -

(enter length in inches, up to 600")

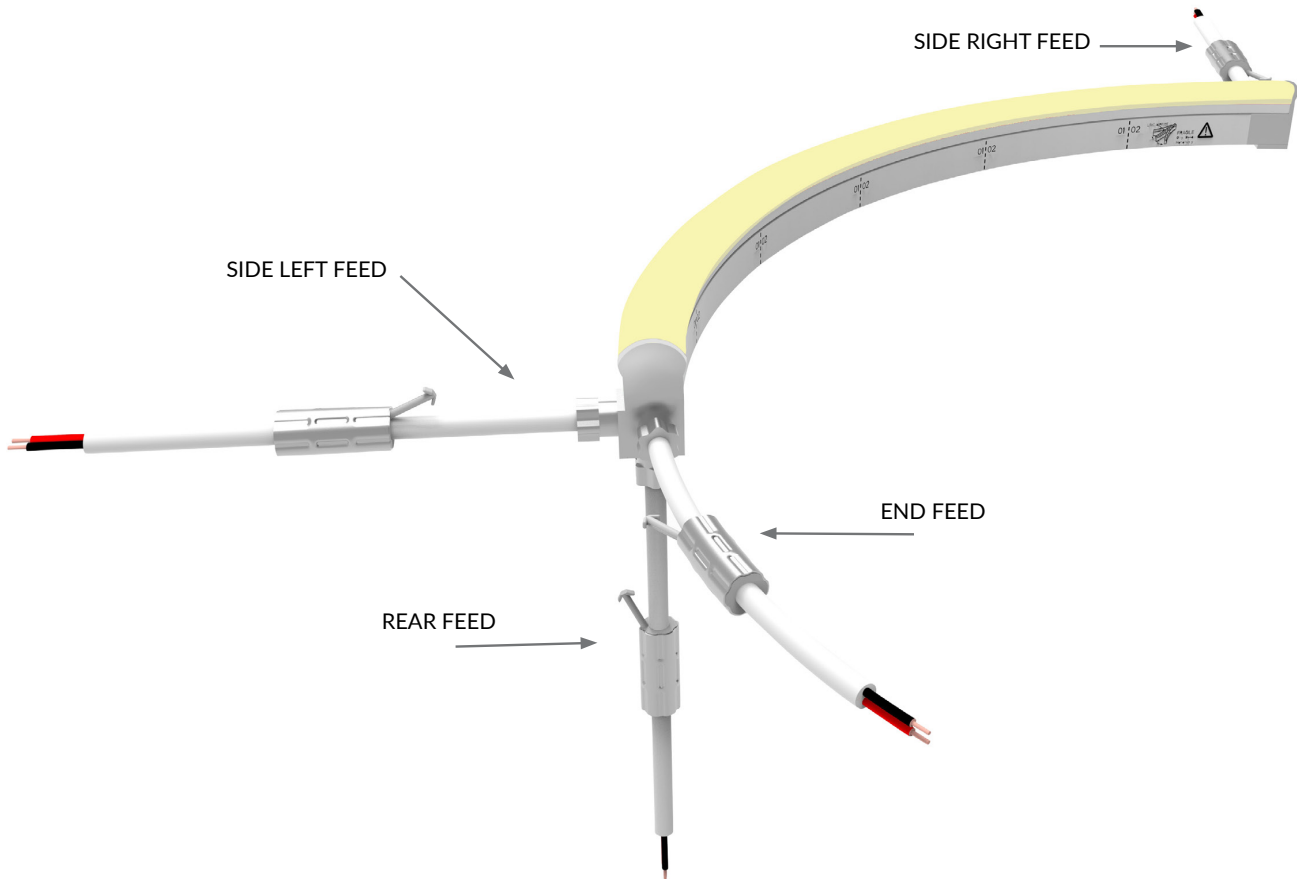
COLOR CHANGING LED NEON - 24V

Dome Profile / Side Bending / Silicone

ORIENTATION & MINIMUM BEND DIAMETER



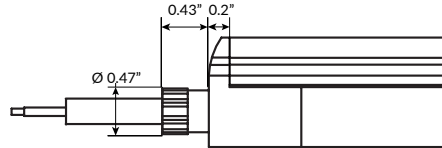
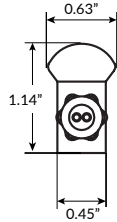
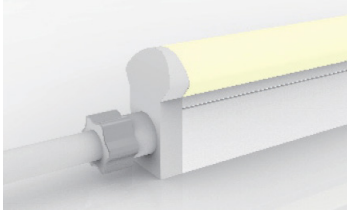
POWER FEED ORIENTATION GUIDE



COLOR CHANGING LED NEON - 24V

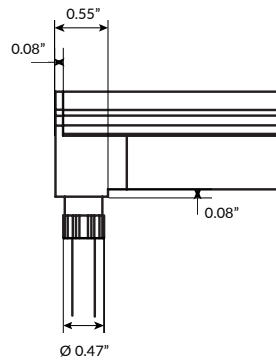
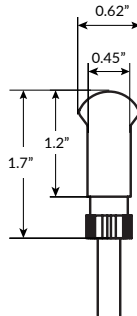
Dome Profile / Side Bending / Silicone

POWER FEED & TERMINATION OPTIONS (IP67)



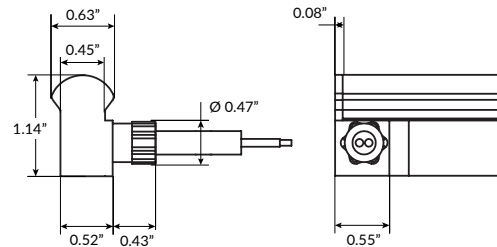
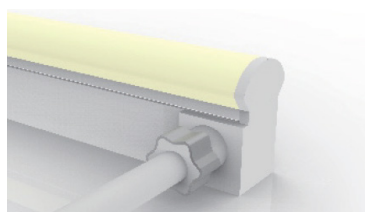
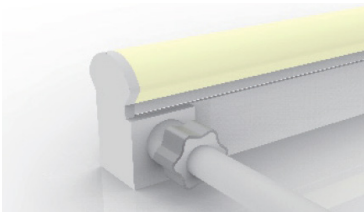
End Power Feed

| SERIES | LENGTH |
|-------------------|----------------------|
| LLI-ND-67-PWR4-EF | <input type="text"/> |
| | 39IN |
| | 78IN |
| | 118IN |
| | 196IN |
| | 393IN |



Rear Power Feed

| SERIES | LENGTH |
|-------------------|----------------------|
| LLI-ND-67-PWR4-RF | <input type="text"/> |
| | 39IN |
| | 78IN |
| | 118IN |
| | 196IN |
| | 393IN |



Side Right Power Feed

| SERIES | SIDE | LENGTH |
|----------------|------|----------------------|
| LLI-ND-67-PWR4 | SR | <input type="text"/> |
| | | 39IN |
| | | 78IN |
| | | 118IN |
| | | 196IN |
| | | 393IN |

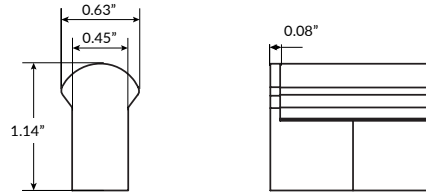
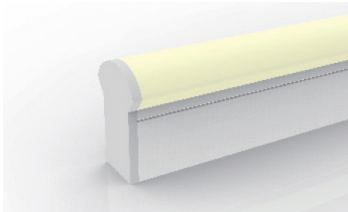
Side Left Power Feed

| SERIES | SIDE | LENGTH |
|----------------|------|----------------------|
| LLI-ND-67-PWR4 | SL | <input type="text"/> |
| | | 39IN |
| | | 78IN |
| | | 118IN |
| | | 196IN |
| | | 393IN |

COLOR CHANGING LED NEON - 24V

Dome Profile / Side Bending / Silicone

POWER FEED & TERMINATION OPTIONS (IP67)



End Cap

SERIES

LLI-ND-67-EC

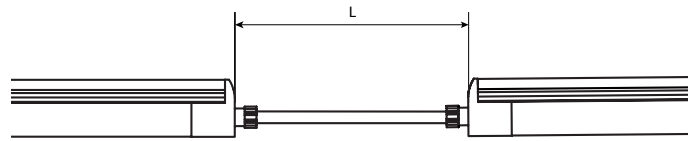


Jumper Power Connector

SERIES SIDE LENGTH (L)

LLI-ND-67-CON4

| | |
|----|-------|
| SR | 12IN |
| SL | 39IN |
| EF | 78IN |
| RF | 118IN |
| | 196IN |
| | 393IN |



OVERALL LENGTH / CUT POINT GUIDE

Dimension tolerance of $\pm 1/8"$.

Measurements below do not include area required for routing power wire. Add 1" distance to layout to account for routing end feed power wire.

This product expands and contracts in varying ambient temperatures. If butting Neon end-to-end, add 1/2" to 1" gap between sections for expansion.

Power feed from one end:

| | | | | | | | | | | | |
|---------|---------|---------|---------|---------|---------|---------|---------|---------|---------|---------|---------|
| 4.22" | 8.16" | 12.10" | 16.04" | 19.98" | 23.92" | 27.86" | 31.80" | 35.74" | 39.68" | 43.62" | 47.56" |
| 51.50" | 55.44" | 59.38" | 63.32" | 67.26" | 71.20" | 75.14" | 79.08" | 83.02" | 86.96" | 90.90" | 94.84" |
| 98.78" | 102.72" | 106.66" | 110.60" | 114.54" | 118.48" | 122.42" | 126.36" | 130.30" | 134.24" | 138.18" | 142.12" |
| 146.06" | 150.00" | 153.94" | 157.88" | 161.82" | 165.76" | 169.70" | 173.64" | 177.58" | 181.52" | 185.46" | 189.40" |
| 193.34" | 197.28" | 201.22" | 205.16" | 209.10" | 213.04" | 216.98" | 220.92" | 224.86" | 228.80" | 232.74" | 236.68" |
| 240.62" | 244.56" | 248.50" | 252.44" | 256.38" | 260.32" | 264.26" | 268.20" | 272.14" | 276.08" | 280.02" | 283.96" |
| 287.90" | 291.84" | 295.78" | 299.72" | 303.66" | 307.60" | 311.54" | 315.48" | 319.42" | 323.36" | 327.30" | 331.24" |
| 335.18" | 339.12" | 343.06" | 347.00" | 350.94" | 354.88" | 358.82" | 362.76" | 366.70" | 370.64" | 374.58" | 378.52" |
| 382.46" | | | | | | | | | | | |

Power feed from both ends:

| | | | | | | | | | | | |
|---------|---------|---------|---------|---------|---------|---------|---------|---------|---------|---------|---------|
| 386.40" | 390.34" | 394.28" | 398.22" | 402.16" | 406.10" | 410.04" | 413.98" | 417.92" | 421.86" | 425.80" | 429.74" |
| 433.68" | 437.62" | 441.56" | 445.50" | 449.44" | 453.38" | 457.32" | 461.26" | 465.20" | 469.14" | 473.08" | 477.02" |
| 480.96" | 484.90" | 488.84" | 492.78" | 496.72" | 500.66" | 504.60" | 508.54" | 512.48" | 516.42" | 520.36" | 524.30" |
| 528.24" | 532.18" | 536.12" | 540.06" | 544.00" | 547.94" | 551.88" | 555.82" | 559.76" | 563.70" | 567.64" | 571.58" |
| 575.52" | 579.46" | 583.40" | 587.34" | | | | | | | | |

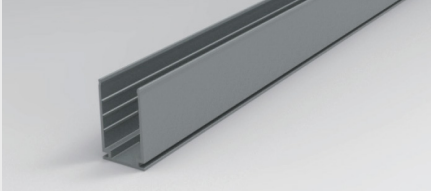
COLOR CHANGING LED NEON - 24V

Dome Profile / Side Bending / Silicone

MOUNTING CHANNELS

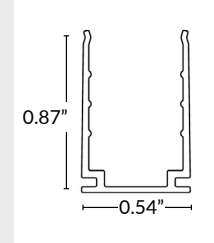
NOTE: Leave a 0.5" to 1" gap between Neon power feed and mounting channel, to avoid undue stress on power feed cables.

ALUMINUM MOUNTING CHANNEL



20" Mounting Channel
Part Number: LLI-ND-EXT-20IN
Dimensions: 20" L x 1.01" H x 0.63" W

39" Mounting Channel
Part Number: LLI-ND-EXT-39IN
Dimensions: 39" L x 1.01" H x 0.63" W

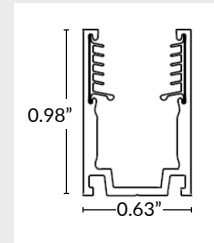


SILICONE GRIP ALUMINUM MOUNTING CHANNEL

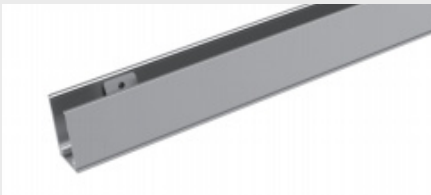


20" Mounting Channel
Part Number: LLI-ND-EXT-SG-20IN
Dimensions: 20" L x 0.98" H x 0.63" W

39" Mounting Channel
Part Number: LLI-ND-EXT-SG-39IN
Dimensions: 39" L x 0.98" H x 0.63" W

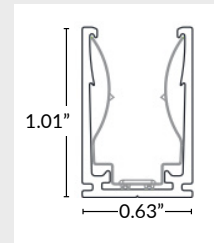


ALUMINUM MOUNTING CHANNEL WITH SPRING CLIPS



20" Mounting Channel
Part Number: LLI-ND-EXT-S-20IN
Dimensions: 20" L x 1.01" H x 0.63" W

39" Mounting Channel
Part Number: LLI-ND-EXT-S-39IN
Dimensions: 39.4" L x 1.01" H x 0.63" W



FLEXIBLE STAINLESS STEEL MOUNTING CHANNEL

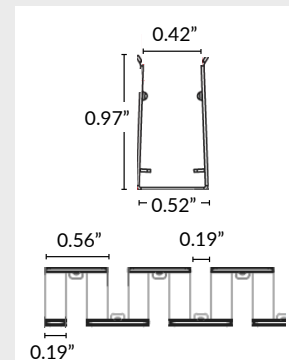


4" Mounting Channel
Part Number: LLI-ND-EXT-F-4IN
Dimensions: 4" L x 0.97" H x 0.52" W

12" Mounting Channel
Part Number: LLI-ND-EXT-F-12IN
Dimensions: 12" L x 0.97" H x 0.52" W

20" Mounting Channel
Part Number: LLI-ND-EXT-F-20IN
Dimensions: 20" L x 0.97" H x 0.52" W

35" Mounting Channel
Part Number: LLI-ND-EXT-F-35IN
Dimensions: 35" L x 0.97" H x 0.52" W



COLOR CHANGING LED NEON - 24V

Dome Profile / Side Bending / Silicone

MOUNTING CHANNELS (CONTINUED)

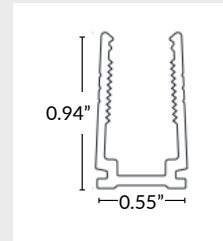
NOTE: Leave a 0.5" to 1" gap between Neon power feed and mounting channel, to avoid undue stress on power feed cables.

PLASTIC MOUNTING CHANNEL



20" Mounting Channel
Part Number: LLI-ND-EXT-P-20IN
Dimensions: 20" L x 0.94" H x 0.55" W

39" Mounting Channel
Part Number: LLI-ND-EXT-P-39IN
Dimensions: 39.4" L x 0.94" H x 0.55" W

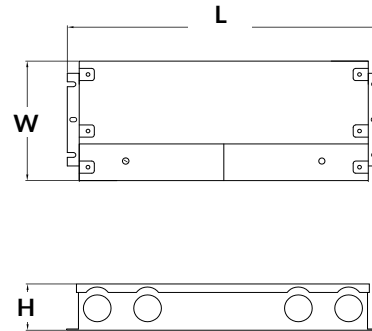


POWER SUPPLY (SOLD SEPARATELY)

NON-DIMMABLE ELECTRONIC



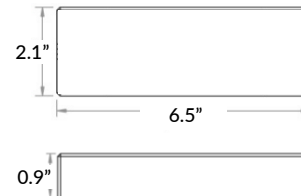
| PART NUMBER | CAPACITY | OUTPUT | CLASS | LOCATION | L | W | H |
|------------------------|----------|--------|---------|----------|-------|------|-------|
| LLI-PS-NDE-030W-24V-KO | 30W | 24V | CLASS 2 | WET | 6.5" | 3.5" | 1.02" |
| LLI-PS-NDE-060W-24V-KO | 60W | 24V | CLASS 2 | WET | 7.4" | 3.5" | 1.2" |
| LLI-PS-NDE-096W-24V-KO | 96W | 24V | CLASS 2 | WET | 8.7" | 3.7" | 1.7" |
| LLI-PS-NDE-200W-24V-KO | 200W | 24V | CLASS 1 | WET | 10.3" | 4.1" | 1.8" |
| LLI-PS-NDE-300W-24V-KO | 300W | 24V | CLASS 1 | WET | 10.9" | 4.3" | 1.8" |




RF RECEIVER (SOLD SEPARATELY)

LLI-C-RCV-UR-RF-4CH

| | |
|--------------------------|---|
| CONTROLLER COMPATIBILITY | Compatible with all RF LLI-C-CTRL controllers. |
| LED COMPATIBILITY | Static Color, Tunable White & RGB(W) LEDs |
| CHANNELS | 4 Channel, 8 Amp |
| INPUT VOLTAGE | 12V / 24V (power supply not included) |
| CAPACITY | 12V - 96W, 24V - 192W |
| FEATURES | Can be controlled by up to (8) controllers Can be synchronized with unlimited receivers up to 320ft away |



| | | | |
|--|--|--|------|
|  | Project 21-12877-3 Date 6/25/2021 RGB/W Saturated Color Submitted By 16500, INC | Catalog Number LLI-N3.7W-67-DSS-RGB-24V-PF Notes | Type |
|--|--|--|------|

COLOR CHANGING LED NEON - 24V

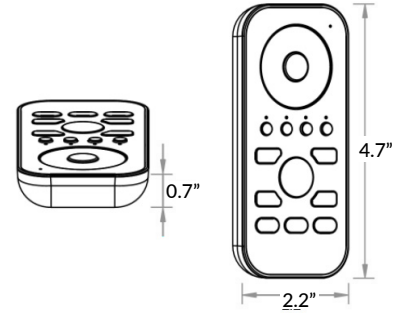
Dome Profile / Side Bending / Silicone

RF CONTROLLERS (SOLD SEPARATELY)

REMOTE CONTROLLER

LLI-C-CTRL-RGBW-HH

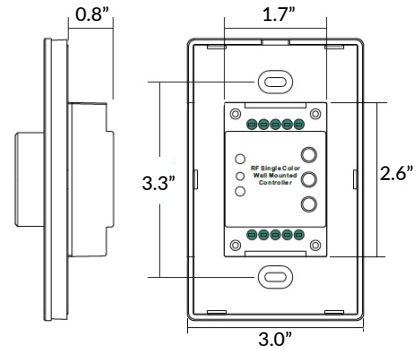
| | |
|------------------------|--|
| RECEIVER COMPATIBILITY | Compatible with Universal RF receivers |
| LED COMPATIBILITY | RGB(W) LEDs |
| INPUT VOLTAGE | Battery operated (3 AAA batteries not included) |
| FEATURES | Programmable up to 4 zones, 3 scenes Color adjustment Light intensity adjustment |



ROTARY WALL CONTROLLER

LLI-C-CTRL-RGB-RT

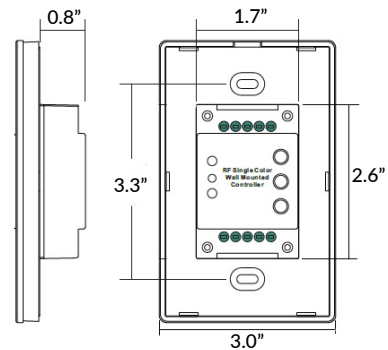
| | |
|------------------------|---|
| RECEIVER COMPATIBILITY | Compatible with Universal RF receivers |
| LED COMPATIBILITY | RGB LEDs |
| INPUT VOLTAGE | Battery operated (3V DC not included) |
| FEATURES | Control range \geq 65ft Programmable single zone Color adjustment Light intensity adjustment |



TOUCH PANEL WALL CONTROLLER

LLI-C-CTRL-RGBW-TP-WH

| | |
|------------------------|---|
| RECEIVER COMPATIBILITY | Compatible with Universal RF receivers |
| LED COMPATIBILITY | RGB(W) LEDs |
| INPUT VOLTAGE | 12V DC power supply required (not included) |
| FEATURES | Control range \geq 65ft Programmable up to 3 scenes 4 color presets Color adjustment Light intensity adjustment |



COLOR CHANGING LED NEON - 24V

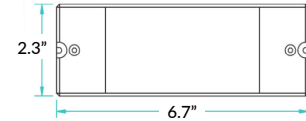
Dome Profile / Side Bending / Silicone

DMX DECODERS (SOLD SEPARATELY)

DMX512 DECODER

LLI-C-DEC-DMX512-8A

| | |
|-----------------|---|
| LOCATION RATING | Indoor only |
| FUNCTION | Single color, variable white, RGB(W) LEDs |
| CHANNELS | 4 channel output, 8 Amp maximum 512 addressable DMX channels |
| CAPACITY | 12V - 96W maximum |
| | 24V - 192W maximum |
| COMPATIBILITY | Compatible with LLI-C-CTRL-DMX controllers |



POWER

Power supply not included. 12V/24V non-dimming power supply required.

RDM DMX512 DECODER

LLI-C-DEC-DMX512-8A-RDM

| | |
|-----------------|--|
| OUTPUT | 8A maximum, 4 channels |
| LOCATION RATING | Indoor only |
| FUNCTION | RDM communication and PWM dimming for static white, static color, tunable white, and RGB(W) LEDs |
| CHANNELS | 4 channel output, 8 Amp maximum 512 addressable DMX channels |
| CAPACITY | 12V - 96W maximum |
| | 24V - 192W maximum |
| COMPATIBILITY | Compatible with LLI-C-CTRL-DMX controllers |



2.9"




FEATURES

Can be controlled by up to eight (8) controllers. Can be synchronized with twenty (20) decoders.

POWER

Power supply not included. 12V/24V non-dimming power supply required.



| | | | |
|--|--|--|------|
|  | Project 21-12877-3 Date 6/25/2021 RGB/W Saturated Color Submitted By 16500, INC | Catalog Number LLI-N3.7W-67-DSS-RGB-24V-PF Notes | Type |
|--|--|--|------|

COLOR CHANGING LED NEON - 24V

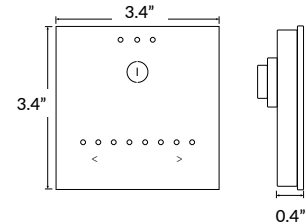
Dome Profile / Side Bending / Silicone

DMX WALL CONTROLLERS (SOLD SEPARATELY)

STAND ALONE DMX WALL CONTROLLER, GU2

LLI-C-CTRL-DMX-STICK-GU2

| | |
|--------------------------|--|
| INCLUDED IN PACKAGE | Controller, CD-ROM, USB cable, connector block, power supply |
| OS/COMPUTER REQUIREMENTS | Mac OSx 10.6 or higher / Windows XP or higher, USB 2.0 port |
| PROGRAM SOFTWARE | Easy Stand Alone, ESA2 (included) |
| CONNECTIONS | Power (2 pins), DMX (3 pins), Port (2 pins), Micro-USB Port |
| MOUNTING | Single or double gang wall box |
| IP RATING | IP20 - dry locations only |



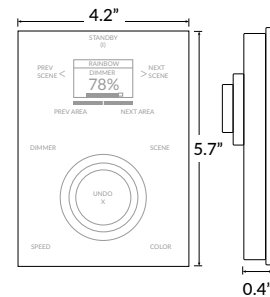
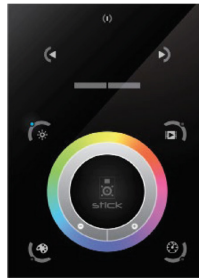
FEATURES

- Up to 24 dynamic or static scenes
- Wall mounted control panel with glass face, touch-sensitive buttons
- Programmable with included USB cable and software - no Ethernet or WiFi required

STAND ALONE DMX WALL CONTROLLER, DE3


LLI-C-CTRL-DMX-STICK-DE3

| | |
|--------------------------|---|
| INCLUDED IN PACKAGE | Controller, connector block, power supply |
| OS/COMPUTER REQUIREMENTS | Mac OSx 10.6 or higher / Windows XP or higher / iOS phone or tablet / Android phone or tablet |
| PROGRAM SOFTWARE | Easy Stand Alone, ESA2 (Mac/Windows) DMX Lightpad 3 App (iOS/Android) Easy Remote App (iOS/Android) |
| CONNECTIONS | Power/DMX - screw terminal and RJ45 compatible Memory - MicroSD slot Programming - MicroUSB port |
| POWER SUPPLY | 6VDC power supply (included) |
| MEMORY | MicroSD card (not included) |
| MOUNTING | Single or double gang wall box |
| IP RATING | IP20 - dry locations only |



FEATURES

- Multi-zone microSD memory
- Multi-room control with 500 scenes, 10 zones
- Integrated clock and calendar for scheduling events
- Touch-sensitive buttons
- USB and Ethernet connectivity for programming
- Windows/Mac software for programming dynamic effects
- iPhone/iPad/Android apps for remote control and program

| | | | |
|---|--|---|------|
|  | Project 21-12877-3 Date 6/25/2021 RGB/W Saturated Color | Catalog Number LLI-N3.7W-67-DSS-RGB-24V-PF | Type |
| | Submitted By 16500, INC | Notes | |

COLOR CHANGING LED NEON - 24V

Dome Profile / Side Bending / Silicone

DMX WALL CONTROLLERS (SOLD SEPARATELY)

STAND ALONE DMX WALL CONTROLLER, CW4

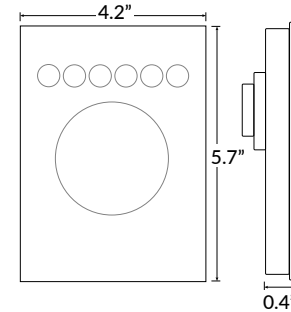
| | |
|---------------------------------|--|
| LLI-C-CTRL-DMX-STICK-CW4 | FINISH |
| | <input type="text"/> |
| | BL Black glass WH White glass |



| | |
|--------------------------|---|
| INCLUDED IN PACKAGE | Controller, connector block, power supply, mini-USB cable, ESA2 software, ESA Pro2 Software |
| OS/COMPUTER REQUIREMENTS | Mac OSx 10.6 or higher / Windows XP or higher |
| PROGRAM SOFTWARE | Easy Stand Alone, ESA2 (Mac/Windows) |
| CONNECTIONS | Power/DMX - screw terminal and RJ45 Programming - miniUSB port |
| POWER SUPPLY | Requires 5-10VDC 0.6A power supply (included) |
| MEMORY | Integrated flash memory |
| MOUNTING | Single or double gang wall box |
| IP RATING | IP20 - dry locations only |

FEATURES

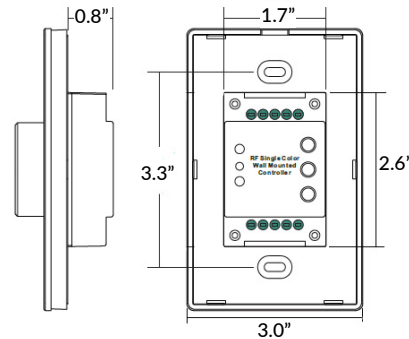
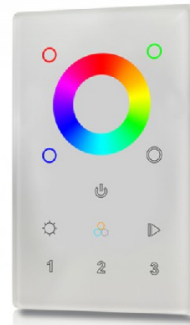
- Can be controlled directly from a computer, smartphone, or tablet
- Touch-sensitive buttons, glass face
- Up to 36 dynamic or static scenes
- 8 port triggers
- 1024 DMX channels control up to 340 RGB fixtures
- Windows/Mac software for programming dynamic effects
- Internal clock and calendar with sunrise/sunset triggering



TOUCH PANEL DMX WALL CONTROLLER

LLI-C-CTRL-DMX-RGBW-TP

| | |
|------------------------|-------------------------------------|
| LED TAPE COMPATIBILITY | Compatible with 12-24V DC LED tapes |
| PROTOCOL | DMX512 |
| ZONES | 3 zones |
| INTERFACE | Glass touch control |
| WARRANTY | 5 year limited |



POWER

Power supply for controller not included.
12V DC power supply required.