

### Description

FloppyFlex Digital Large STS is flexible 24V LED neon with multi-pixel control for advanced chasing, programmable scenes, and animated visual effects via FloppyDrive Digital. It features a rich, vibrant color palette with RGB or RGBW LEDs. Available with PVC housing with a pixel size of 125 mm and an average beam angle of 170.5° (50%) or longer lasting silicone housing with a pixel size of 125 mm and an average beam angle of 145.9° (50%). The minimum side-to-side bend diameter is 120 mm. Black base is standard with a homogenous LED package without "skittles" effect.

### Features

- Digital RGB or RGBW with multi-pixel control in 125 mm sections
- Super bright, pixel package with homogenous lighting surface
- 170.5° beam angle (PVC), 145.9° beam angle (Silicone)
- Tight 120 mm side-to-side bend
- Seamless color mixing, beautiful dimming via FloppyDrive Digital
- Auto-addressing allows for quick setup and patching
- Largest viewable beam spread in the FloppyFlex family
- Wide range of accessories for joining, terminating, mounting, powering
- Easy to use and install
- Unlimited and unprecedented possibilities

### Applications

Installation, architectural, digital signage, gameshows, arcades, signs, film and television sets, theme parks, bars and clubs, cruise ships, creating words, indirect applications, and scenic elements

### Available Connectors

Injection Molded Power Feed and End cap connectors available, fully customizable for no-hassle installations. PVC IP67, Silicone IP68.

Double Molded IP68 Power Feed and End cap connectors available, suitable for submersible applications. PVC only - not available for silicone versions.

EZ-Connect power feeds and end caps allow for easy onsite terminations with IP67 ratings, and allow for the End, Side, Middle, or Bottom power feed entry.

**Flame Resistant — UV Resistant — Solvents Resistant  
Saltwater Resistant — IP67 Protection — IK08 Protection**

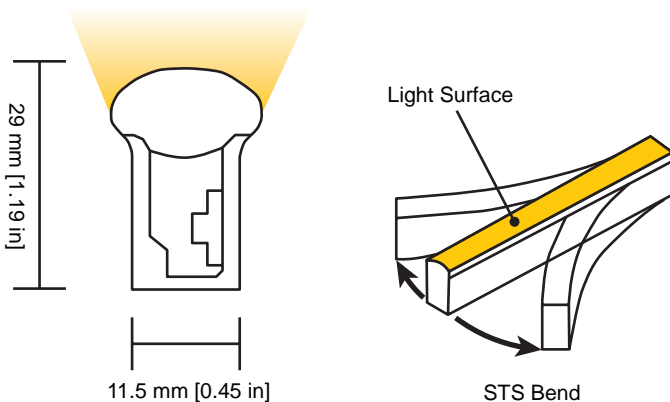
### Certifications

When connectors are correctly installed.

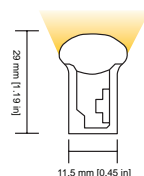
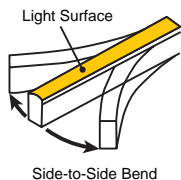
cULus Listed, CE, TUV and RoHS compliant and passes rigorous environmental, optical, mechanical, and electrical testing.



**Exclusive Distribution — The Americas, Europe, and Asia  
Innovative, Performance-Driven Show Technology Since 1983**



	Digital Large RGB PVC Specifications				Digital Large RGB Silicone Specifications			
Part Number	FFLDRGBB				FFLSDRGB			
Type	Digital Multi-Pixel Control				Digital Multi-Pixel Control			
Color	RGB				RGB			
Color/CCT	Red	Green	Blue	R+G+B	Red	Green	Blue	R+G+B
Wavelength	618-624nm	522-528nm	468-474nm	-	618-624nm	522-528nm	468-474nm	-
Lumen/m	42	110	18	170	40	110	20	170
Lumen/ft	13	34	5	52	12	34	6	52
Beam Angle, Average (50%)	170.5°				145.9°			
Number of Pixels Per Meter	8				8			
LED Quantity Per Pixel	7				7			
LED Quantity Per Meter	56				56			
DMX Channels	3 per pixel / 24 per meter				3 per pixel / 24 per meter			
Base Color	Black base standard, other colors available on request				White base standard, other colors available on request			
Housing	PVC				Silicone			
Cut & Connect Joints	Located Every 125 mm [4.92 in]				Located Every 125 mm [4.92 in]			
Minimum Bend Diameter	120 mm [4.72 in]				120 mm [4.72"]			
Bending Direction	Side-to-Side (STS)				Side-to-Side (STS)			
Connectors & Hardware	Factory molded connectors Field attachable connectors Aluminum mounting channels				Factory molded connectors Field attachable connectors Aluminum mounting channels			
Operating Voltage	24 VDC				24 VDC			
Wiring	3-Wire				3-Wire			
Power Consumption	12 W/m				12 W/m			
Max Fixture Runs	Single end feed	15 m [49.6 ft] Dynamic Operation			Single end feed	20 m [65.6 ft] Dynamic Operation		
		10 m [32.8 ft] Full Static Load				15 m [49.6 ft] Full Static Load		
	Double end feed	30 m [99.2 ft] Dynamic Operation			Double end feed	40 m [131.2 ft] Dynamic Operation		
		20 m [65.6 ft] Full Static Load				30 m [98.4 ft] Full Static Load		
Control	DMX-512 via FloppyDrive Digital				DMX-512 via FloppyDrive Digital			
Installation Temperature	0 to 45 °C [32 to 113°F]				-40 to 50 °C [-40 to 122°F]			
Operating Temperature	-20 to 45 °C [-4 to 113 °F]				-40 to 55 °C [-40 to 131 °F]			
Mounting Surface Temperature	60 °C [140 °F] Max.				85 °C [185 °F] Max.			
Storage Temperature	-20 to 60 °C [-4 to 140 °F]				-40 to 60 °C [-40 to 140 °F]			
Dimensions (WxHxD)	11.5 mm x 29 mm x variable [0.45 in x 1.19 in x variable]				11.5 mm x 29 mm x variable [0.45 in x 1.19 in x variable]			
Ingress Protection	IP67 with Molded connectors IP68 with Double Molded connectors IP67 with EZ-Connect connectors				IP68 with Molded connectors IP67 with EZ-Connect connectors Double Molded not available			
Listing	UL2108 Class 2, CE-EMC				UL2108 Class 2, CE-EMC			
Warranty	3 Years				5 Years			



**Exclusive Distribution – The Americas, Europe, and Asia**

sales@tmb.com

Los Angeles  
+1 818.899.8818

London  
+44 (0)20.8574.9700

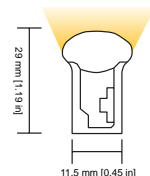
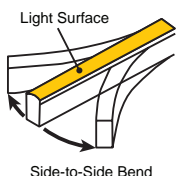
**tmb**  
www.tmb.com

New York  
+1 201.896.8600

Beijing  
+86 10.8492.1587

Toronto  
+1 519.538.0888

	Digital Large RGBW PVC Specifications				Digital Large RGBW Silicone Specifications			
Part Number	FFLDRGBWWB				FFLSDRGBWW			
Type	Digital Multi-Pixel Control				Digital Multi-Pixel Control			
Color	RGBW				RGBW			
Color/CCT	Red	Green	Blue	White	Red	Green	Blue	White
Wavelength	618-624nm	522-528nm	468-474nm	2725±145K	618-624nm	522-528nm	468-474nm	2725±85K
Lumen/m	42	110	18	110	40	110	20	110
Lumen/ft	13	34	5	34	12	34	6	34
Beam Angle, Average (50%)	170.5°				145.9°			
Number of Pixels Per Meter	8				8			
LED Quantity Per Pixel	7				7			
LED Quantity Per Meter	56				56			
DMX Channels	4 per pixel / 32 per meter				4 per pixel / 32 per meter			
Base Color	Black base standard, other colors available on request				Black base standard, other colors available on request			
Housing	PVC				Silicone			
Cut & Connect Joints	Located Every 125 mm [4.92 in]				Located Every 125 mm [4.92 in]			
Minimum Bend Diameter	120 mm [4.72 in]				120 mm [4.72"]			
Bending Direction	Side-to-Side (STS)				Side-to-Side (STS)			
Connectors & Hardware	Factory molded connectors Field attachable connectors Aluminum mounting channels				Factory molded connectors Field attachable connectors Aluminum mounting channels			
Operating Voltage	24 VDC				24 VDC			
Wiring	3-Wire				3-Wire			
Power Consumption	15 W/m				15 W/m			
Max Fixture Runs	Single end feed	10 m [32.8 ft] Dynamic Operation			Single end feed	15 m [49.6 ft] Dynamic Operation		
		5 m [16.4 ft] Full Static Load				10 m [32.8 ft] Full Static Load		
	Double end feed	20 m [65.6 ft] Dynamic Operation			Double end feed	30 m [98.4 ft] Dynamic Operation		
		10 m [32.8 ft] Full Static Load				20 m [65.6 ft] Full Static Load		
Control	DMX-512 via FloppyDrive Digital				DMX-512 via FloppyDrive Digital			
Installation Temperature	0 to 45 °C [32 to 113°F]				-40 to 50 °C [-40 to 122°F]			
Operating Temperature	-20 to 35 °C [-4 to 95 °F]				-40 to 55 °C [-40 to 131 °F]			
Mounting Surface Temperature	60 °C [140 °F] Max.				85 °C [185 °F] Max.			
Storage Temperature	-20 to 60 °C [-4 to 140 °F]				-40 to 60 °C [-40 to 140 °F]			
Dimensions (WxHxD)	11.5 mm x 29 mm x variable [0.45 in x 1.19 in x variable]				11.5 mm x 29 mm x variable [0.45 in x 1.19 in x variable]			
Ingress Protection	IP67 with Molded connectors IP68 with Double Molded connectors IP67 with EZ-Connect connectors				IP68 with Molded connectors IP67 with EZ-Connect connectors Double Molded not available			
Listing	UL2108 Class 2, CE-EMC				UL2108 Class 2, CE-EMC			
Warranty	3 Years				5 Years			



Exclusive Distribution – The Americas, Europe, and Asia

sales@tmb.com

Los Angeles  
+1 818.899.8818

London  
+44 (0)20.8574.9700

**tmb**  
www.tmb.com

New York  
+1 201.896.8600

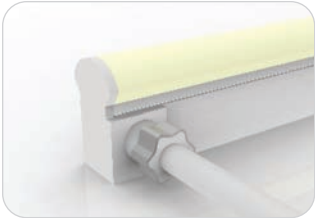
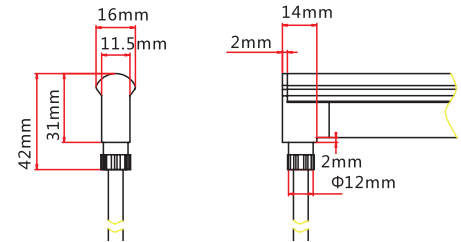
Beijing  
+86 10.8492.1587

Toronto  
+1 519.538.0888



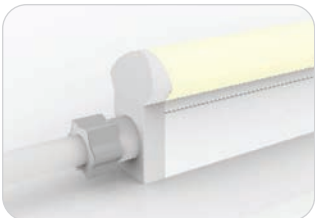
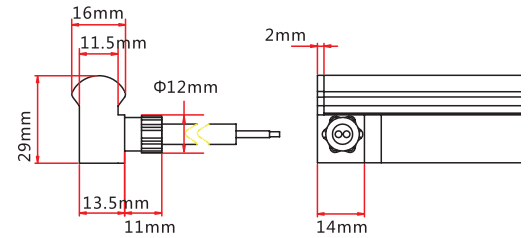
### Molded Bottom Entry Connection

Connects FloppyFlex Large to power supply with pre-installed bottom feed cable, IP67.  
Cable length available in 0.3 m, 1 m, 3 m, 5 m, 10 m.



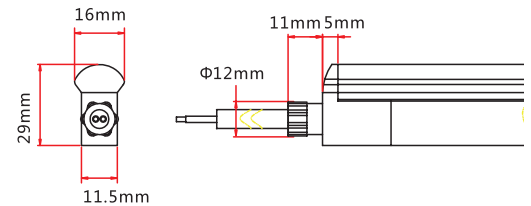
### Molded Side Entry Connection

Connects FloppyFlex Large to power supply with pre-installed side feed cable, IP67.  
Cable length available in 0.3 m, 1 m, 3 m, 5 m, 10 m.



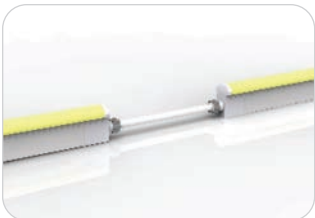
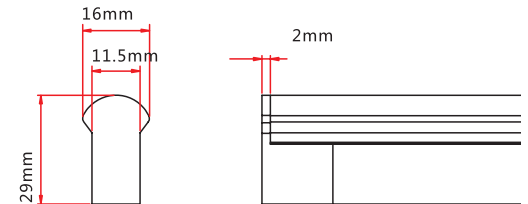
### Molded End Entry Connection

Connects FloppyFlex Large to power supply with pre-installed end feed cable, IP67.  
Cable length available in 0.3 m, 1 m, 3 m, 5 m, 10 m.



### Molded End Cap

Pre-installed termination protection of FloppyFlex Large, IP67.



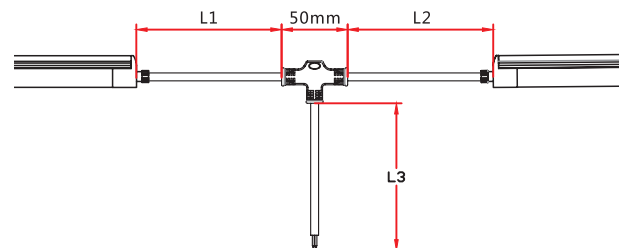
### Molded End Entry Connection

Connects two pieces of FloppyFlex Large together with a flexible cable, IP67.  
Cable length available in 0.3 - 1 m.  
Maximum 8 jumpers per 20 m  
Maximum 4 jumpers per 10 m



### Molded T-Feed Connection

Connects two pieces of FloppyFlex Large together with powered T-joint, IP67.  
L1 and L2 length available in 0.15-0.5 m.  
L3 length available in 0.3 - 1 m  
Maximum 8 T-Feeds per 20 m  
Maximum 4 T-Feeds per 10 m



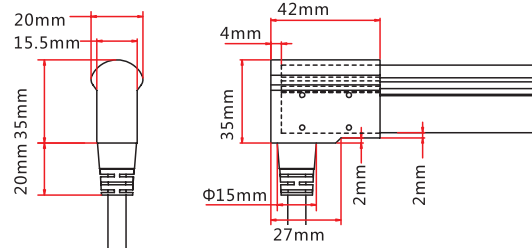
**Exclusive Distribution – The Americas, Europe, and Asia**



### Double-Molded Bottom Entry Connection

Connects FloppyFlex Large to power supply with pre-installed end feed cable, IP68.

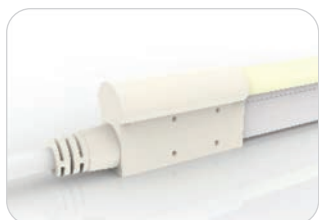
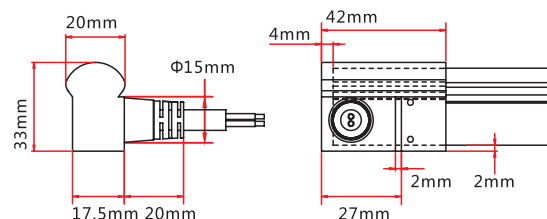
Cable length available in 0.3 m, 1 m, 3 m, 5 m, 10 m.



### Double-Molded Side Entry Connection

Connects FloppyFlex Large to power supply with pre-installed side feed cable, IP68.

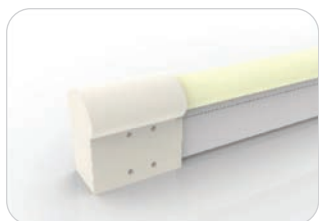
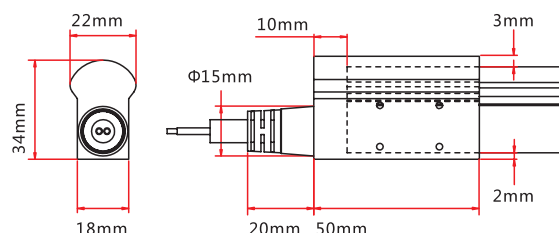
Cable length available in 0.3 m, 1 m, 3 m, 5 m, 10 m.



### Double-Molded End Entry Connection

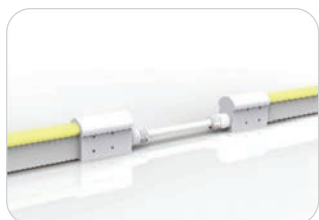
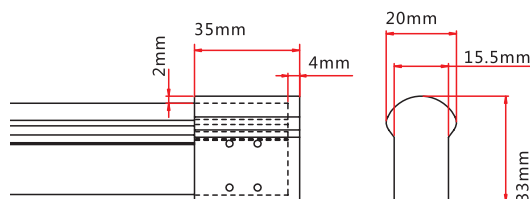
Connects FloppyFlex Large to power supply with pre-installed end feed cable, IP68.

Cable length available in 0.3 m, 1 m, 3 m, 5 m, 10 m.



### Double-Molded End Cap

Pre-installed termination protection of FloppyFlex Large, IP68.



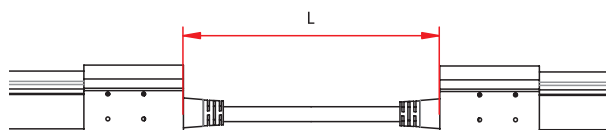
### Double-Molded End Entry Connection

Connects two pieces of FloppyFlex Large together with a flexible cable, IP68.

Cable length available in 0.3 - 1 m.

Maximum 8 jumpers per 20 m

Maximum 4 jumpers per 10 m



### Double-Molded T-Feed Connection

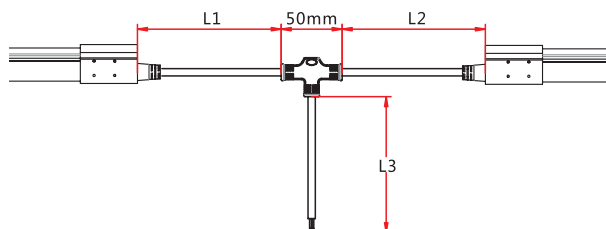
Connects two pieces of FloppyFlex Large together with powered T-joint, IP68.

L1 and L2 length available in 0.15-0.5 m.

L3 length available in 0.3 - 1 m

Maximum 8 T-Feeds per 20 m

Maximum 4 T-Feeds per 10 m



**Exclusive Distribution – The Americas, Europe, and Asia**

sales@tmb.com

Los Angeles  
+1 818.899.8818

London  
+44 (0)20.8574.9700

**tmb**  
www.tmb.com

New York  
+1 201.896.8600

Beijing  
+86 10.8492.1587

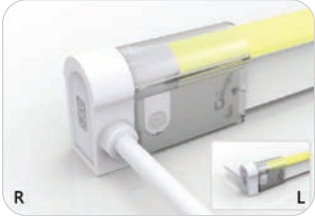
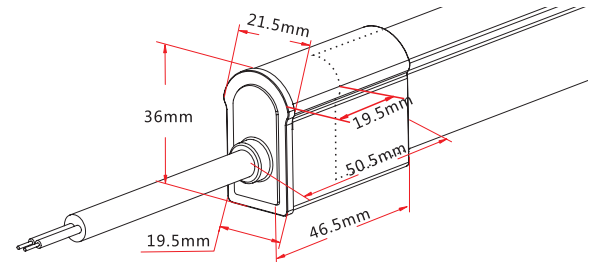
Toronto  
+1 519.538.0888





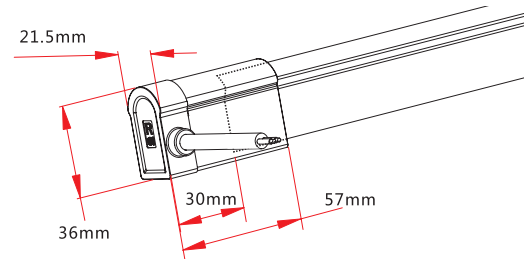
### EZ-Connect Bottom Entry

Connects FloppyFlex Large to power supply with user-installable end feed cable, IP67.  
Cable length available in 0.3 m, 1 m, 3 m, 5 m, 10 m.



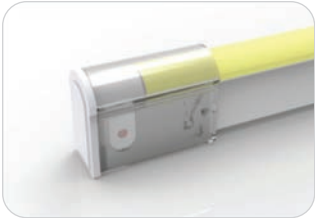
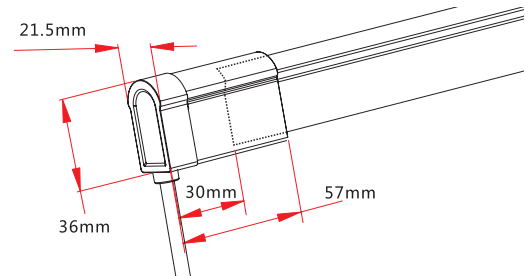
### EZ-Connect Side Entry

Connects FloppyFlex Large to power supply with user-installable side feed cable, IP67.  
Cable length available in 0.3 m, 1 m, 3 m, 5 m, 10 m.



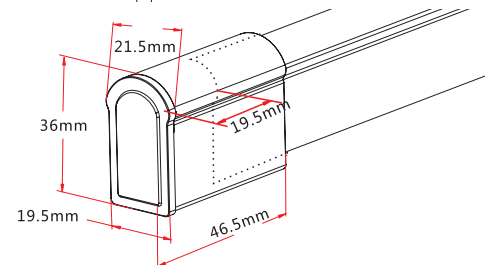
### EZ-Connect End Entry

Connects FloppyFlex Large to power supply with user-installable end feed cable, IP67.  
Cable length available in 0.3 m, 1 m, 3 m, 5 m, 10 m.



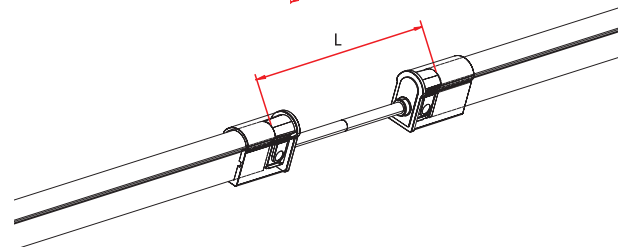
### EZ-Connect End Cap

User-installable termination protection of FloppyFlex Large, IP67.



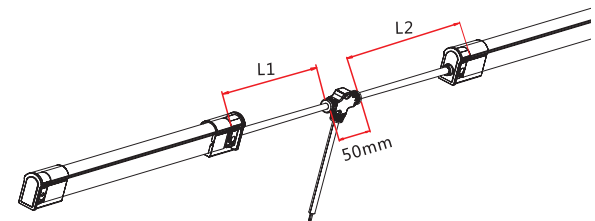
### EZ-Connect End Entry

Connects two pieces of FloppyFlex Large together with a flexible cable, user-installable, IP67.  
Cable length available in 0.3 m, 1 m, and 3 m.



### EZ-Connect T-Feed

Connects two pieces of FloppyFlex Large together with powered T-joint, user-installable, IP67.  
L1 and L2 length available in 0.3 m.  
L3 length available in 1 m



**Exclusive Distribution – The Americas, Europe, and Asia**

sales@tmb.com

Los Angeles  
+1 818.899.8818

London  
+44 (0)20.8574.9700

**tmb**  
www.tmb.com

New York  
+1 201.896.8600

Beijing  
+86 10.8492.1587

Toronto  
+1 519.538.0888



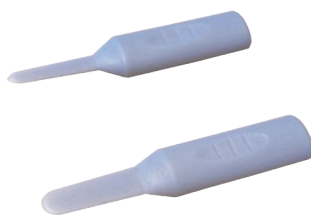
The FloppyFlex Mini Tool Kit includes the tools needed to properly cut and terminate FloppyFlex LED Neon with EZ-Connect field-installable connectors. Correct installation ensures proper electrical contact, IP rating integrity, and warranty compliance.

Includes cutter, insertion spreaders, and grippers.

We recommend using these tools for optimum installation results and reduced risk of damage to the product.



Cutter



Insertion Spreaders



Grippers

**Exclusive Distribution – The Americas, Europe, and Asia**

**sales@tmb.com**

Los Angeles  
+1 818.899.8818

London  
+44 (0)20.8574.9700

**tmb**  
**www.tmb.com**

New York  
+1 201.896.8600

Beijing  
+86 10.8492.1587

Toronto  
+1 519.538.0888



### FloppyDrive Digital DIN Rail Mount

- DMX multi-pixel dimming for FloppyFlex Digital RGB or RGBW
- Addressing, monitoring and reporting of all functions, via RDM
- 1200Hz flicker-free refresh rate
- Pluggable Terminal Block (PTB) screw terminals for bare-wire, installation flexibility
- Requires external 24 VDC Power Supply



### FloppyDrive Digital PortableMount

- One 24 VDC, FloppyFlex Digital output. Up to 1x 15-meter run (varies with product type).
- Color LCD Display with easy function control buttons for easy setup and configuration
- Rugged, tour-ready ProPlex "Blue Box" PortableMount chassis. Packaged for extreme conditions. Shock-mounted circuitry. Advanced thermal management
- Heavy-duty yoke for truss mounting. Optional RackMount Kit available.
- RDM functionality for complete system monitoring and addressing via RDM
- Self-healing overcurrent / short circuit protection
- Neutrik connectors throughout

More information and full specification sheets at  
<https://tmb.com/proplex-floppydrives>

**Exclusive Distribution – The Americas, Europe, and Asia**

**sales@tmb.com**

Los Angeles  
+1 818.899.8818

London  
+44 (0)20.8574.9700

**tmb**  
www.tmb.com

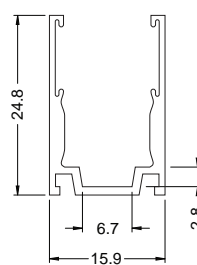
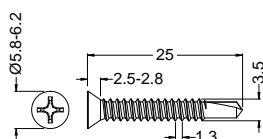
New York  
+1 201.896.8600

Beijing  
+86 10.8492.1587

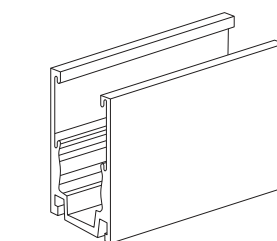
Toronto  
+1 519.538.0888



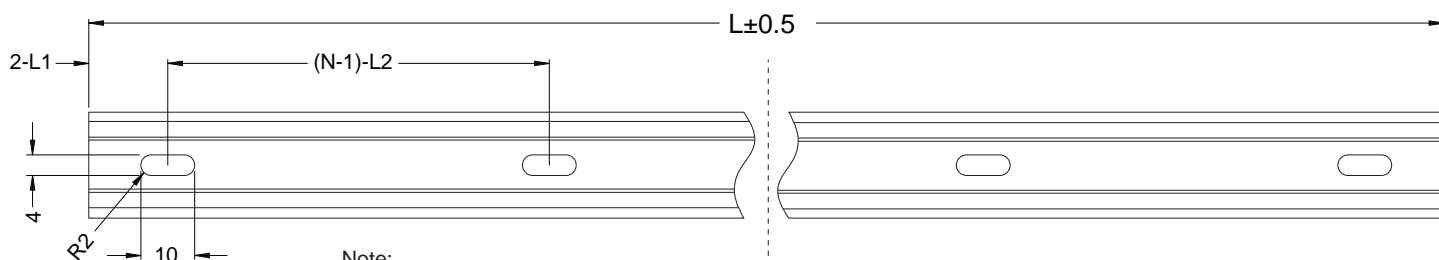
Versatile self-locking profile can be used to mount FloppyFlex Large or Small LED neon in any orientation including overhead at any angle. Extruded 6063 aluminum construction with elastic serrated grip tape hold the FloppyFlex neon firmly through varying temperatures of -20 to +70 °C.



Tolerance:  $\pm 0.2$  mm



Dimensions in millimeters



Note:

1. 2-L1 refers to two of symmetric L1 in each piece of profile.
  2. (N-1)-L2 refers to (N minus one) of symmetric L2 in each piece of profile.
- "N" hereby stands for its corresponding "Hole Number" in the table below.

Part Number	Length	L1	L2	Slotted Hole	Number of Holes
FFACLK20MMV3	20 mm [0.787 in]	10 mm [0.39 in]	N/A	4x10 mm [0.16x0.39 in]	1
FFACLK.5MV3	500 mm [19.68 in]	50 mm [1.97 in]	200 mm [7.87 in]	4x10 mm [0.16x0.39 in]	3
FFACLK1MV3	1000 mm [39.37 in]	100 mm [3.93 in]	200 mm [7.87 in]	4x10 mm [0.16x0.39 in]	5
FFACLK2MV3	2000 mm [78.74 in]	100 mm [3.93 in]	200 mm [7.87 in]	4x10 mm [0.16x0.39 in]	10

Exclusive Distribution – The Americas, Europe, and Asia

sales@tmb.com

Los Angeles  
+1 818.899.8818

London  
+44 (0)20.8574.9700

**tmb**  
www.tmb.com

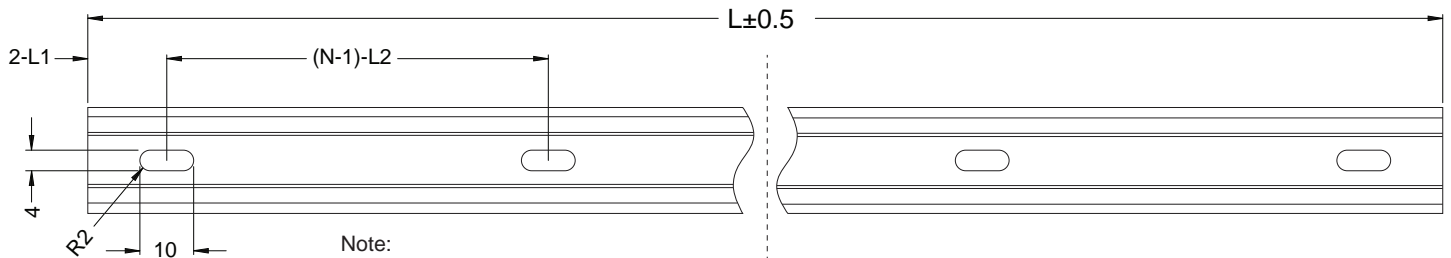
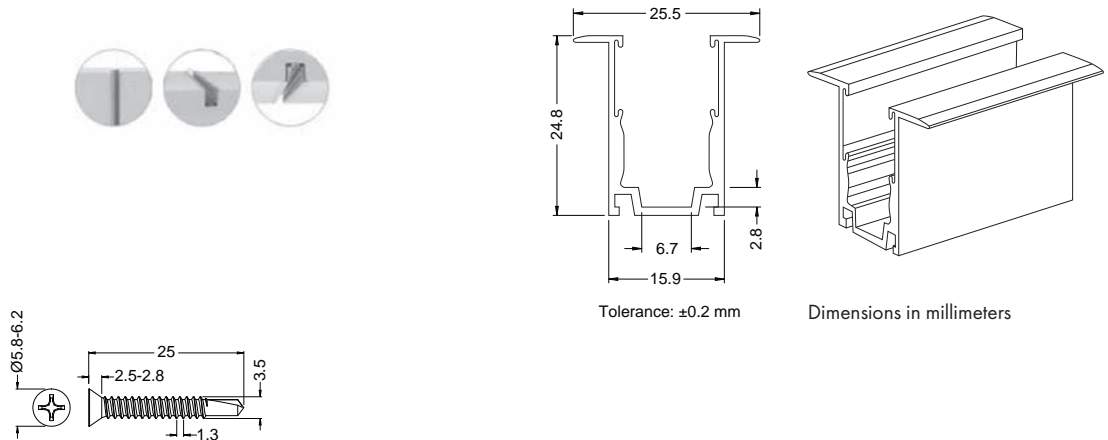
New York  
+1 201.896.8600

Beijing  
+86 10.8492.1587

Toronto  
+1 519.538.0888



Versatile self-locking profile can be used to mount recessed FloppyFlex Large or Small LED neon in any orientation including overhead at any angle. Extruded 6063 aluminum construction with elastic serrated grip tape hold the FloppyFlex neon firmly through varying temperatures of -20 to +70 °C.



Note:

1. 2-L1 refers to two of symmetric L1 in each piece of profile.
  2. (N-1)-L2 refers to (N minus one) of symmetric L2 in each piece of profile.
- "N" hereby stands for its corresponding "Hole Number" in the table below.

Part Number	Length	L1	L2	Slotted Hole	Number of Holes
FFACLKR20MMV3	20 mm [0.787 in]	10 mm [0.39 in]	N/A	4x10 mm [0.16x0.39 in]	1
FFACLKR.5MV3	500 mm [19.68 in]	50 mm [1.97 in]	200 mm [7.87 in]	4x10 mm [0.16x0.39 in]	3
FFACLKR1MV3	1000 mm [39.37 in]	100 mm [3.93 in]	200 mm [7.87 in]	4x10 mm [0.16x0.39 in]	5
FFACLKR2MV3	2000 mm [78.74 in]	100 mm [3.93 in]	200 mm [7.87 in]	4x10 mm [0.16x0.39 in]	10

Exclusive Distribution – The Americas, Europe, and Asia

sales@tmb.com

Los Angeles  
+1 818.899.8818

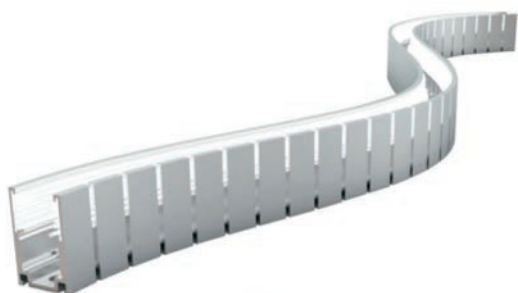
London  
+44 (0)20.8574.9700

**tmb**  
www.tmb.com

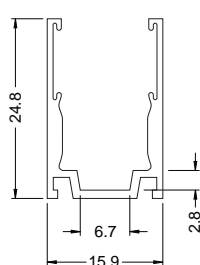
New York  
+1 201.896.8600

Beijing  
+86 10.8492.1587

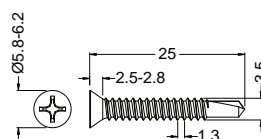
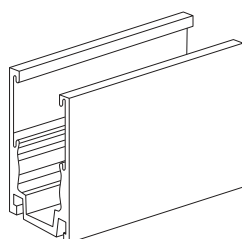
Toronto  
+1 519.538.0888



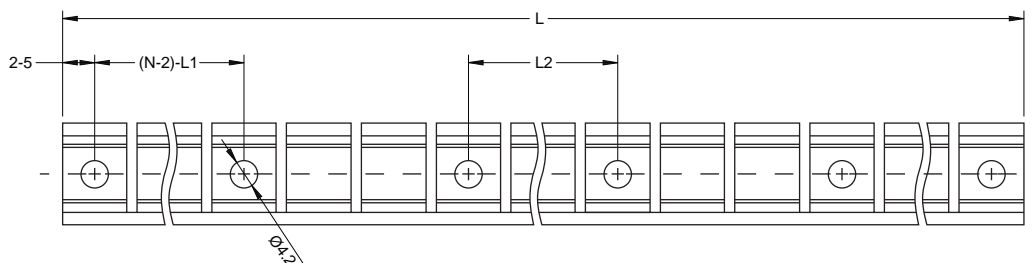
Flexible self-locking profile can be used to mount FloppyFlex Large or Small LED neon in custom freeform curves while maintaining clamping force. May be mounted in any orientation including overhead at any angle.



Tolerance:  $\pm 0.2$  mm



Dimensions in millimeters



Note:

1. 2-5 refers to two of symmetric 5 mm in each piece of profile.
  2. (N-2)-L1 refers to (N minus two) of symmetric L1 in each piece of profile.
- "N" hereby stands for its corresponding "Hole Number" in the table below.

Part Number	Length	L1	L2	Screw Hole	Number of Holes
FFACFLK.5M	500 mm [19.68 in]	116.5 mm [4.59 in]	23.3 mm [0.92 in]	Ø4.2 mm [0.17 in]	6
FFACFLK1M	1000 mm [39.37 in]	116.5 mm [4.59 in]	58.2 mm [2.29 in]	Ø4.2 mm [0.17 in]	10

**Exclusive Distribution – The Americas, Europe, and Asia**

[sales@tmb.com](mailto:sales@tmb.com)

Los Angeles  
+1 818.899.8818

London  
+44 (0)20.8574.9700

**tmb**  
[www.tmb.com](http://www.tmb.com)

New York  
+1 201.896.8600

Beijing  
+86 10.8492.1587

Toronto  
+1 519.538.0888