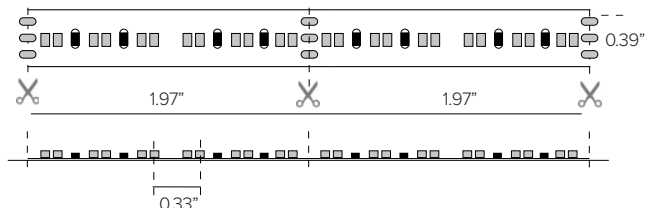


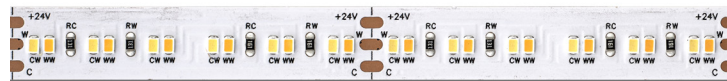
KEY FEATURES

- According to Human Centric Lighting principles, the Kelvin temperature of light has a profound influence on people's emotional state. DURATAPE TUNABLE CCT is fundamental for dynamic white light management to improve the overall environment and the wellbeing of people. Dynamic white light is essential in environments where people remain for a long period of time, such as offices and schools. It is equally useful to create different atmospheres within the same environment such as restaurants and hospitality environments.
- DURATAPE TUNABLE CCT allows for full dynamic control of white light blends ranging from cool to warm kelvin tones, with dimming control independent of color. DURATAPE TUNABLE CCT offers two white color temperature ranges from 1800K to 3500K or from 2700K to 6500K.
- DURATAPE TUNABLE CCT offers two white colour temperature variations from 1800K to 3500K or from 2700K to 6500K.
- Features 2-circuit, double layer of copper sided substrate, for optimum heat dissipation, minimizing voltage drop while increasing run lengths per power feed, standardizing electrical flow over entire length of the strip for maximum product reliability.
- Features double sided solder points for maximum conductivity and durability.
- Sold per foot and manufacturer pre-assembled to specific lengths with various connector options for project requirements and efficient power configurations.
- Max continuous length: up to 16' per run
- Multiple control options available.

DIMENSIONAL DRAWINGS



DESIGN INSTALLATION EXAMPLES



DETAILS

Spacing	0.33" OC Paired LED Spacing
LEDs	68 LEDs per foot arranged as tight pairs of bi-colored sets
Color Temp	1800K – 3500K 2700K – 6500K
Color Consistency	Bin centered on the Planck curve with a 2 step MacAdam tolerance.
CRI	Ra+90
End Preps	Factory prepped end preps available (See Page 2)
Mounting	Includes installation-ready 3M tape adhesive for simplified installation directly to mounting channel or application surface
Installation	Optional mounting channels and clips, protective lens covers, thermal channels for optimal maintainance. Field trimmable every 2"
Power Supply	Listed Class 2 output, 24 VDC power supply required
Listing	cULus Class 2 Listed E471161 Tested in accordance with LM-79-08 Energy efficient for California installations.
Compliance	RoHS compliant
Warranty	5 year warranty

FIXTURE DATA

Model	Efficacy* Lm/Wt	Lm/Ft	Wt/Ft
T1 – 3500K	71	305	4.3
T2 – 6500K	77	329	4.3

* Meets Title 24 High efficacy rating.

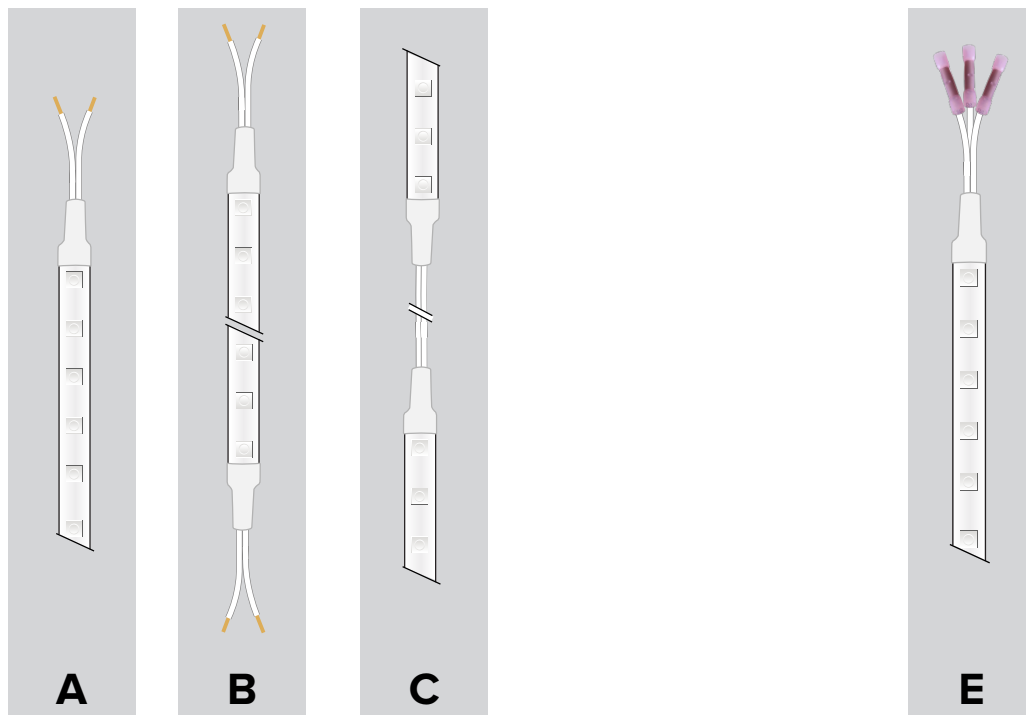
LED DATA

Model	Wt/LED	Viewing Angle	Lifespan at 90% drive
Tunable CCT	0.06W	120°	50,000hrs

* LEDs operating at 90% of LED manufacturers maximum current rating.

PRODUCT CODE	INTENSITY	WATTAGE	IP RATING	COLOR TEMP	CRI	VOLTAGE	END PREP	MOUNTING	POWER SUPPLY
DL — Duratape™	TW — Tunable White	43 — 4.3 W/ft	I — Indoor IP20	T1 — 1800K – 3500K T2 — 2700K – 6500K	HC — +90 CRI	24 — 24 VDC			

END PREPS AND CONNECTORS (REQUIRED) - Choose 1



REQUIRED END PREPS: (One required for each run of tape)

A

07UI2CBL1: END PREP

Factory attached single 2 circuit lead wire prep. 24" three conductor Lead wire/dead end allows for connection to power at lead end and field trim of Duratape product at the other end.

07UI2ADDCBL-XX: ADDITIONAL LEAD WIRE

Additional 2 circuit lead wire purchased per foot and factory attached to specified run leads. Lead wire can be field cut to desired length.

B

07UI2CBL2: END PREP

Factory attached double ended 2 circuit lead wire prep. 24" three conductor lead wire at both ends. One end can be used for power connectivity while the other end can be used for interconnection to run to an additional length of Duratape. **Caution: Pay attention to max run lengths and voltage drops from total lead/fold wire lengths.**

07UI2ADDCBL-XX: ADDITIONAL LEAD WIRE

Additional 2 circuit lead wire purchased per foot and factory attached to specified run leads. Lead wire can be field cut to desired length.

C

07UI2FOLD CBL-XX

Wire fold (specified length). Wire folds are factory attached to Duratape to meet your specified installation requirements. Wire fold lengths available are 1", 2", 3", 4", 6", 12". Add length number to end of part number. **Caution: Pay attention to max run lengths and voltage drops from total lead/fold wire lengths.**

OPTIONAL CONNECTORS:

E

07UI2ADDCON

Additional 2 circuit connectors. Lead wire connectors 3/ea per connection.

PROFILE OPACITY LEVEL KEY:



Uniform
Direct View



Blended
Direct / Indirect View



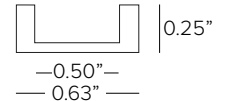
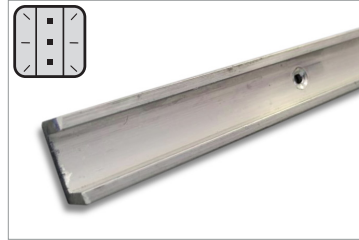
Pixelated
Indirect View

CLIPS AND SURFACE PROFILES



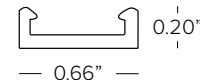
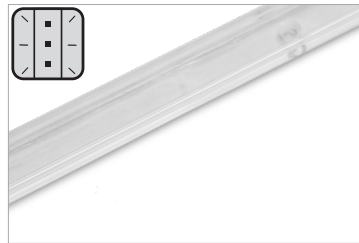
DL-CLP-20

DuraTape ES plastic mounting clip, package of 10 each. Recommended quantities per use: Straight flat run aiming upward 12" O.C. (1/ft); Curved aiming upward or wall mounted straight 6" O.C. (2/ft); Wall mounted curved or ceiling mounted 3" O.C. (4/ft).



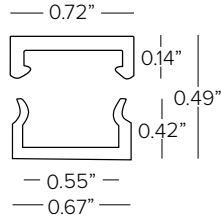
DL-ALUM-U-8

Low profile aluminum U-Profile for linear run lengths. Available in 8ft lengths.



DL-MCHAN-8

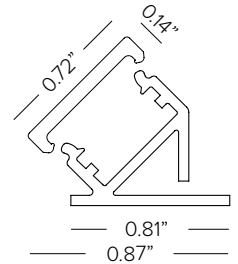
Linear Mounting profile. Available in 8' lengths.



DL-W-2PC-C (Clear)

DL-W-2PC-F10/F30/F60 (Frosted)

Two-piece mounting tube; base (clear) with cover (frosted) for linear applications. Frosted diffusion levels, 10%, 30% or 60%. Available in 4' lengths.



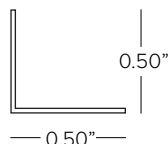
DL-W-45-MCH-4 (Base, REQUIRED)

45° mounting base (white) for 45° mounted linear applications. Available in 4' lengths.

DL-W-45-CVR-4-C (Clear)

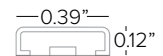
DL-W-45-CVR-4-F10/F30/F60 (Frosted)

45° mounting base cover. Available in 4' lengths.



DL-ALUM-L-8

Aluminum L-Profile 1/2" x 1/2" for linear run lengths. DuraTape can be mounted at either 0° or 90° mounting positions. Available in 8ft lengths.



P01E-S-PF-100

Surface mount polycarbonate diffuser profile designed to protect strips from dirt and allow for perfect maintenance. Available in 3.28ft (1M) lengths.



a brand of TARGETTI

SURFACE PROFILES

DURATAPE™ TUNABLE CCT

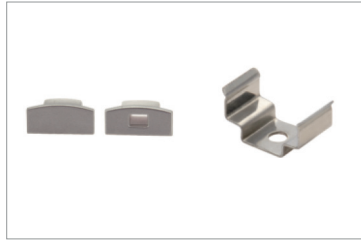
IP20 INDOOR



P01B-S-PF-300

Aluminum profile with white PMMA screen for surface or recessed installation with limited width. Equipped with angle-joint accessory. Available in 118in (3M) lengths.

NOTE: 118 inch lengths must be shipped via freight only. For efficient shipping via UPS/Fedex, lengths can be cut to 59 inch upon request.

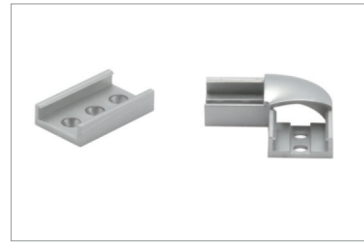
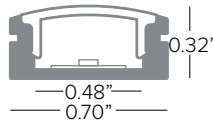


P01B-A-EC

3+3 pc silver end caps.

P01B-A-MC

4 Metal mounting clips.

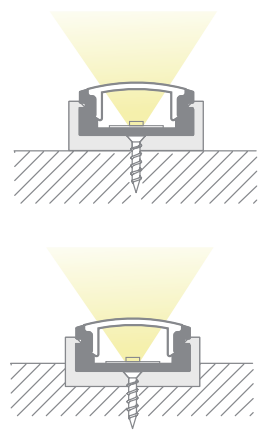


P01B-A-CP

3 pc silver color junction brackets.

P01B-A-CP90

3 pc silver color 90° junction brackets.



P02B-S-PF-300

Aluminum profile with white PMMA screen for surface or recessed installation with limited width. Equipped with angle-joint accessory. Available in 118in (3M) lengths.

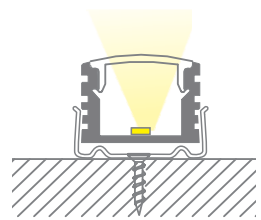
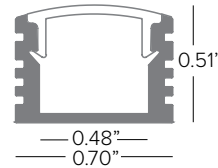


P02B-A-EC

3+3 pc silver end caps.

P02B-A-MC

4 Metal mounting clips.



NOTE: 118 inch lengths must be shipped via freight only. For efficient shipping via UPS/Fedex, lengths can be cut to 59 inch upon request.

SURFACE PROFILES CONT.



P03B-S-PF-300

Aluminum profile with polycarbonate lens with uniform light distribution for surface or recessed with suitable clips. Available in 118in (3M) lengths.

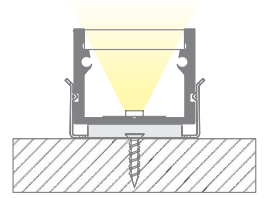
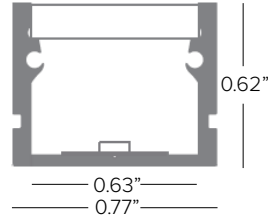


P03B-A-EC

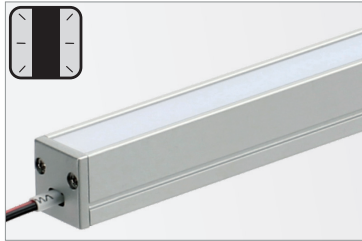
3+3 pc silver end caps.

P03B-A-MC

3 Metal mounting clips.

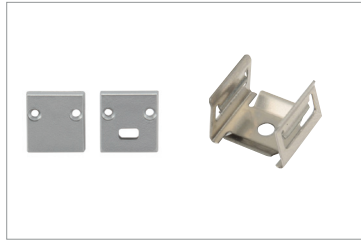


NOTE: 118 inch lengths must be shipped via freight only. For efficient shipping via UPS/Fedex, lengths can be cut to 59 inch upon request.



P04A-S-PF-200

Aluminum profile with polycarbonate screen for surface installation. Available in 79in (2M) lengths.

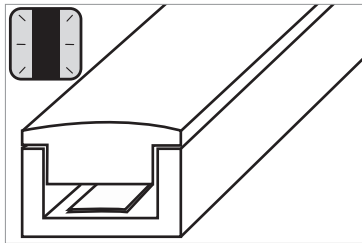
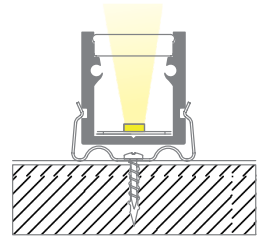
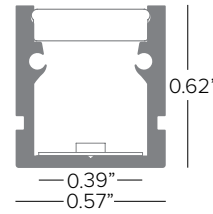


P04A-A-EC

2+2 pc silver end caps.

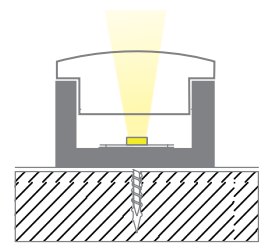
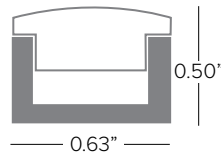
P04A-A-MC

4 Metal mounting clips.



DL-ALUM-C-6

Surface mounted two-piece continuous illumination profile. 1/2"H x 5/8"W aluminum U-channel with 6" OC screw holes. Snap in full diffusion lens for shadowless light distribution. Available in 6ft lengths.



SURFACE PROFILES CONT.

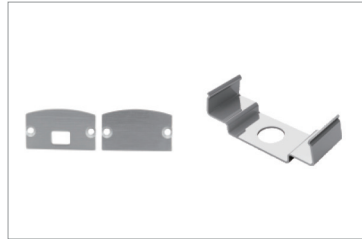
DURATAPE™ TUNABLE CCT

IP20 INDOOR



P04B-S-PF-300

Aluminum profile with polycarbonate screen for surface or recessed with suitable clips. Available in 118in (3M) lengths.

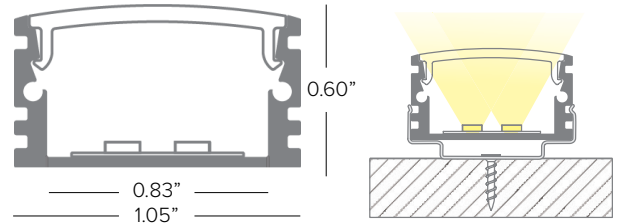


P04B-A-EC

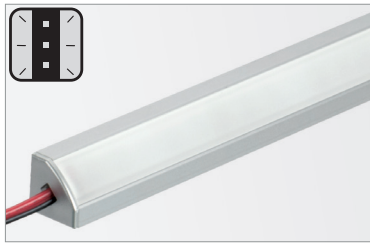
3+3 pc metal end caps.

P04B-A-MC

3 Metal mounting clips.

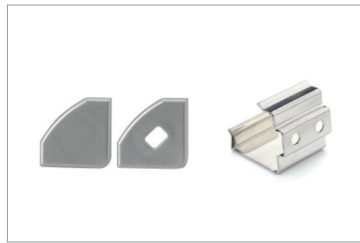


NOTE: 118 inch lengths must be shipped via freight only. For efficient shipping via UPS/Fedex, lengths can be cut to 59 inch upon request.



P03F-S-PF-300

Aluminum profile for surface or recessed corner with suitable clips. Available in 118in (3M) lengths.

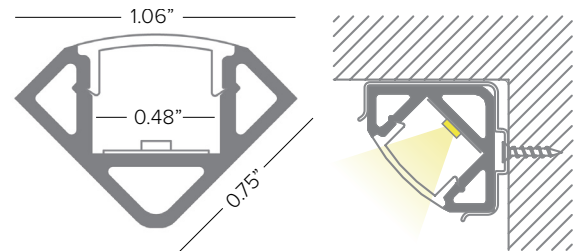


P03F-A-EC

3+3 pc end caps.

P03F-A-MC

3 Metal mounting clips.



NOTE: 118 inch lengths must be shipped via freight only. For efficient shipping via UPS/Fedex, lengths can be cut to 59 inch upon request.



P04F-S-PF-300

Aluminum profile for surface in 90° angles with suitable clips. Available in 118in (3M) lengths.

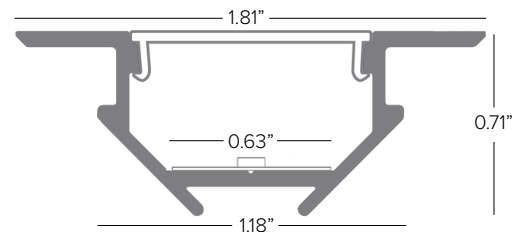


P04F-A-EC

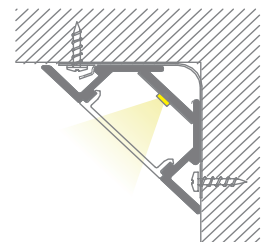
3+3 pc end caps.

P04F-A-MC

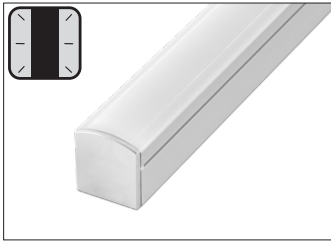
3 Metal mounting clips.



NOTE: 118 inch lengths must be shipped via freight only. For efficient shipping via UPS/Fedex, lengths can be cut to 59 inch upon request.

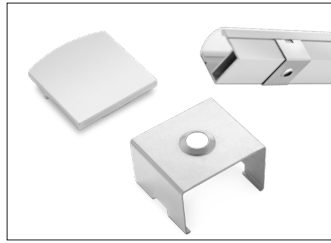


SURFACE PROFILES CONT.



PRAP-U

Surface mount aluminum profile. Anodized aluminum rigid profile complete with opal translucent diffuser cover. Available in 79in (2M) lengths.

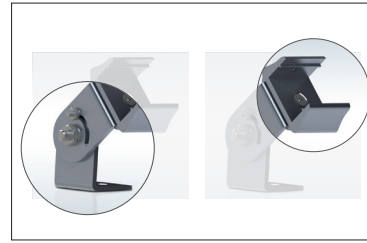


KTPRAP-UEC

5 + 5 silver color end caps

KTPRU-CL

5 sets of clips

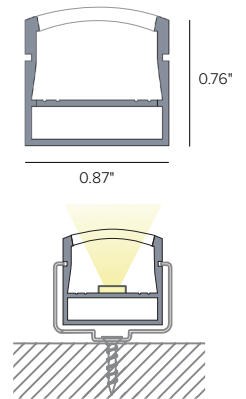


OR-DEV

Set of steel supports required with use of KTORDEV-U.

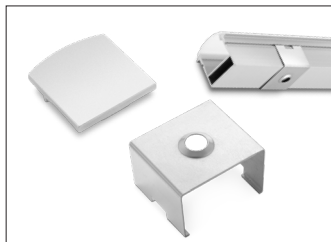
KTORDEV-U

Set of aluminum mounting heads required with use of OR-DEV.



PRIN-U

Flush mount aluminum profile. Anodized aluminum rigid profile complete with opal translucent diffuser cover. Available in 79in (2M) lengths.

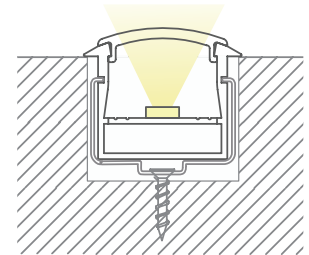
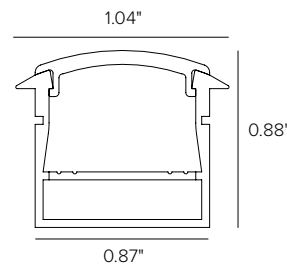


KTPRIN-UEC

5 + 5 silver color end caps

KTPRU-CL

5 sets of clips



PRAN-U

45° aluminum profile. Anodized aluminum rigid profile complete with opal translucent diffuser cover. Available in 79in (2M) lengths.

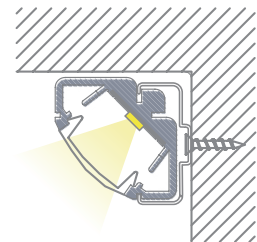
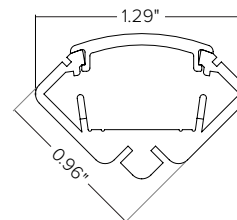


KTPRAN-UEC

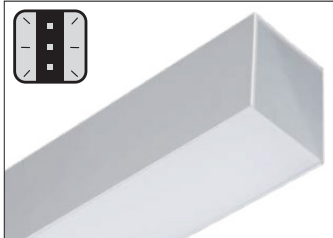
5 + 5 silver color end caps

KTPRAN-UCL

5 sets of clips



SURFACE PROFILES CONT.

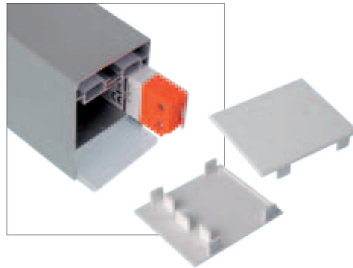


PRDESO

Aluminum profile for surface mount.
Available in 4ft lengths.

PRDESO-SL

Rear support for surface mount.

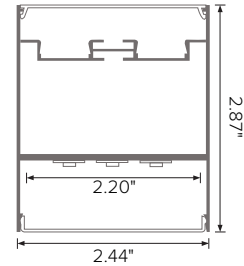


PRDESO-FL

Front screen in flat opal polycarbonate plate.

KTPRDESO-FL

Set of two side end caps flat screen.



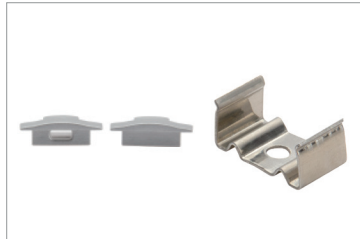
RECESSED PROFILES



P02H-S-PF-300

Aluminum profile with white PMMA screen for recessed installation with limited width.
Available in 118in (3M) lengths.

NOTE: 118 inch lengths must be shipped via freight only. For efficient shipping via UPS/Fedex, lengths can be cut to 59 inch upon request.



P02H-A-EC

3+3 pc silver end caps.

P02H-A-MC

3 Metal mounting clips.

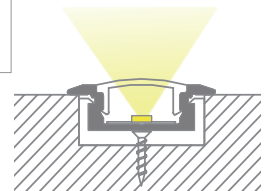
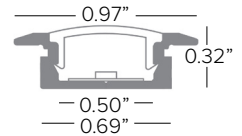


P02H-A-CP

3 pc silver junction brackets.

P02H-A-CP90

3 junction brackets with 90° angle.



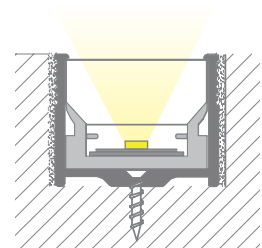
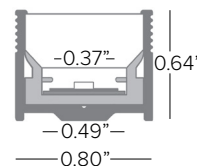
P03E-S-PF-300

Aluminum high impact walk over rated profile with white PMMA screen for recessed installation. Available in 118in (3M) lengths.



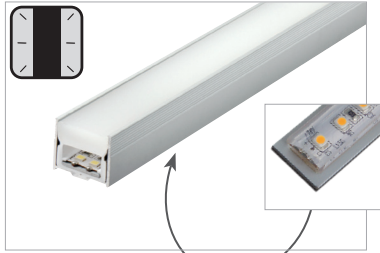
P03E-A-EC

3+3 pc end caps.



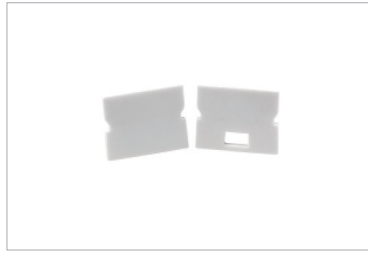
NOTE: 118 inch lengths must be shipped via freight only. For efficient shipping via UPS/Fedex, lengths can be cut to 59 inch upon request.

RECESSED PROFILES CONT.



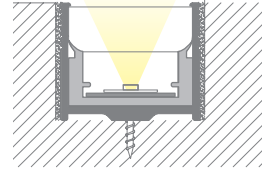
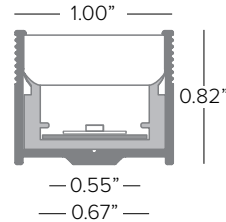
PRINTC-G

Rigid high impact resistant PMMA profile complete with a white plastic diffuser lensed channel for recessed walk over installation. Complete with track for easy strip insertion. Available in 3.28ft (1M) lengths.



KTRPRINTC-G

2+2 PC end caps



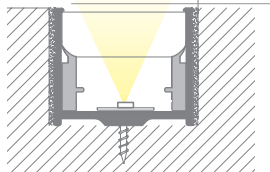
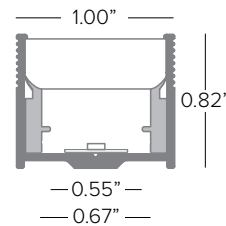
PRINTC-GUS

Rigid high impact resistant PMMA profile complete with two part white plastic diffuser lens and aluminum channel for surface or recessed mounting. Available in 3.28ft (1M) lengths.



KTRPRINTC-G

2+2 PC end caps



P04H-S-PF-300

Aluminum profile with white polycarbonate screen for recessed installation. Available in 118in (3M) lengths.

NOTE: 118 inch lengths must be shipped via freight only. For efficient shipping via UPS/Fedex, lengths can be cut to 59 inch upon request.



P04H-A-EC

3+3 pc silver end caps.

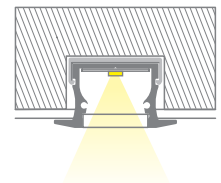
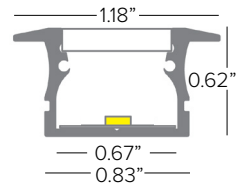
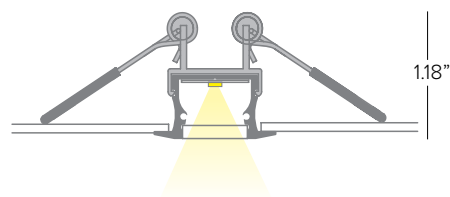
P04H-A-MC

3 Metal mounting clips.



P04H-A-FS

3 pc metal ceiling attachment springs.



RECESSED PROFILES CONT.



P04H-S-PF-300

Aluminum profile with white polycarbonate screen for recessed installation. Available in 118in (3M) lengths.

NOTE: 118 inch lengths must be shipped via freight only. For efficient shipping via UPS/Fedex, lengths can be cut to 59 inch upon request.



P04H-A-EC

3+3 pc silver end caps.

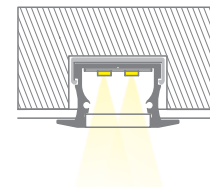
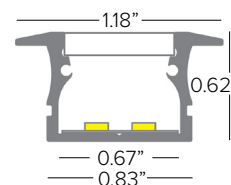
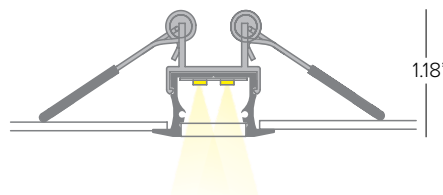
P04H-A-MC

3 Metal mounting clips.



P04H-A-FS

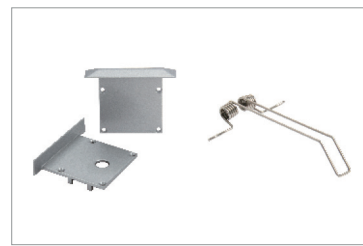
3 pc metal ceiling attachment springs.



P08D-S-PF-300

Aluminum profile with white PMMA screen for recessed installation. Available in 118in (3M) lengths.

Max of (3) strips per profile.

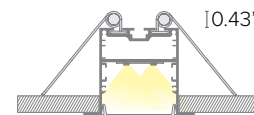
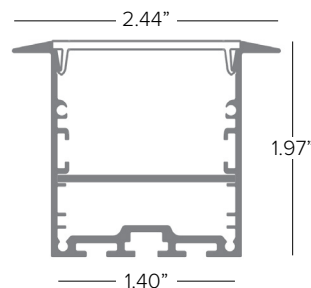


P08D-A-EC

3+3 pc silver end caps.

P08D-A-SP

3 pc metal ceiling attachment springs.



NOTE: 118 inch lengths must be shipped via freight only. For efficient shipping via UPS/Fedex, lengths can be cut to 59 inch upon request.

PLASTER RECESSED PROFILES



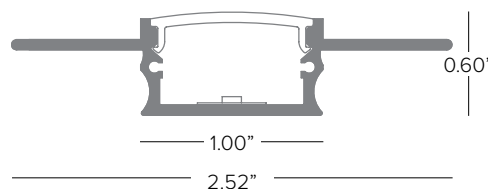
PRINC-G

Flush Mount aluminum profile for installation in plasterboard. Complete with white lens. Available in 79in (2M) lengths.

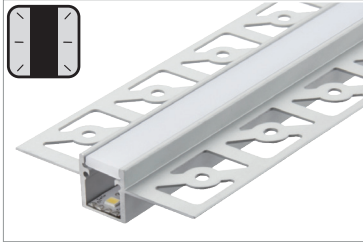


KTPRINC-G

2+2 PC end caps



PLASTER RECESSED PROFILES CONT.



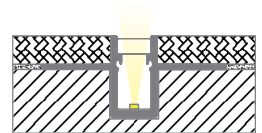
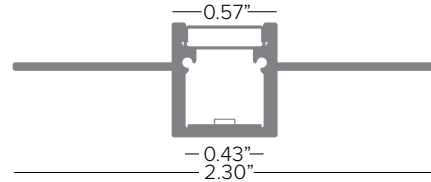
P05B-S-PF-300

Aluminum profile with white PMMA screen for trimmed plaster-in flush recessed installation. Available in 118in (3M) lengths.



P05B-A-EC

3+3 pc end caps.



NOTE: 118 inch lengths must be shipped via freight only. For efficient shipping via UPS/Fedex, lengths can be cut to 59 inch upon request.

ADJUSTABLE PROFILES



P02C-S-PF-300

180° adjustable aluminum profile with wall washer function for surface with suitable clips. Available in 118in (3M) lengths.

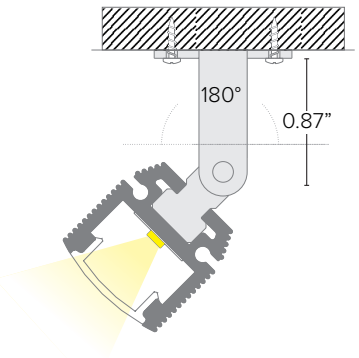
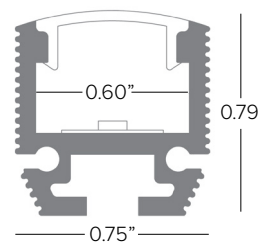


P02C-A-EC

3+3 metal end caps.

P02C-A-OB

3 Metal adjustable brackets.

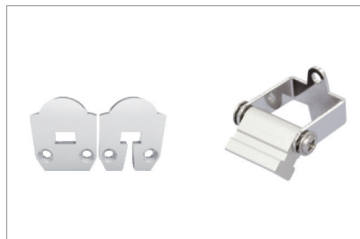


NOTE: 118 inch lengths must be shipped via freight only. For efficient shipping via UPS/Fedex, lengths can be cut to 59 inch upon request.



P03C-S-PF-300

180° adjustable aluminum profile with wall washer function for surface with suitable clips. Lens shape creates narrower spread. Available in 118in (3M) lengths.

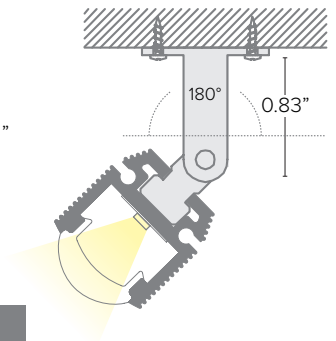
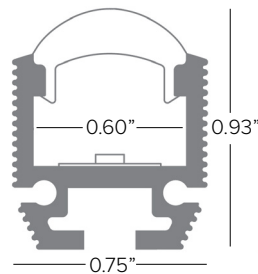


P03C-A-EC

3+3 metal end caps.

P03C-A-OB

6 Metal adjustable brackets.



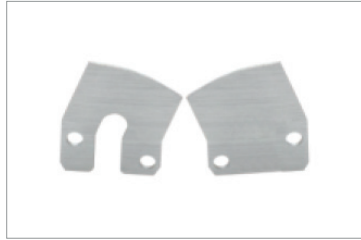
NOTE: 118 inch lengths must be shipped via freight only. For efficient shipping via UPS/Fedex, lengths can be cut to 59 inch upon request.

ADJUSTABLE PROFILES CONT.



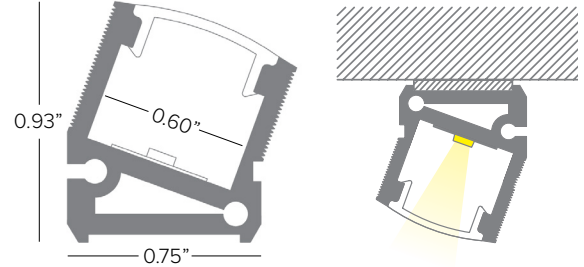
P04C-S-PF-300

Fixed profile at 30° with a wall washer function for surface installation. Available in 118in (3M) lengths.



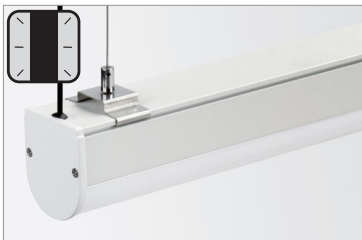
P04C-A-EC

3+3 metal end caps.



NOTE: 118 inch lengths must be shipped via freight only. For efficient shipping via UPS/Fedex, lengths can be cut to 59 inch upon request.

SUSPENDED PROFILES

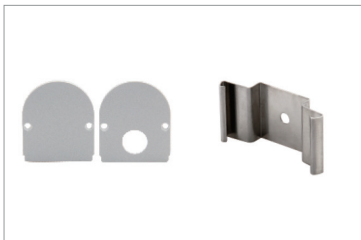


P07A-S-PF-300

Aluminum profile with white polycarbonate screen for surface or suspension installation. Available in 118in (3M) lengths.

NOTE: 118 inch lengths must be shipped via freight only. For efficient shipping via UPS/Fedex, lengths can be cut to 59 inch upon request.

Max of (3) strips per profile.



P07A-A-EC

3+3 pc white end caps.

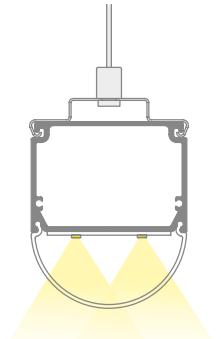
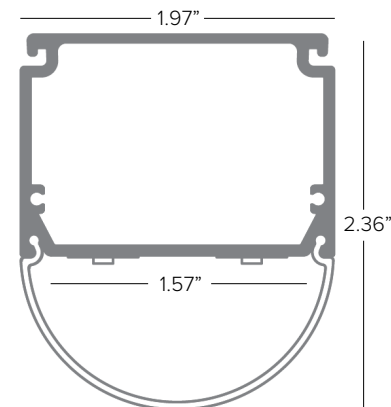
P07A-A-MC

6 Metal mounting clips.
(One set recommended for every 4ft)

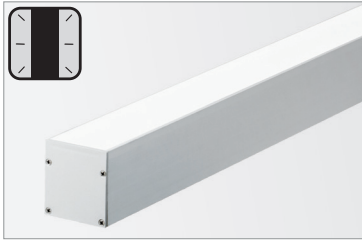


P07A-A-FS

3 pc metal suspension cables.



SUSPENDED PROFILES CONT.



P01L-S-PF-300

Aluminum profile with white polycarbonate screen for suspension installation. Available in 118in (3M) lengths.

NOTE: 118 inch lengths must be shipped via freight only. For efficient shipping via UPS/Fedex, lengths can be cut to 59 inch upon request.

Max of (3) strips per profile.



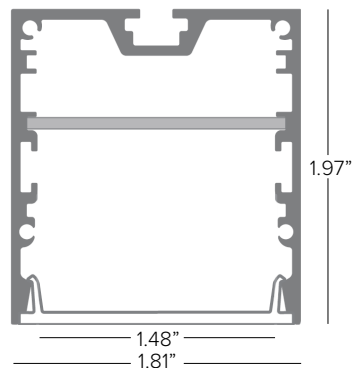
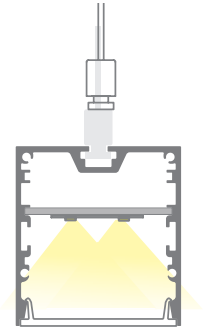
P01L-A-EC

3+3 pc silver end caps.



P01L-A-FS

3 pc metal suspension cables.



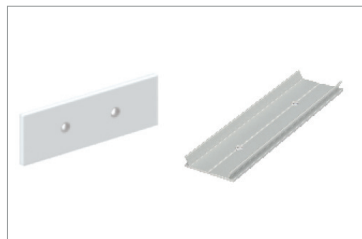
DECORATIVE PROFILES



P06A-S-PF-300

Aluminum profile with white PMMA screens for wall installation with wall washer effect upwards and downwards. Available in 118in (3M) lengths.

Max of (2) strips per profile direction.



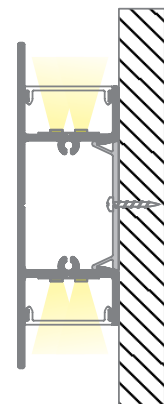
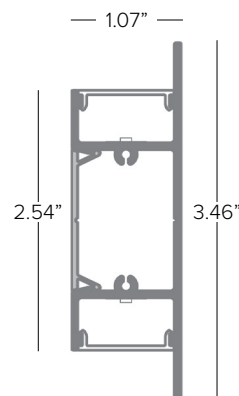
P06A-A-EC

3+3 pc silver end caps.

P06A-A-MC

1 set of metal brackets.

NOTE: 118 inch lengths must be shipped via freight only. For efficient shipping via UPS/Fedex, lengths can be cut to 59 inch upon request.





a brand of TARGETTI

DURATAPE™ TUNABLE CCT

IP20 INDOOR

Power Supply (REQUIRED)	Type	Wattage	Input/Output Voltage	Dimmable	IP Rating	Output	Dimensions
DEDDI1001242CDMX	ELECTRONIC ADDRESSABLE DMX DRIVER	100W	120-277V / 24V	DMX DIMMING 2 CHANNEL	NEMA1 ENCLOSURE	UL CLASS 2	12" x 12" x 4" ¹
DEDDI2002242CDMX	ELECTRONIC ADDRESSABLE DMX DRIVER	2X100W	120-277V / 24V	DMX CONTROL 2 CHANNEL	NEMA1 ENCLOSURE	UL CLASS 2	12" x 12" x 4" ¹

¹ Dimensions include enclosure with mounting bracket.

* Constant voltage drivers 50/60HZ, voltage regulated with short circuit protection. Operating temperature -40 C- 80° C

* Installation of power supply must be compliant to Class 2 installation standards. Refer to NEC and local building code requirements.

MAXIMUM INTERCONNECTED TAPE LENGTH PER DRIVER

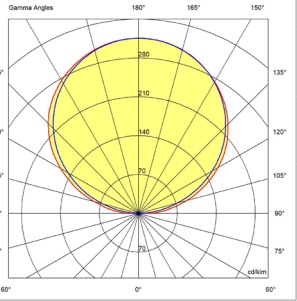
Fixture Wattage	Driver Wattage	
	100W	2X100
4.3W/ft	20FT	(2) 20FT

Controller (Optional)	Type	Application	Voltage	Listing	Dimensions	# of DMX Channels	Number of Zones	Number of Scenes
SWITCH23	CCT Touch DMX512 Wall Control Panel with Sensitive Glass Touch Panel, White Finish	Indoor Only	12-24V DC	UL	4.73"H x 2.95"W x 1.15"D	2	1	6



SWITCH23

PHOTOMETRY

DURATAPE CCT			POLAR GRAPH
Fixture Power	4.3W	4.3W	
Fixture Output	305Lm	329Lm	
Kelvin Temp	1800-3500K	2700-6500K	
Beam Spread	120°	120°	
IMax	316cd/klm	316cd/klm	
Efficacy	71 Lm/W	77 Lm/W	