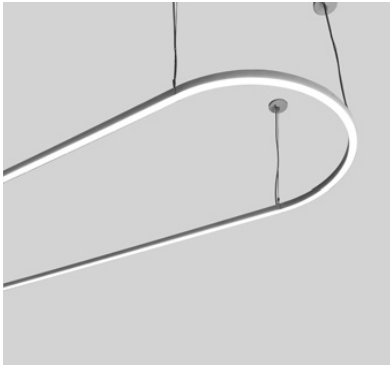


# DOS curve

LED direct/indirect circular & linear modules with opal acrylic lenses

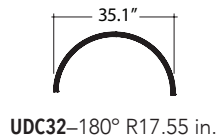
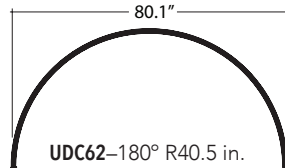
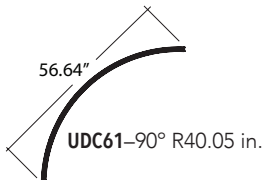
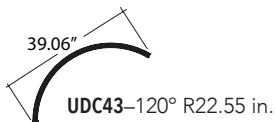
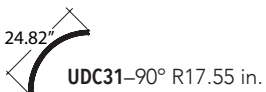


### CONSTRUCTION

- Extruded aluminum outer housing
- Direct/indirect white frosted acrylic diffuser.
- 8 ft. gray or white 18 AWG adjustable power cord and AC cables. Push button grippers supplied, standard. Specify **XP** for additional length (25 ft. max.).
- Drivers and DMX module installed in surface mount canopy. For remote driver installation, see below.
- cUL listed for dry locations only.

CURVED MODEL#	CURVED MODEL#	FINISH	LEDS	MOUNT STYLE	DIMMING	OPTION
UDC31-90° R17 in. UDC61-90° R37 in. UDC43-120° R22 in. UDC32-180° R17 in. UDC62-180° R37 in.	UDLC2-2 ft. UDLC3-3 ft. UDLC4-4 ft. UDLC5-5 ft. UDLC6-6 ft.	S-Silver W-White K-Black  BW-Barn Wood CB-Carbon Fiber ES-Espresso HO-Honey Oak M-Maple SD-Silver Driftwood SL-Saddle Leather DC-Dark Cherry KL-Tan Leather TL-Khaki Leather	W30 W35 W40 Red Blue SQ-RGB	R-Remote EM-Emergency	D-Standard BDIM-W11	SS

BTRAXW-Traxon Light Drive (enter quantity)	XP-Extra power cord (in inches, 25 ft. max.)
XL- custom lumen reduction (specify lumens)	UDCLEND- end cap (enter quantity):



UDLC2-2 ft. (23.5")

UDLC3-3 ft. (35.4")

UDLC4-4 ft. (47.25")

UDLC6-6 ft. (70.8")

UDLC8-8 ft. (95.5")

# DOS curve

LED direct/indirect circular & linear modules with opal acrylic lenses



### WHITE LEDS

Nichia Corp. NFSL757 tight bin chips on aluminum boards. 90 CRI. Specify color: W30–3000° Kelvin, W35–3500° Kelvin, or W40–4000° Kelvin.

### DIMMING

- o **D**—standard supplied driver. 0–10V, programmable, 1% dimming, 120/277V, 50/60 Hz.
- o **BDIM-W11**—Lutron EcoSystem LED14 Series, 1% dimming, fade-to-off. Remote (**SR**, **CR**, **NCR**) install only.

### CUSTOM LUMEN OUTPUT REDUCTION

Factory set custom reduced-lumen output driver configuration. Order **XL**. Specify lumens.

### SEPARATE SWITCHING

Direct and indirect LEDs may be different colors. Order **SS**.

### WATTS / mA / LUMENS

CURVED MODULES	mA	WATTS	DELIVERED LUMENS
<b>UDC31</b> –90° R17 in.	600	24	2,045
<b>UDC61</b> –90° R37 in.	1,200	49	4,100
<b>UDC43</b> –120° R22 in.	1,100	43	3,630
<b>UDC32</b> –180° R17 in.	1,200	44	4,100
<b>UDC62</b> –180° R37 in.	2,400	98	8,200
LINEAR MODULES	mA	WATTS	DELIVERED LUMENS
<b>UDLC2</b> –2 ft.	430	20	1,732
<b>UDLC3</b> –3 ft.	650	30	2,585
<b>UDLC4</b> –4 ft.	860	40	3,465
<b>UDLC6</b> –6 ft.	1,300	60	5,170
<b>UDLC8</b> –8 ft.	1,700	80	6,930

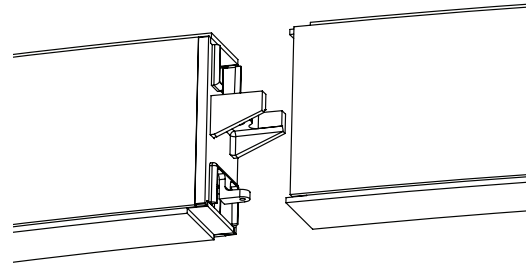


### END CAP

To terminate end modules only. Order **UDCLEND**.

### JOINER

Joins two modules in the field.



### REMOTE DRIVERS

Driver must be accessible after installation. For suspended and hard lid ceilings with access panels. Canopy mounts to mud ring attached to J-box.

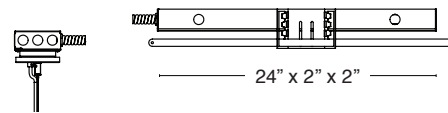
**NOTE:** Multiple drivers must be mounted no less than 4 inches apart side-by-side, and 1 inch apart end-to-end, to avoid overheating.

Standard pendant length: 8 ft. Specify XP for extra pendant. Maximum canopy to fixture distance: 25 ft. Maximum canopy to driver distance: 100 ft. (with 10 AWG wire).



Remote Driver Canopy  
3.8 x 0.45 in.

### R – Remote driver installation



### EM – Emergency

Emergency battery pack provides 7W for 90 minutes. (12W also available.) Remote install only. Red driver light and test switch mounted in handy box installed at ceiling. Increases remote driver size to 36" length.

### TRAXON LIGHT DRIVE\*\*

#### BTRAXW—white faceplate

- o Standalone, wall-mounted (12V power supply included) DMX controller for RGB LED that provides direct access to fixtures.
- o Tune color and brightness with the Light-Drive wheel.
- o Fully dimmable white mode button.
- o See [www.traxon-usa.com](http://www.traxon-usa.com) for details.

### AIRCRAFT CABLE

**NOTE:** Not recommended for outdoor use, where fixture will be exposed to water, or subject to wind oscillation. Avoid use near HVAC vents and in environments with corrosive chemical vapors, such as swimming pools.

### ACRYLIC DIFFUSER CLEANING

**WARNING:** Do not clean with ammonia based cleaners (e.g. Windex®). Use only water or cleaners specifically formulated for cleaning plastics.

# DOS curve

LED direct/indirect circular & linear modules with opal acrylic lenses



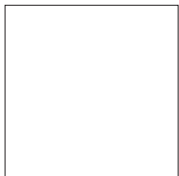
## PAINT FINISHES

SWATCH

FINISH NO.



S-Silver



W-white



K-Black

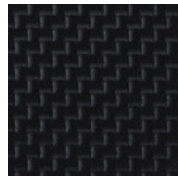
## TEXTURED FINISHES

SWATCH

FINISH NO.



BW-Barnwood



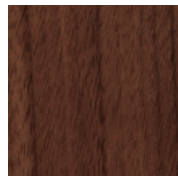
CB-Carbon Fiber



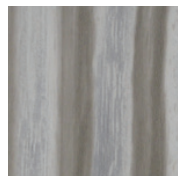
ES-Espresso



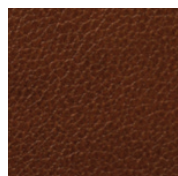
HO-Honey Oak



M-Maple



SD-Silver Driftwood

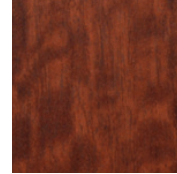


SL-Saddle Leather

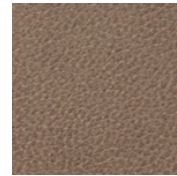
## PREMIUM TEXTURED FINISHES

SWATCH

FINISH NO.



DC-Dark Cherry



TL-Tan Leather



KL-Khaki Leather