

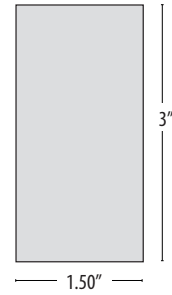
# COMPLETA linear

direct linear LED pendant with white acrylic lens



### CONSTRUCTION

- Extruded aluminum housing.
- Direct, wide beam spread white frosted acrylic diffuser.
- Suspended with 8 ft. gray or white 18 AWG power cord and field-adjustable aircraft cables with push button grippers, supplied standard. Specify **XP** for additional length. (25 ft. maximum.)
- Driver mounts to ceiling, with conduit feed to any side. Replaces J-box for clean appearance in open ceiling installs.
- cUL listed for dry locations only.

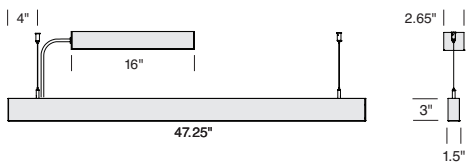


End Cap (1:2 scale)

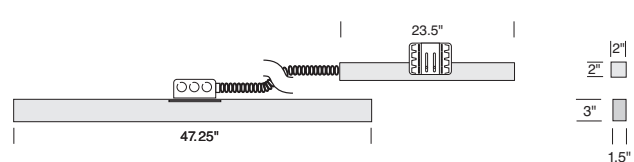
MODEL#	LENGTH	LEDS	LO/HO	DRIVERS	EMERGENCY	OPTION
ST2P-Pendant	2-2 ft.	W30	LO	D-Standard	EM-Emergency	SLRD
ST2PM-Pendant Middle	3-3 ft.	W35	HO	BDIM-W11		S100P
ST2S-Surface	4-4 ft.	W40		BDXMOD		
ST2SM-Surface Middle	6-6 ft. 8-8 ft	Red Blue SQ-RGB				

BTRAXW-Traxon Light Drive (enter quantity):		XP-Extra power cord (in inches, 25 ft. max.):	
		XL-Custom Lumen Output (specify lumens):	

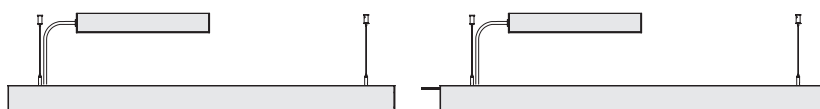
ST2P – 4 ft., Pendant



ST2S – 4 ft., Surface



### COMPLETA CONNECTING SECTIONS



PENDANT

PENDANT MIDDLE

MODEL #	SIZE	LENGTH	MODEL #	SIZE	LENGTH
ST2P2	2 ft.	23.50"	ST2PM2	2 ft.	23.50"
ST2P3	3 ft.	35.40"	ST2PM3	3 ft.	35.40"
ST2P4	4 ft.	47.25"	ST2PM4	4 ft.	47.25"
ST2P6	6 ft.	70.80"	ST2PM6	6 ft.	70.80"
ST2P8	8 ft.	94.50"	ST2PM8	8 ft.	94.50"

# COMPLETA linear

direct linear LED pendant with white acrylic lens



## WHITE LEDS

Nichia Corp. NFSL757 linear board chips. 90 CRI. Specify color: W30–3000° Kelvin, W35–3500° Kelvin, or W40–4000° Kelvin.

## COLOR LEDS

Flexible 5050 tapelights. Specify **R**–Red, **B**–Blue, or **SQ**–RGB Sequencer. **SQ** includes **BDMXMOD**–DMX 512 RGB interface; or order **BTRAXW**–Traxon Light Drive DMX wall box separately.\*\*

12V constant voltage driver for single color, 24V for RGB sequencer.

## DIMMING

- **D**–standard supplied driver. 0–10V, programmable, 1% dimming, 120/277V, 50/60 Hz.
- **BDIM-W11**–Lutron EcoSystem LED14 Series, 1% dimming, fade-to-off.

## CUSTOM LUMEN OUTPUT REDUCTION

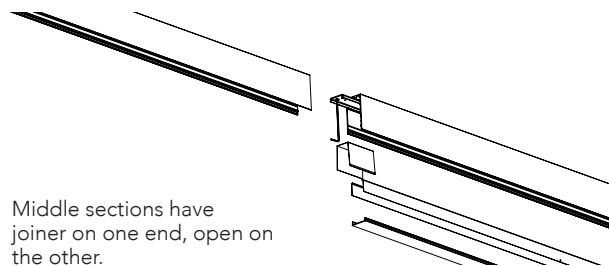
Factory set custom reduced-lumen output driver configuration. Order **XL**. Specify lumens.

## WATTS / LUMENS

LENGTH	LO		HO	
	WATTS	DELIVERED LUMENS	WATTS	DELIVERED LUMENS
2 ft.	10	819	15	1,222
3 ft.	15	1,222	22	1,833
4 ft.	20	1,638	30	2,444
6 ft.	30	2,444	44	3,666
8 ft.	40	3,276	60	4,888

## CONTINUOUS MOUNT

Start and Middle sections include joiner **UJ**.



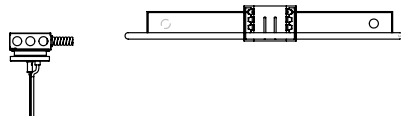
Middle sections have joiner on one end, open on the other.

## REMOTE DRIVERS

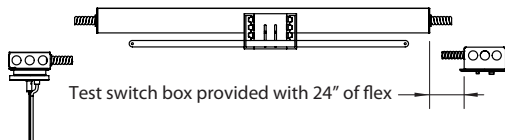
Drivers must be accessible after installation. Multiple driver housings must be mounted no closer than 4" apart side-by-side, or 1" apart end-to-end, to avoid overheating. Driver to canopy distance should not exceed 100 ft., using 10 AWG wire.

**SLRD**: Standard remote housing has no bar hangers and mounts to structure with screws. Dimensions: 24" length, 2.36" height, 2.65" width.

**SLRDTB**: Remote housing for T-bar ceiling includes bar hangers. Dimensions: 27" length, 3.4" height, 4.25" width.



**EM/SLRDTB**: Remote **EM** housing for T-bar ceiling includes bar hangers and remote test switch. Dimensions: 36" length, 3.4" height, 4.25" width. **EM** provides 10W for 90 minutes.

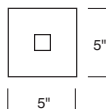


## DRIVER HOUSING DIMENSIONS

Standard: 16" x 2.36"  
Standard **EM**: 35.5" x 1.9"

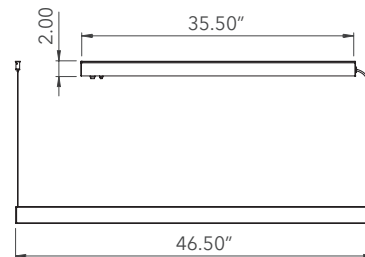
## OPTIONAL J-BOX COVER

Cover plate mounts to maximum 4" square J-box. Ballast housing mounts to wall on top of cover plate, which may be painted to match ceiling or wall, and includes two mounting spacers to offset cover thickness. Order **S100P**.



## EMERGENCY BATTERY PACK

For 4' through 8' fixtures only. 10W for 90 minutes. Adds additional length to driver housing.



## TRAXON/OSRAM LIGHT DRIVE\*\*

**BTRAXW**–white faceplate

- Standalone, wall-mounted (12V power supply included) DMX controller for RGBW LED that provides direct access to fixtures.
- Tune color and brightness with the Light-Drive wheel.
- Fully dimmable white mode button.
- See <http://www.osram.com/ecue> for details.

## AIRCRAFT CABLE

**NOTE**: Not recommended for outdoor use, where fixture will be exposed to water, or subject to wind oscillation. Avoid use near HVAC vents and in environments with corrosive chemical vapors, such as swimming pools.

## ACRYLIC DIFFUSER CLEANING

**WARNING**: Do not clean with ammonia based cleaners (e.g. Windex®). Use only water or cleaners specifically formulated for cleaning plastics.