

|                 |  |   |      |
|-----------------|--|---|------|
| sixteen5hundred | Project 21-12877-3 Date 6/25/2021<br>RGB/W   Saturated Color<br>Submitted By<br>16500, INC | Catalog Number<br>DL HO 44 O RGBW 24<br>Notes | Type |
|-----------------|--|---|------|



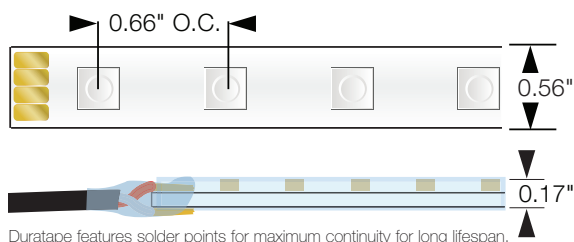
## DURATAPE™ HO OUTDOOR RGB+W

High Output RGB+W Tapelight  
High output outdoor RGB and RGB+W LED Tapelight strip emits sharp, color changing effects in outdoor niche, cove and architectural decorative applications.

### Key Features

- Flexible flat conductor strip with High Output Red 625nm, Green: 520nm, Blue: 465nm + 3000°K White LEDs, RGB colors can be used together with White LED to create different tone of White or soften the RGB color pallet
- Ideal for exterior cove, under-counter/cabinet, lighting accents
- Complete with encased silicone jacket for outdoor rated IP66
- Sold per foot and manufactured to specified lengths with factory attached end preps
- All Duratape features 2-circuit substrate for optimum heat dissipation, minimizing voltage drop while increasing run lengths per power feed, standardizing electrical flow over entire length of the strip for maximum product reliability
- All Duratape features double sided solder points for maximum conductivity and durability
- Pre-assembled to specific lengths with various connector options for project requirements and efficient power configuration
- Max continuous length: up to 16' per run
- DMX 512 interface available (See pg. 6)

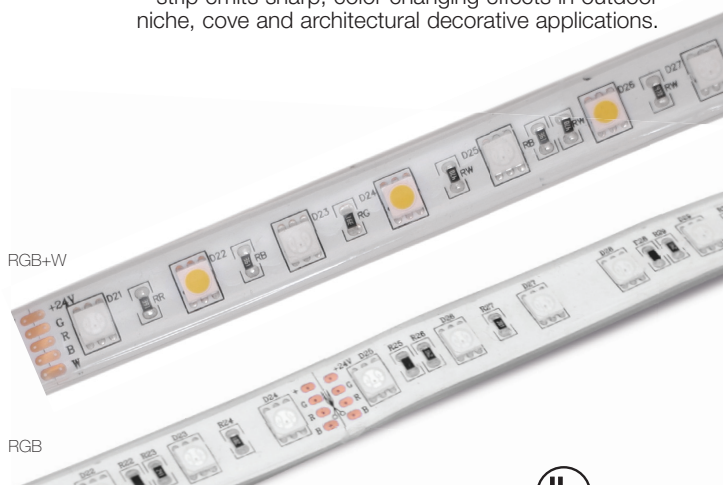
### Dimensional Drawings



### LED Data

| Wattage       | Viewing Angle | Lifespan at 90% drive |
|---------------|---------------|-----------------------|
| 0.24W per LED | 120°          | 40,000hrs             |

\* LEDs operating at 90% of LED manufacturers maximum current rating.



### Details

|              |   |
|--------------|---|
| Spacing      | 0.66" OC LED Spacing  |
| LEDs         | 18 LEDs per foot  |
| End Preps    | Factory preped end preps available (See Page 2)   |
| Field Cuts   | See page 2 for cut zones  |
| Mounting     | Includes installation-ready 3M tape adhesive for simplified installation directly to mounting channel or application surface                |
| Installation | Optional aluminum channels with base and cover (for damp weather protected areas only) can be used to install decorative, protective covers |
| Power Supply | Listed Class II 24 VDC power supply required  |
| Listing      | cULus / CE listed   |
| Compliance   | ROHS compliant  |
| Warranty     | 3 year warranty   |

### Fixture Data

| Model | Efficacy Lm/Wt | Lm/Ft | Wt/Ft | Wt/LED |
|-------|----------------|-------|-------|--------|
| RGB   | 36.60          | 147.6 | 4.4   | 0.24   |
| RGB+W | 42.00          | 184.5 | 4.4   | 0.24   |

### Ordering Guide

| MODEL     | INTENSITY        | WATTAGE       | IP RATING        | LED COLOR   | VOLTAGE     |
|-----------|------------------|---------------|------------------|---|-------------|
| DL        | HO               | 44            | O                |   | 24          |
| Duratape™ | HO = High Output | 44 = 4.4 W/ft | O = Outdoor IP66 | RGB = Red: 625nm<br>Green: 520nm<br>Blue: 450nm<br>RGBW = Red: 625nm<br>Green: 520nm<br>Blue: 450nm<br>3000°K White | 24 = 24 VDC |

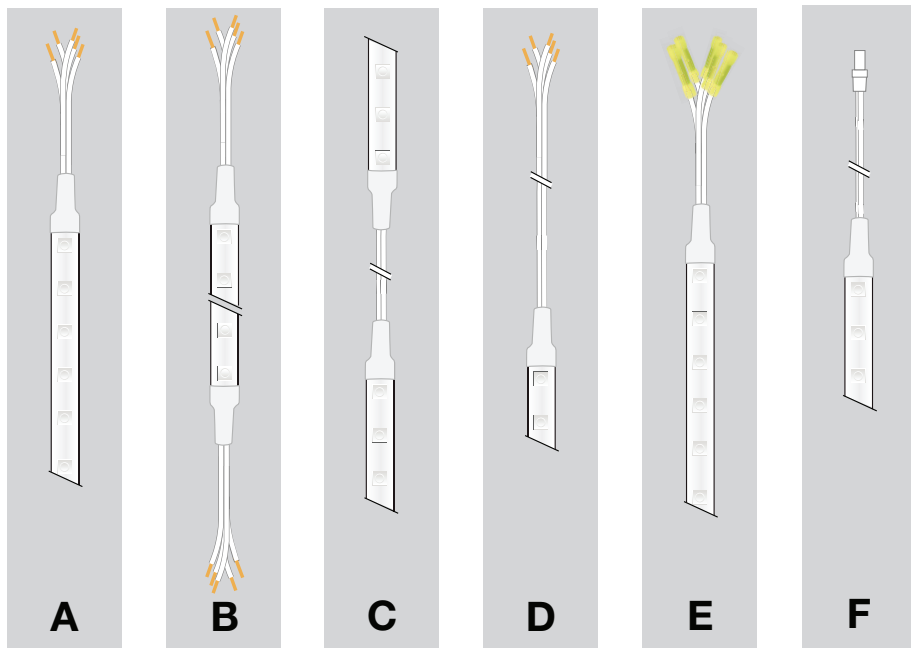
SEE PAGE 5 & 6 FOR  
POWER SUPPLIES  
& DMX CONTROLS

|                 |  |   |      |
|-----------------|--|---|------|
| sixteen5hundred | Project 21-12877-3 Date 6/25/2021<br>RGB/W   Saturated Color<br>Submitted By<br>16500, INC | Catalog Number<br>DL HO 44 O RGBW 24<br>Notes | Type |
|-----------------|--|---|------|



## DURATAPE™ HO OUTDOOR RGB+W

### Wiring Options



**A** 07UX3CBL1 (3-circuit RGB)  
07UX4CBL1 (4-circuit RGBW)  
Single lead wire prep. 24" Lead wire/dead end allows for connection to power at lead end and field trim of Duratape product at other end.

**B** 07UX3CBL2 (3-circuit RGB)  
07UX4CBL2 (4-circuit RGBW)  
Double ended lead wire prep. 24" lead wire at both ends.  
One end can be used for power connectivity while the other end can be used for a jumper cable to run to an additional length of Duratape. Caution: Pay attention to max run lengths and voltage drops from total lead/jumper wire lengths.

**C** 07UX3JMPCBL-XX (3-circuit RGB)  
07UX4JMPCBL-XX (4-circuit RGBW)  
Jumper cable (specified length)  
Jumper cables can be factory attached to Duratape to meet your specified installation requirements. Jumper lengths available as 1", 2", 3", 4", 6", 12". Add length number to end of part number. Caution: Pay attention to max run lengths and voltage drops from total lead/jumper wire lengths.

**D** 07UX3ADDCBL (3-circuit RGB)  
07UX4ADDCBL (4-circuit RGBW)  
12" Additional lead wire  
Purchased per foot and factory attached to specified run leads. Lead wire can be field cut to desired length.

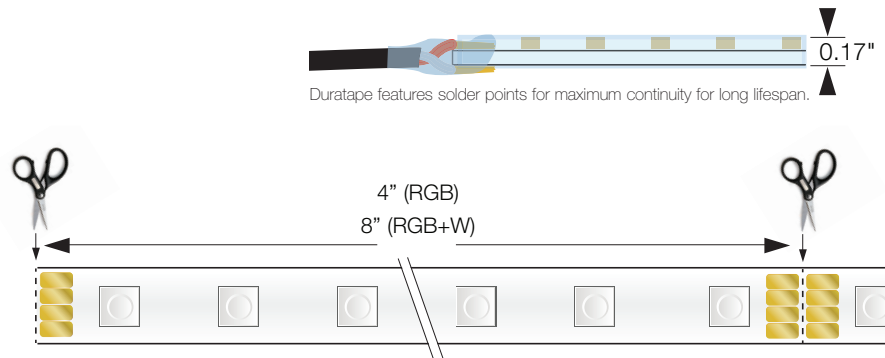
**E** 07UX3ADDCON (3-circuit RGB)  
07UX4ADDCON (4-circuit RGBW)  
Additional connectors. Lead wire connectors 2/ea per connection.

**F** 07UX3LICON (3-circuit RGB)  
07UX4LICON (4-circuit RGBW)  
24" lead wire with IP66 female connector. See mounting accessories for additional Minilink components.

### Field Cut Details

Duratape can be field cut to accommodate most installations, by cutting at the indicated field cut sections.

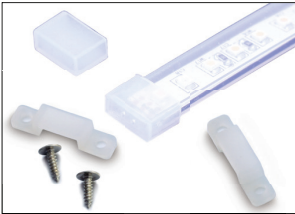
Caution! Field cutting should only be done before connection power.





DURATAPE™ HO  
OUTDOOR RGB+W

Mounting Accessories



**DL-HOEC-66**  
Silicone end cap for termination of IP66 tape.

**DL-SLEEVE-CLP-66**  
Sleeve mounting clips. Package of 10 each for 5 ft section.



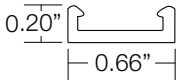
**DL-ALUM-U-6**  
Low profile aluminum U-Channel for linear run lengths, available in 6' lengths.  
1/2" ID, 5/8" OD, 1/4" H



**DL-ALUM-L-6**  
Low profile aluminum 1/2" x 1/2" L-Channel for linear run lengths. Duratape can be mounted at either 0° or 90° mounting positions. Available in 6' lengths.

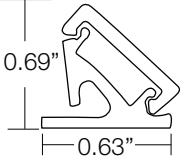


**DL-O-MCHAN-4**  
Mounting channel, sold in 4 foot lengths. Can be used with Duratape (no PVC sleeve) and outdoor Duratape (with PVC sleeve) for linear applications.

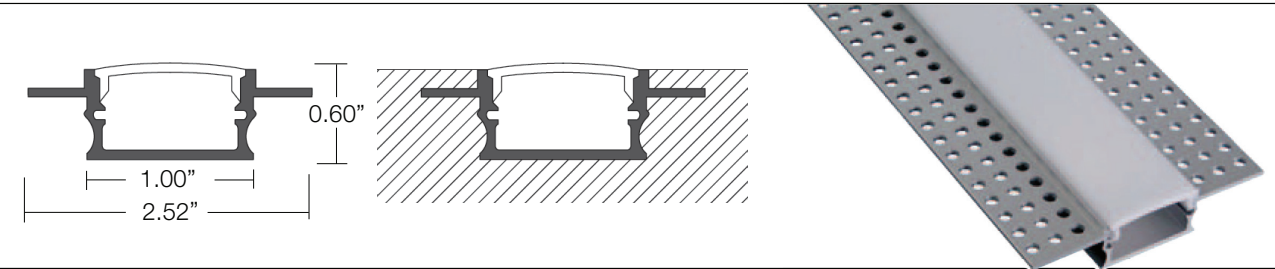
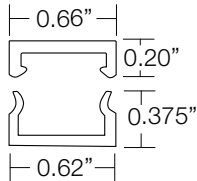


**DL-O-45-MCH-4**  
45° mounting base, sold in 4 foot lengths. Used with Duratape (no PVC sleeve) for 45° mounted linear applications.

**DL-O-45-CVR-4-C** (Clear)  
**DL-O-45-CVR-4-F10/F30/F60** (Frosted)  
45° mounting base cover, sold in 4 foot lengths.



**DL-O-2PC-C** (Clear)  
**DL-O-2PC-F10/F30/F60** (Frosted)  
Two-piece mounting tube; base (clear) with cover, sold in 4 foot lengths. Used with Duratape (no PVC sleeve) for linear applications. Clear or frosted at 3 diffusion levels, 10%, 30% or 60%.

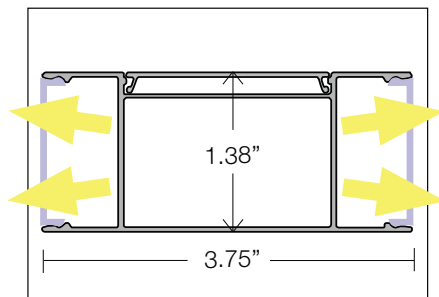


**PRINCG**  
Aluminum profile for installation flush in plasterboard. Complete with white lens. Available in 6' lengths.



# DURATAPE™ HO OUTDOOR RGB+W

## Profiles

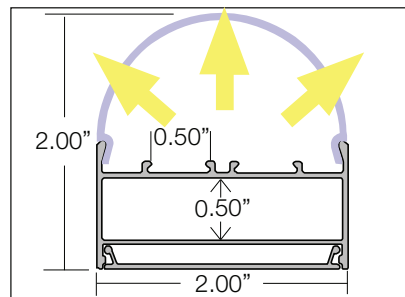


### PRDE

Aluminum channel with dual opal lens for dual tape 6' runs illuminating in opposite directions.

### PRDE-ECK

Set of two end caps.

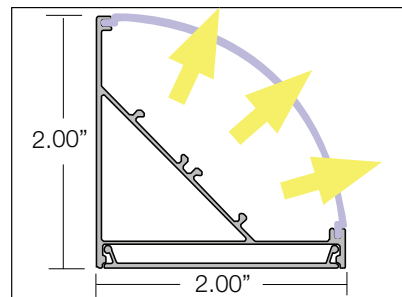


### PRDSAP

Aluminum channel with curved opal lens for dual tape 6' runs for unique lighting effects.

### PRDSAP-ECK

Set of two end caps.

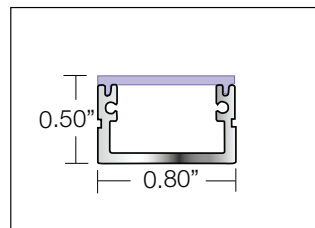
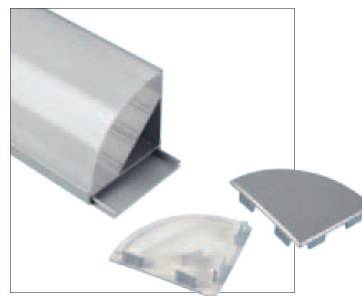
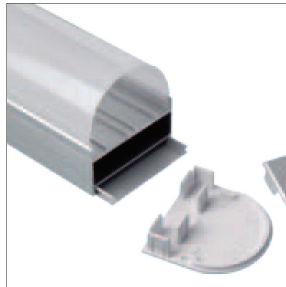
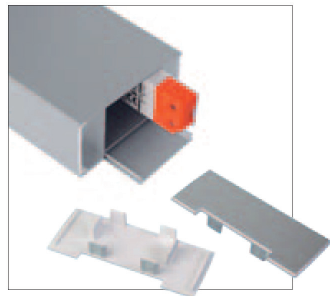


### PRDSAN

Aluminum channel with curved 6' lens for 45° angled dual tape run illumination.

### PRDSAN-ECK

Set of two end caps.



### PRAP66

Surface mount aluminum channel. Anodized aluminum rigid profile complete with white diffuser plastic cover. Suitable for Duratape IP66 installation applications. Available in 6' lengths.

### DL-AL-CHAN-66-LENS

Frosted lens, available in 6' lengths.

### DL-AL-CHAN-66-EC-1

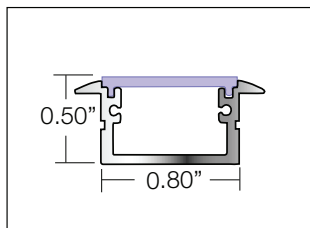
End cap with hole for interconnectivity.

### DL-AL-CHAN-66-EC-2

End cap with no hole for run length termination.

### DL-AL-CH-WOC-O

Mounting clip for outdoor aluminum channel.



### PRIN66

Flush mount aluminum channel. Anodized aluminum rigid profile complete with white diffuser plastic cover for flush mounting. Suitable for Duratape IP66 installation applications. Available in 6' lengths.

### DL-AL-CHAN-66-LENS

Frosted lens, available in 6' lengths.

### DL-AL-CHAN-66-EC-1

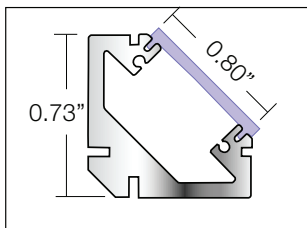
End cap with hole for interconnectivity.

### DL-AL-CHAN-66-EC-2

End cap with no hole for run length termination.

### DL-AL-CH-WOC-O

Mounting clip for outdoor aluminum channel.



### PRAN66

45° aluminum channel. Anodized aluminum rigid profile complete with white diffuser plastic cover for flush mounting. Suitable for Duratape IP66 installation applications. Available in 6' lengths.

### DL-AL-CHAN-66-LENS

Frosted lens, available in 6' lengths.

### DL-AL-CHAN-66-45EC-1

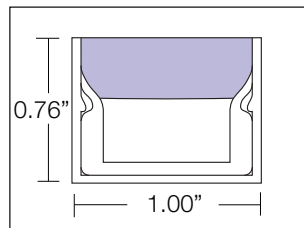
45° end cap with hole for interconnectivity.

### DL-AL-CHAN-66-45EC-2

45° end cap with no hole for run length termination.

### DL-AL-CH-45-C-O

Mounting clip for outdoor aluminum channel.



### PRINTC

Recessed aluminum channel for walk-over inground applications, includes frosted polycarbonate cover. Suitable for Duratape IP66 installation applications. Available in 6' lengths.

### DL-AL-CHAN-WOEC-1

End cap with hole for interconnectivity.

### DL-AL-CHAN-WOEC-2

End cap with no hole for run length termination.

### DL-AL-CH-WOC

Mounting clip for outdoor aluminum channel.



DURATAPE™ HO

OUTDOOR RGB+W

Power Supplies

| Cat No             | Type       | Voltage             | Wattage        | Listing | Dimensions             |
|--------------------|------------|---------------------|----------------|---------|------------------------|
| DEL-X-120-1-4-24-D | Electronic | 90-305V AC / 24V DC | 96W / 1X4A**   | cULus   | 12"W X 12"L 4"D*       |
| DEL-X-240-2-4-24-D |            | 90-305V AC / 24V DC | 192W / 2X4A**  | cULus   | 12"W X 12"L 4"D*       |
| DEL-X-320-3-4-24-D |            | 90-305V AC / 24V DC | 288W / 3x4A**  | cULus   | 12"W X 12"L 4"D*       |
| DEL-120-1-4-24-D   |            | 90-305V AC / 24V DC | 96W / 1X4A**   | UL/CE   | 2.67"W X 9.66"L 1.53"D |
| DMG-40-1-1.6-24-D  | Magnetic   | 120V AC / 24V DC    | 40W / 1X1.6A** | cETLus  | 2.00"W X 5.06"L 2.14"D |
| DMG-60-1-2.4-24-D  |            | 120V AC / 24V DC    | 60W / 1X2.4A** | cETLus  | 2.25"W X 6.55"L 2.55"D |
| DMG-120-1-4-24-D   |            | 120V AC / 24V DC    | 96W / 1X4A**   | cETLus  | 3.00"W X 9.80"L 3.00"D |
| DMG-192-2-4-24-D   |            | 120V AC / 24V DC    | 192W / 2X4A**  | cETLus  | 3.00"W X 9.80"L 3.00"D |

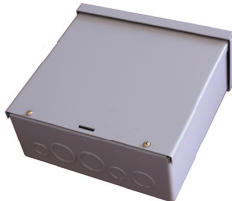
\* Dimensions include enclosure with mounting bracket

\*\* 4A maximum current protection for each secondary circuit

\*\*\* Constant voltage drivers 50HZ , voltage regulated with short circuit protection. operating temperature -40 C- 80° C



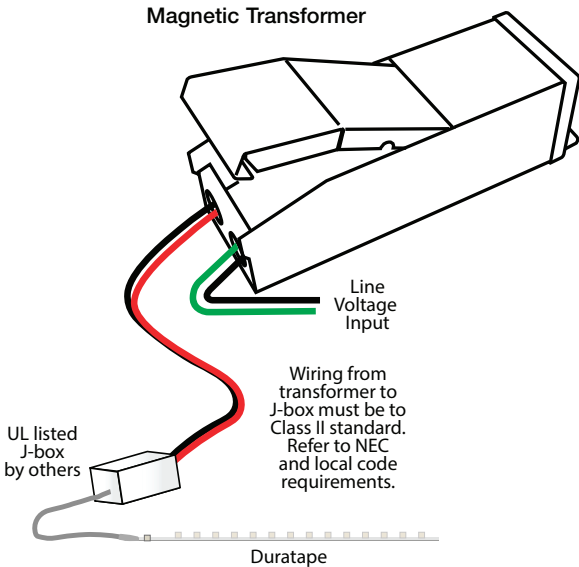
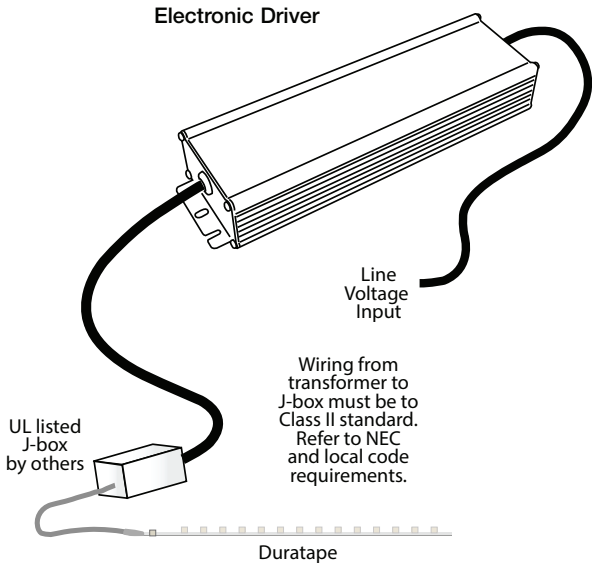
Electronic Driver



Electronic Driver  
in Enclosure



Magnetic  
Transformer



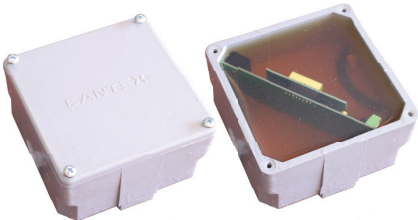


DURATAPE™ HO

OUTDOOR RGB+W

RGB Controllers

| Cat No     | Application | Voltage | Type                 | Listing | Dimensions               |
|------------|-------------|---------|----------------------|---------|--------------------------|
| ZXC-DM7-66 | Indoor      | 24V DC  | RGB DMX Controller   | cULus   | 4.25"W X 4.25"L X 2.25"D |
| ZKTPC-RGBW | Indoor      | 5V DC   | RGB+W DMX Controller | cULus   | 4.20"W X 5.75"H X 0.40"D |
| ZKC-DMXW   | Indoor      | 24V DC  | RGW+W DMX Interface  | cULus   | 6.60"L X 2.00"W X 0.87"D |



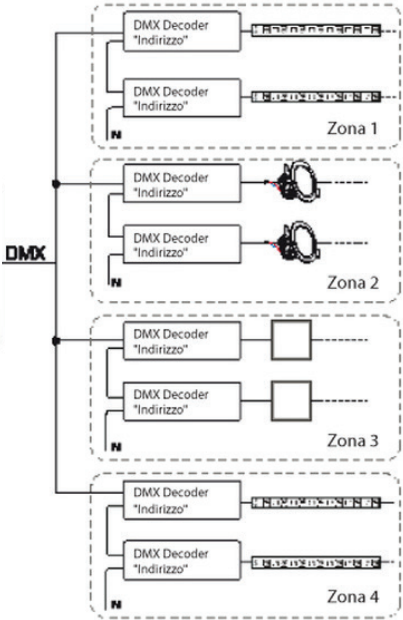
ZXC-DMZ-66



ZXC-DMXW



ZKTPC-RGBW  
RGB+W DMX  
Controller



System Layout  
Example Diagram

