

# sixteen5hundred **Spotlight**

## Mark Your Calendars:

### **Manufacturer Webinars:**

*Click the button below to Register!*

**Webinars**

- **BlackJack Lighting: 6/1/2021**  
**JackTrack Impact- and more BlackJack Lighting**
- **USAI Lighting: 6/22/2021**  
**Meet the LittleOnes**  
**Presented by: Danielle Myers**
- **SPI Lighting: 6/29/2021**  
**Whats New?**  
**Presented by: Kevin Handerson**



# L!ve Pop Up Event: 6.17.21

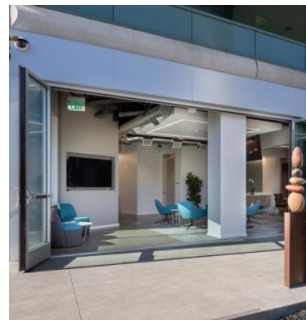
**Prudential Lighting- Jay Weiss & Jon Steele**

**Erco USA- Oliver Heller**

**Date | Thursday June 17th, 2021**

**Time | 4:30-7:30pm**

**Please Join Us - Open House- L!VE Product Displays**

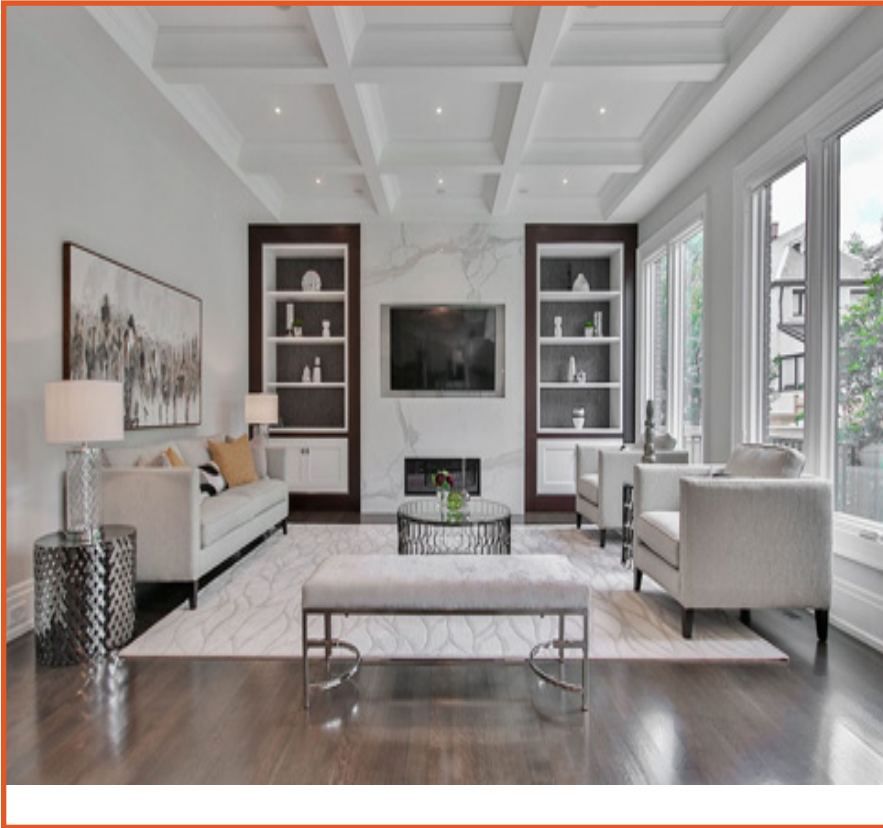


## ***Health & Safety Protocols***

- Masks Requested Please
- Masks & Hand Sanitizer Stations will be available on-site
- Bifold Patio Doors that create an Indoor-Outdoor Space, an abundance of Fresh Air
  - Patio Seating with Heaters
- Individually Boxed Appetizers & Beverages will be served.

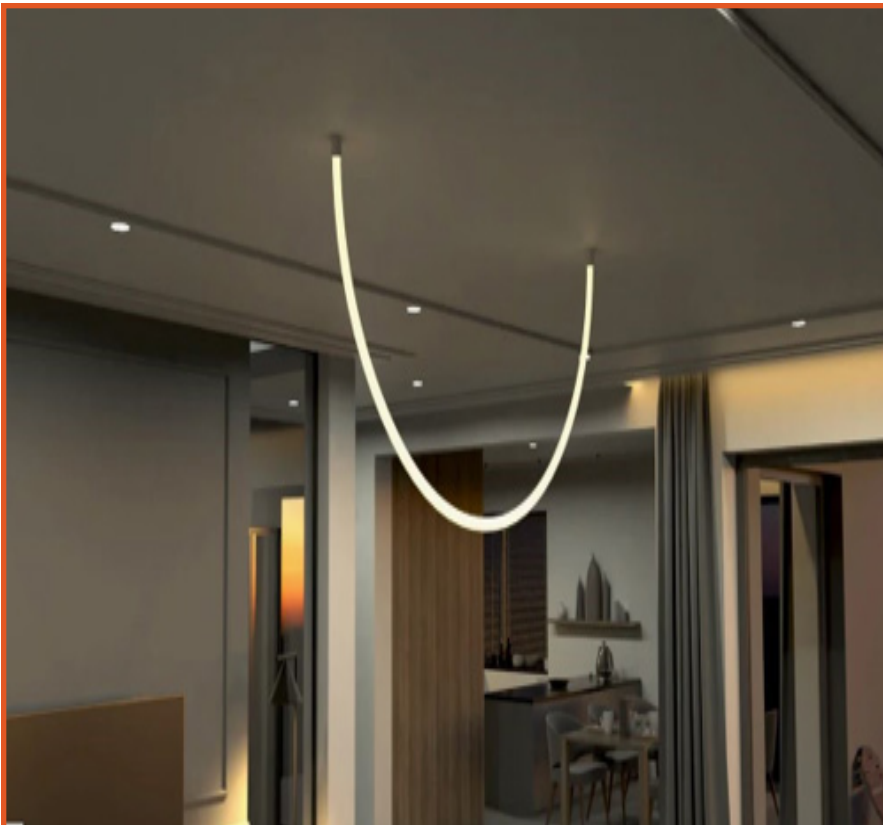
**Email [cmarcipan@16500.com](mailto:cmarcipan@16500.com) to RSVP**

# NEW Product Update:



## USAI LittleOnes

Who says TINY comes at the expense of performance? USAI Lighting is defying the norm and what is possible as they raise the bar in design and engineering with a new one-inch recessed fixture family, featuring powerful output, incredible low glare optics, and completely serviceable from below, these LittleOnes will knock your socks off. With a ceiling aperture of only 1" diameter for the round and 1.25" for the square these LITTLE ONES will amaze you with what they are capable of.



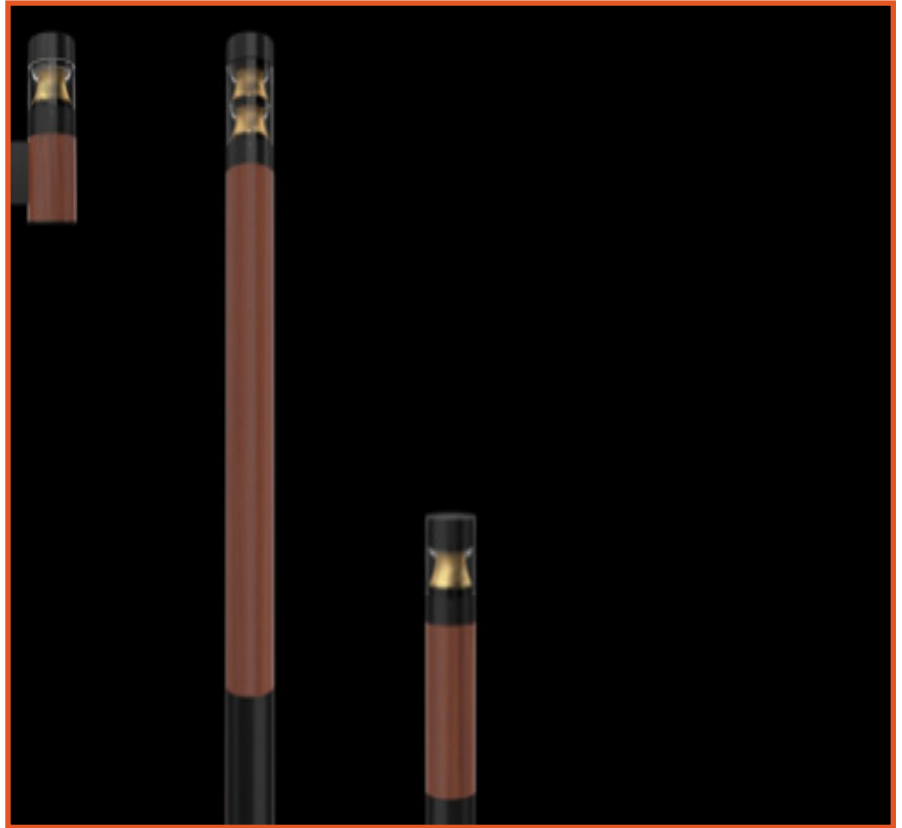
## Kelvix Vine

Unleash your creativity and discover the infinite possibilities of this highly flexible silicone fixture. Five mounting options allow you the freedom to create pendants, circles, arches, flush mounts, suspended mounts or free-form designs. Ideal for a myriad of hospitality environments both indoor and outdoor.

# NEW Product Update:

## Selux ELO Wood

ELO Wood is part of the most slender bollard/column family from Selux—ELO. At just 6" in diameter and with eight wood finish selections and countless options for the metal finish, ELO Wood is truly customizable. Perfect for parks, coastal areas, campuses, shopping centers and more, the integrated wood structure provides a natural look and superior wear-resistance. The family consists of bollard, column, and wall mount models with lumen packages up to 8,000lm. The unique optical approach provides effective vertical illumination, interesting aesthetics, and maintains visual comfort.



## Lithonia SPX

Looking for something visually interesting? Or a little more reserved? With SPX you get to choose. Introducing the fully luminous lay-in with multiple optic options, each of which is designed to match the personality of your space. Available in 1x4, 2x2 and 2x4 with five different optical film options the SPX raises the bar with LED panel technology



# NEW Product Update:



## **Bartco REAL81**

The REAL81 is a linear, direct/indirect LED luminaire for general lighting applications.

The 3" wide by 4-1/2" tall aluminum extrusion is fitted with 1/2" thick solid wood planks. The furniture grade wood cladding is available in five standard varieties with a hand applied natural finish. The REAL81 is available for cable or wall mounting and offered with a variety of dimming driver and light color options for added versatility."

Introducing **SHORT DIGITALS**, a new and fun way to learn about new products and win different prizes every month



[Click to Enter](#)



# Controls Insider:

## nLight AIR's Battery Powered Sensor (rCMSB):

The new and improved nLight wireless battery-powered ceiling mount sensor is perfect for retrofit or new construction projects. The rCMSB sensor now offers all of the features in our constantly powered sensors without the need for wires to install. Simply mount it to the ceiling, program with the mobile app, and you're done! Combining the ability to offer not only PIR motion sensing and daylight harvesting technology as our standard features, we now include our patented passive dual technology (PDT), all-in-one device. PDT combines both PIR and Microphonics to deliver a higher level of detection and reliability to see and hear occupants in the space. Get the reliability and functionality of a wireless solution in our battery powered

