

sixteen 5 hundred

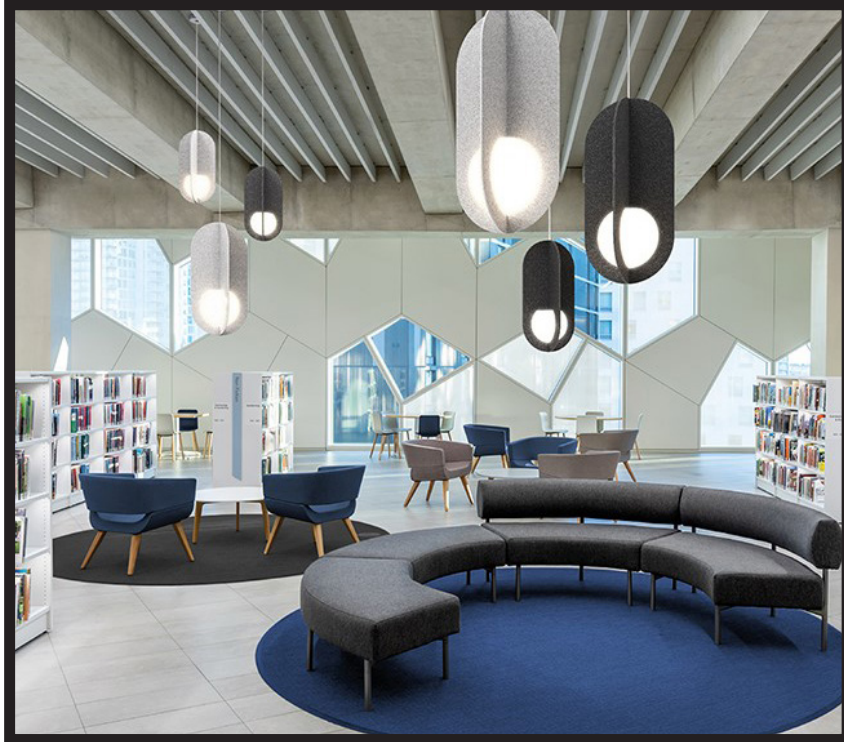
Sept/2020

PRODUCT UPDATES



APERTURE BY EUREKA

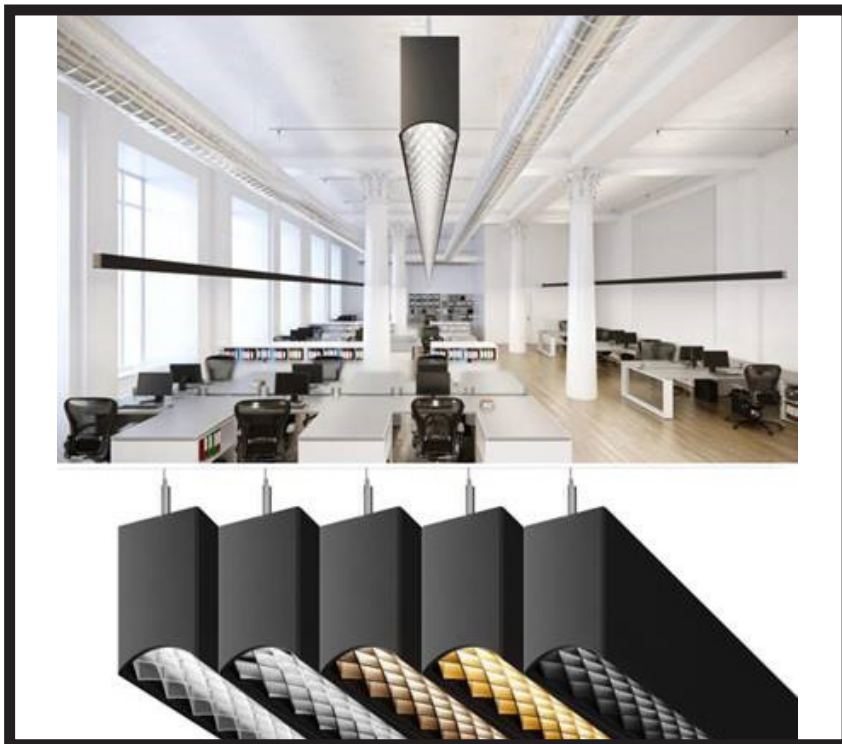
New Products



Quadrant by Eureka

Introducing Quadrant by Eureka. Rounded, interlocked felt fins absorb sound while a unique look brings light and visual energy to a space. An unlit version is also available.

- Sound-absorbing recycled PET felt shade
- Three sizes of lit and unlit versions: 23", 35" and 47" high
- Two standard colors: charcoal or silver gray

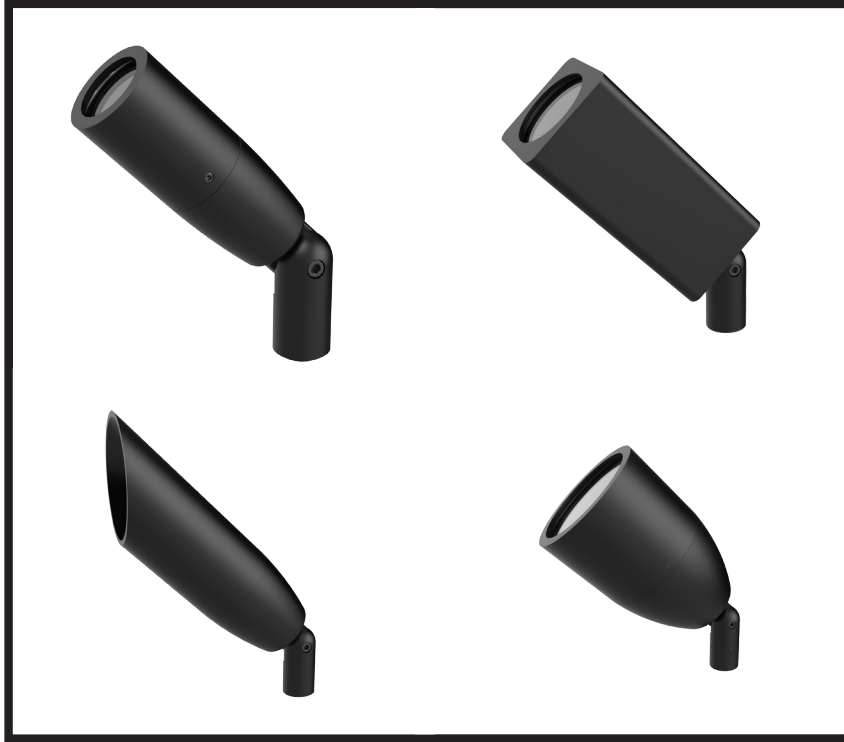


Le Louvre by Beta Calco

Le Louvre features a stunning three-dimensional diagonal louver structure that gives the profile a closed appearance when the light is switched off and an open appearance when the light source is on. Compared to basic diffuser-based downlight solutions, Le Louvre also has the advantage of offering improved visual comfort with a Unified Glare Rating (UGR) less than 9.

- Indirect batwing optics offered as standard
- Choose from five different louver finishes, and various housing finishes including wood grain options

New Products



Accent Lights by Hydrel

The Hydrel Accent family is now available in more distribution options, additional CCT, higher lumen outputs, and with integral drivers. The round accent family is made up of the Cedar, Aspen, Palm and Pine, use one fixture or a mixture of all four to bring your outdoor environment to life.

The square Alder has been upgraded with an IP66 rating, integral driver for 120V and more than 1100 lumens making it a great complement to the round accent families.

These fixtures are suitable for a variety of mounting applications from ground, wall, tree, sign or architectural accents.



nLight Enabled by A-Light

We are pleased to offer designers more flexibility in specifying A-Light's luminaires with the option to use nLight® AIR or nLight® Wired lighting control solutions. Enhance any space with a simple, scalable, and connected lighting system that provides both energy savings and increased configurability.

A-Light products with nLight® compatibility include: the entire Accolade D and Accolade series, as well as APEX3 and APEX5, Aerial, Align, and Angle. Using embedded controls in these luminaires allows them to digitally communicate with other nLight® enabled controls such as dimmers, switches, occupancy sensors, and photocontrols.

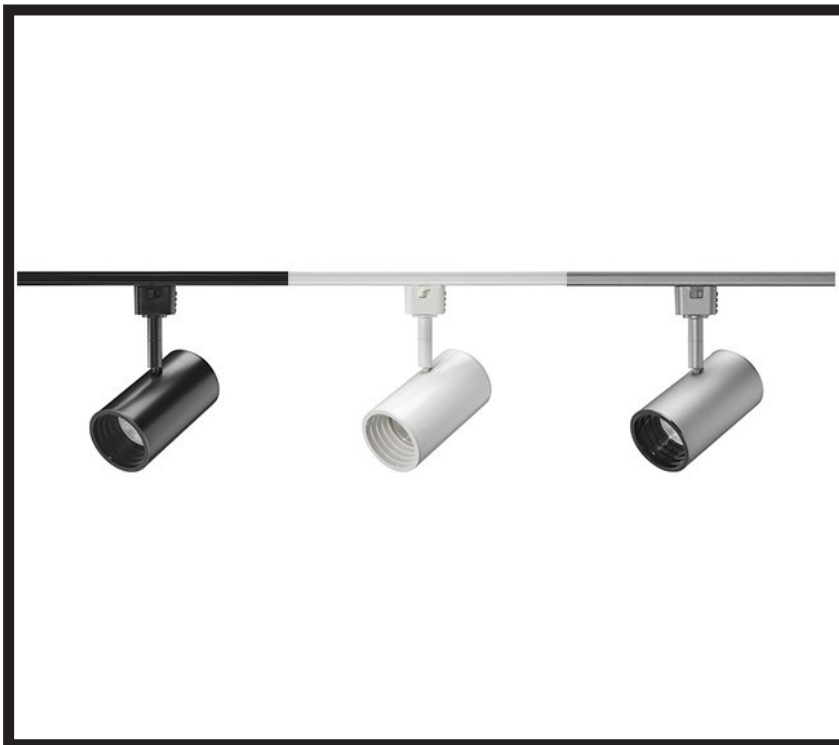
New Products



Floptix by Kelvix

Floptix combines flexible LED and architectural optics into a versatile system with a multitude of indoor and outdoor applications.

- Factory built to length
- Multiple beam options including 20 degree, 30 degree, 40 degree, 50 degree 20x40 degree and 110x70 degree asymmetric
- Flexible
- IP67 rated

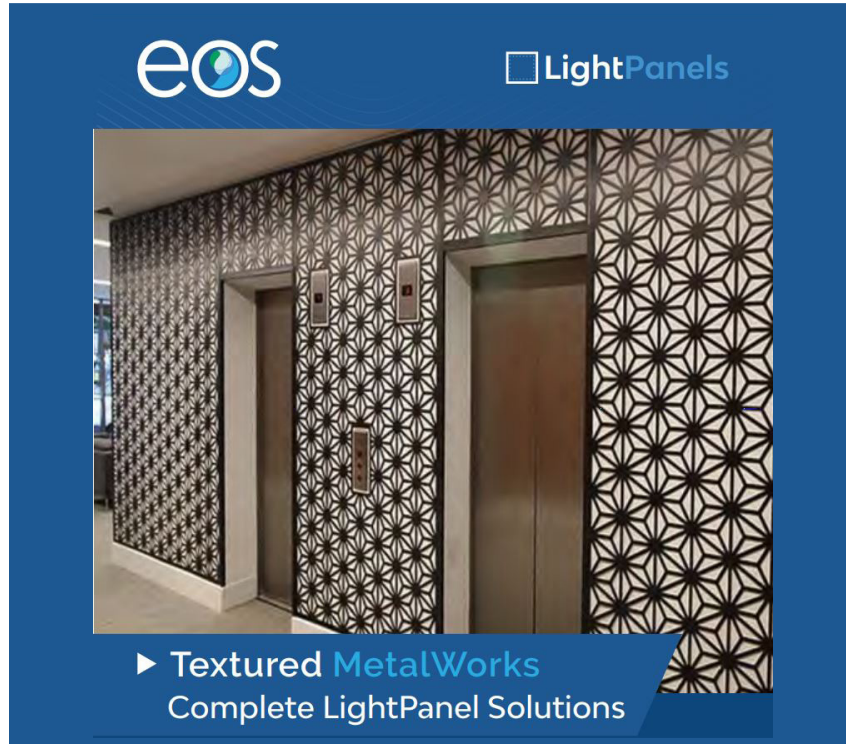


R606L by Juno

Sporting a timeless cylinder aesthetic, the Juno R606L LED track fixture further expands the economical Trac-Lites LED track fixture offering. But don't be fooled by its compact form and simple good looks – the R606L features powerful performance, providing output upwards of 1300 lumens while consuming only 13 watts, with a 50,000 hour operating life. If you love the Trac-Lites R605L, but were looking for more light, the new R606L is for you!

- Deep source regression for superior glare control
- Factory or field-installed accessory holder accommodates one 2" accessory

New Products



MetalWorks by EOS

LightPanel MetalWorks are the latest in a series of complete EOS solutions that are made-to-order at the factory and arrive at a job site ready to install, with no partial assembly required.

MetalWorks are LED backlit, real metal texture lighting solutions. Choose one of dozens of seamless, decorative stock patterns, or contact the factory with your own design for a completely custom look. Standard metal finishes include black or white powder coating, or unpainted brushed metal. Non-standard powder coat finishes can also be arranged to match your environment. LED backlighting use EOS LightPanel MetalWorks solutions either indoors or outdoors for flat wall, ceiling or overhang applications.



Acuity Brands Virtual Trade Show

Acuity Brands is hosting our first-ever virtual trade show on October 7th and 8th from 9 am - 6 pm EST! This will be an online, interactive event showcasing top Acuity Brands Products.

At this event you will be able to:

- Attend live webinars, including courses for CEU credit
- Chat directly with our product managers and sales team
- Discover the newest products and technologies that we have to offer